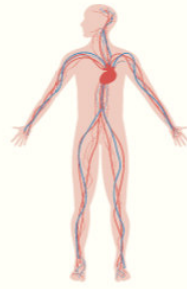
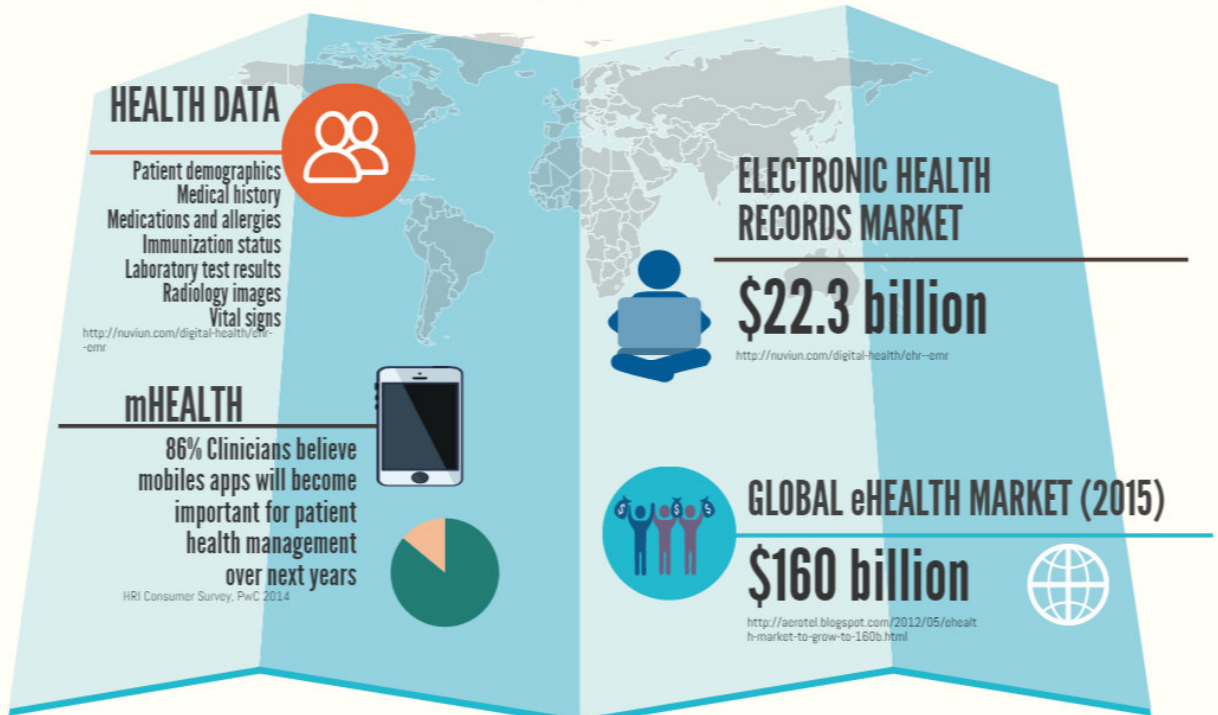


eHealth



THE LEADING ROLE OF ICT IN HEALTHCARE



Improving Quality of Healthcare by using IT-supported Decision Support Systems at the Point of Care

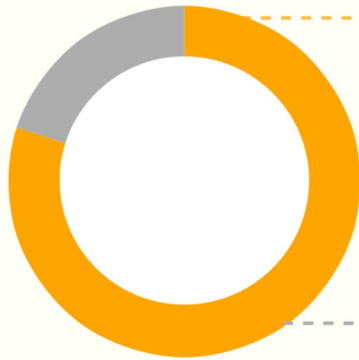
J Car et al. The Impact of eHealth on the Quality & Safety of Healthcare. A Systemic Overview & Synthesis of the Literature, 2008

Demand for eHealth will substantially grow due to demographic factors and technological advances



M Pavel et al. Technology in Support of Successful Aging
The BRIDGE, 2009.

HEALTH AND WELLBEING



CONSUMERS

- 80% of consumers say an important benefit of wearables is its potential to make healthcare more convenient

The Wearable Future, PwC

NOTABLE HEALTH DATA DEVICES

- Glucose test system
- Breathing Frequency Monitor
- Noninvasive blood pressure measurement system
- Tinnitus masker
- Electronic thermometer

Mobile Medical Applications, FDA, 2015



STAKEHOLDERS in eHealth



delivery of efficient and cost-effective healthcare

customised health insurance products



ICT



eGovernment and public health initiatives



empowerment of people in respect to health management

CHALLENGES

USABILITY AND HUMAN-MACHINE INTERACTION



PRIVACY AND SECURITY OF HEALTH DATA



HEALTH DATA STANDARDS



LEGAL ISSUES



IT-GOVERNANCE OF eHEALTH



FUTURE OF eHEALTH



TREND 1

quicker transfer of latest research findings into clinical care

F Shortliffe et al. Biomedical Informatics, Springer, Verlag London, 2014.



TREND 2

eHealth services are personalised for individuals

F Shortliffe et al. Biomedical Informatics, Springer, Verlag London, 2014.



TREND 3

eLearning will radically transform healthcare education

Rasmussen et al., Online eLearning for undergraduates in health professions, Journal of Global Health, 2014.



TREND 4

big data in health are massive, heterogeneous & interconnected

F Shortliffe et al. Biomedical Informatics, Springer, Verlag London, 2014.

FOR MORE INFO, VISIT:

Global eHealth Unit
www.imperial.ac.uk/cpd/ehealth
Twitter: @eHealthImperial

A PROJECT BY:

Imperial College
London