

**Safety, Health and
Environment Leadership Team
(SHELTT)**

24th April 2015

Denis Murphy (ICL)

Agenda

- 1) Attendance and apologies
- 2) Agreement of minutes for March meeting
- 3) ICL Safety Champion Training & DAB Templates
- 4) Behavioural Safety Training & Occupational Health – Updates
- 5) Draft Vibration Policy for SHELT
- 6) Feedback for Noise and Dust policies presented in March
- 7) Contractors Monthly Statistics
- 8) Lessons Learnt – Cofely Electrical Near Miss (SKZZ1401)
- 9) AOB
- 10) Next Meeting

Attendance and Apologies

- New Attendees – Introductions
 - Jon Bidlake-Corser – Cofely**
 - John Costen – T Clarke**
 - Paul Campbell – Kier**
 - Samantha Booth – Logan Construction**
- Apologies received from:
 - Mike Graystone – Skanska**
 - Phil Winsor – Quest Interiors**
 - Ian Seabrook – Laing O’Rourke**
 - Surrinder Johal – ICL**
 - Stephen Hughes – ICL**
 - Sara Muir – ICL**
 - Lawrence Hooker – LXES**
 - Shauna Parke – Kier**

Agree Minutes from March meeting

- Can we confirm that the minutes from the previous meeting on 27th March 2015, can be agreed?

ICL Safety Champion Training & DAB Templates

- ICL Safety Champion nominations, as requested at the March meeting?
- Templates for DAB's – this will help in providing further information in readiness for ICL supervisor training roll out during 2015 – Any further updates or examples from other contractors?

Behavioural Safety Training and Occupational Health – Updates

- Update on behavioural safety statements – any outstanding?
- Update on occupational health policy statements – any outstanding?
- Occupational Health Schemes Update?



Draft Vibration Policy for SHEL

- Discuss draft
- Draft to be put onto screen

Draft Vibration Policy for SHELТ

- HAVi Monitor - £59.95 each



Vibration magnitude
set by operator

Trigger time and
vibration magnitude
automatically
calculate HSE points

Accurate trigger
time displayed



Units retro fitted to
any tool with cable
ties or velcro strap
supplied in under
10 seconds

Indicator light flashes
amber at 100 points
and red at 400 points

Draft Vibration Policy for SHELTL

- HAVi Manager – Entry Level £155 (1 x monitor), Basic Level £545 (6 x monitor), Standard Level £1065 (12 x monitor) and Premium Level £2090 (24 monitor).
- HAVi Manager is a simple solution for assisting health and safety managers in achieving compliance with the Control of Vibration at Work Regulations 2005 and the EU Physical Agents (Vibration) Directive 2002/44/EC.
- HAVi Manager packs contain:
 - HAVi(s)
 - Heavy Duty Case(s)
 - HAVi Manager
 - Tool Box Talk Presenter
 - Safety Card(s)
 - Educational Poster Pack(s)

HAVi Manager Pack - **Entry** Level



x1 HAVi Unit



x1 HAVi Manager



x1 HAVi HD Case



x1 Log Book



x1 Poster Pack



x1 Safety Card



x1 HAVi Presenter

Feedback for Noise and Dust policies presented in March

- Any feedback?
- When agreed, new policies will be issued to SHELTS
June 2015.

Contractor's Monthly Statistics

ICL ESTATES PROJECTS SHE REPORT - MARCH 2015

Month AFR
1.43

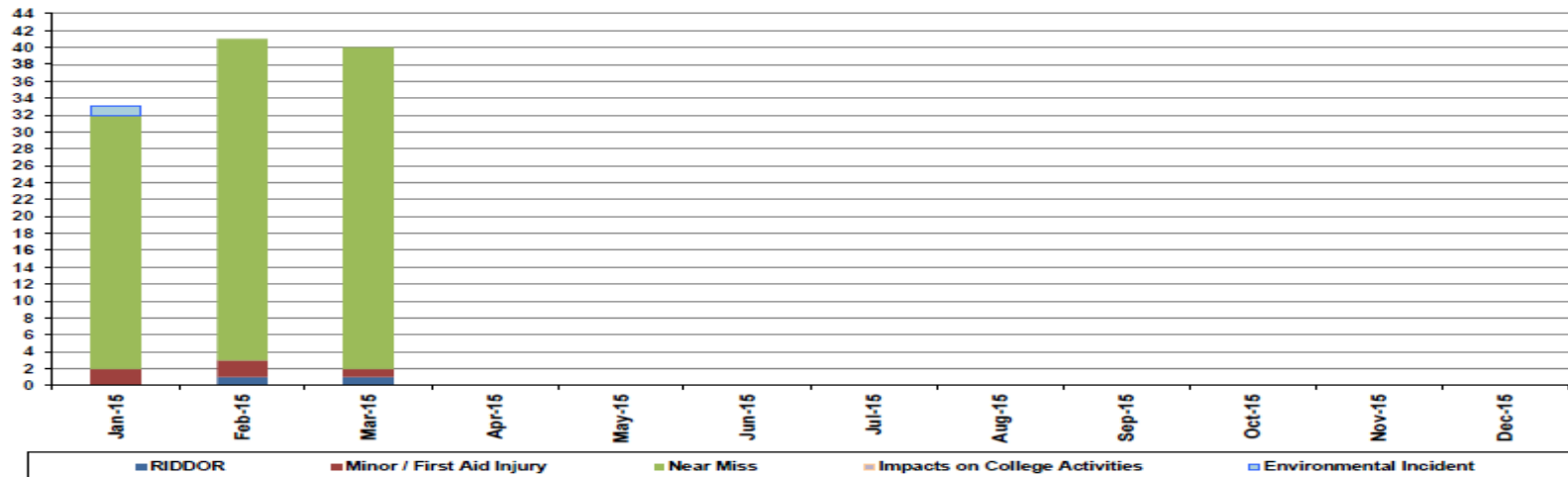
YTD AFR
0.99

Hours Worked for Month
69,773

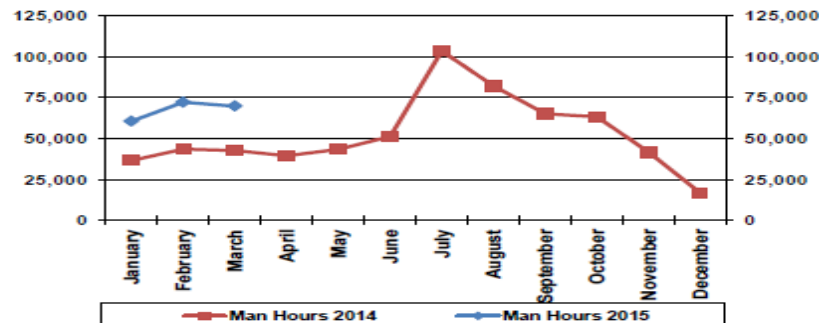
Hours Worked YTD - 2015
202,470

Lost Time (Days)	
Month Total	46
YTD Total	49

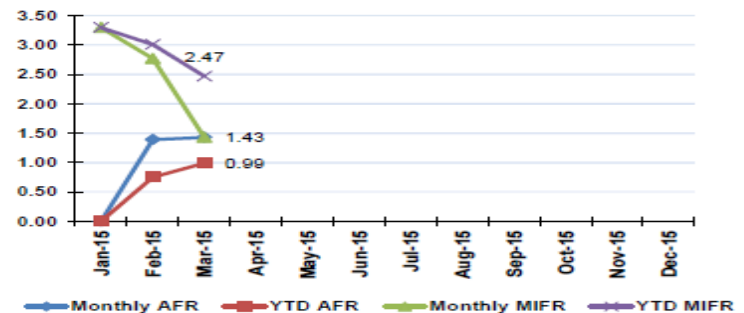
ACCIDENTS, NEAR MISSES, COLLEGE IMPACTS & ENVIRONMENTAL INCIDENTS - 2015



MAN HOURS 2014 v 2015



AFR / MIFR - MONTHLY & YEAR TO DATE - 2015



Contractor's Monthly Statistics – March 2015

- 10 no. inspections completed during March 2015 (8 GREEN, 1 AMBER and 1 RED). The RED report was reported on AMP Phase 2 (MENG1101B) due to working at height issues and compromise of the fire compartmentation system.
- 69,773 hours were worked on the projects during the month.
- The AFR for 2015 is currently 0.99.
- The last RIDDOR reportable accident occurred on 10th March 2015.
- The MIFR for 2015 is 2.47.
- 1 no. minor accidents reported for March (5 no. to date in 2015).
- A total of 38 near misses were recorded during the month of March. Housekeeping and access issues were the main issues raised by operatives via their relevant near miss reporting systems.

Construction Statistics 2013/14

STATISTICS IN PERSPECTIVE: CONSTRUCTION FATALITIES

CONSTRUCTION
ACCOUNTS
FOR ONLY ABOUT
5% OF EMPLOYEES
IN BRITAIN...



... BUT IS RESPONSIBLE
FOR 22% OF
FATAL
INJURIES

1 IN 3
FATAL SLIP, TRIP OR FALLS
INVOLVES
A CONSTRUCTION WORKER



15%
OF ALL SLIP, TRIP
AND FALL DEATHS ARE
FROM **ROOFERS** ALONE



36,000

NEW CASES OF
CONSTRUCTION
WORK-RELATED
ILL HEALTH
PER YEAR



CANCER CASES
ARISE EACH YEAR
AS A RESULT OF
PAST EXPOSURES
IN CONSTRUCTION

- 42 construction workers were fatally injured in 2013/2014 compared to 39 in 2012/2013. This makes construction the worst industry in the UK for worker fatalities.
- An estimated 2.3 million working days were lost in 2013/14, 1.7 million due to ill health and 592,000 due to workplace injury, making a total of 1.1 days lost per worker.
- Injuries and new cases of ill health resulting largely from current working conditions in construction cost society over £1.1 billion a year.

LFS – Labour Force Survey

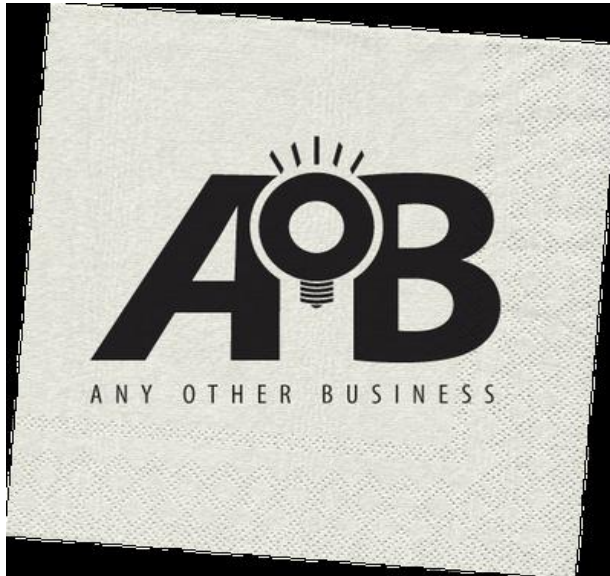
Source – www.hse.gov.uk/statistics/industry/construction/

Lessons Learnt Presentations

- Cofely Near Miss. SKZZ1401-Blackett & Huxley Infrastructure Works
- Any other presentations or knowledge sharing?



Any Other Business (AOB)



Any other business

I would like to say something

If that's all right

That sounds good

That's probably about it

Anybody got anything else they
want to raise before we wrap up?

Next Meeting

- Next meeting will be on Friday 29th May 2015 at 10:00am.
- Venue: LT140, Huxley Building, South Kensington Campus.