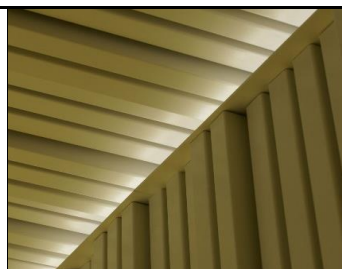


<b>ARCHITECTURAL STANDARDS</b>	Wall and Ceiling Panels
<b>PRODUCT DATA SHEET</b>	
K13 Rigid Sheet Panelling	<i>K13.130 Acoustic Linings</i>
K40 Suspended Ceilings	<i>K40 (Demountable) Suspended Ceilings</i>

<b>PREFERRED SUPPLIER INFORMATION</b>	
NBS REFERENCE K13/130 or K40	
<b>MANUFACTURER:</b>	<b>GUSTAFS Scandinavia AB, Gustafs, Sweden</b>
Address	LSA Projects Ltd, The Barn White Horse Lane CM8 2BU
Tel	01376 501199
E-mail	<a href="mailto:richard@LSAProjects.co.uk">richard@LSAProjects.co.uk</a>
Website:	<a href="http://www.LSAProjects.co.uk">www.LSAProjects.co.uk</a>
Supplier: Contact:	Richard Quieros



<b>PRODUCT DESCRIPTION</b>	
ICL APPROVED SPECIFICATION	
<b>Range:</b>	Gustafs Linear System for walls and ceilings
<b>Product Code</b>	GLS
<b>Application:</b>	Acoustic lining system (Class D/B Without/With Acoustic Fleece)
<b>Material</b>	Gypsum Particleboard (BF) Core with Real Wood, Gemini or RAL Painted Finish
<b>Size</b>	28/34/44mm high x 38mm wide x 2400/2900mm Long (or bespoke)
<b>Other</b>	Gap between ribs must be specified (12mm / 50mm c/c is standard)
<b>Environmental</b>	FSC for Standard Veneers otherwise sustainably sourced
<b>Recycling</b>	100% Recyclable
<b>Guarantees</b>	10 Year Guarantee on manufactured parts
<b>Production</b>	At Gustafs Factory in Borlange Sweden

<b>TYPICAL NBS SPECIFICATION</b>	
<b>K13 / K40</b>	Rigid Linings / Suspended Ceilings
<b>Standard</b>	ICL Approved Standard
<b>Range</b>	Gustafs Linear System for walls and ceilings
<b>Manufacturer</b>	GUSTAFS Scandinavia AB, Gustafs, Sweden
<b>Standard</b>	
<b>Product Reference</b>	GLS
<b>Type</b>	GLS Wall / Ceiling
<b>Appearance</b>	Veneer / Finish (Veneer species, Gemini style, RAL Painted or Laminate etc)
<b>Pitch</b>	Gap between ribs in mm
<b>Direction of Veneer</b>	Always on length of panel
<b>Panel Size</b>	28/34/44mm high by 38mm wide x 2400/2900mm long (or bespoke)
<b>Support</b>	CAPAX Base-W and U-FIX Grid System
<b>Fire safety</b>	Euroclass B-s1,d0
<b>Warranty</b>	10 years
<b>Material /Finish</b>	Gypsum Particleboard (BF) Core with Real Wood, Gemini or RAL Painted Finish
<b>Recycling issues</b>	None
<b>Enironmental issues - emits volatile gases?</b>	None
<b>Whole life costing?</b>	The suggested lifespan of Gustafs panels is 30+ years
<b>Source</b>	Gustafs' Lifspan statement and historical installations. Available from LSA Projects.
<b>Maintenance issues</b>	Maintenance engineers should be aware of any water or heat damage to ribs and substructure
<b>Cleanability</b>	Dusted with a dry mop or vacuumed, stains can be removed with a damp cloth.