



IMPERIAL

**White City
Campus Venues**

January 2025

Imperial College London

[Imperial.ac.uk](https://www.imperial.ac.uk)



Contents:

North site

Sir Michael Uren Hub	1
I-HUB (Translation and Innovation Hub)	3
Student Hub and Collabor-88	5
Brickfields Hall	6

South site

The Invention Rooms	7
Scale Space	9

12th Floor Seminar Rooms, 86 Wood Lane, W12 0BZ

A 3D virtual tour of Sir Michael Uren building can be found [here](#).

The Sir Michael Uren Hub spaces on 12th floor are shared by Medicine (medroomsandcat@imperial.ac.uk) and Bioengineering (bg-roombookings@imperial.ac.uk). Depending on which day you want to book for, you will need to contact the correct department (as laid out below) to check availability.**

1204 and 1205 can also be used as a boardroom or U shape style.

Room	Type	Capacity	Department / Days
WCMUH 1202*	Lecture	60	Monday and Tuesday all day/ Wednesdays AM (Bioengineering)
WCMUH 1203*	Lecture	60	
WCMUH 1204	Lecture	15	Thursday and Friday all day/ Wednesdays PM (Medicine)
WCMUH 1205	Lecture	15	

* These rooms can be used as two separate spaces or one large space (where 120 can use the space as one). Please note, these rooms are used for teaching so availability is dependent on student timetables.

** Please see page 9 for catering and AV requirements.



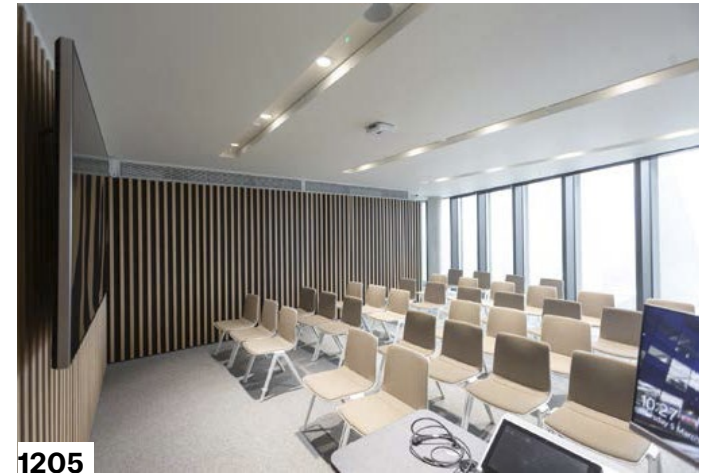
Sir Michael Uren Hub - 12th Floor Seminar Rooms



1202/1203



1202/1203



1205



1204



1205

North Site

I-HUB (Translation and Innovation Hub)

84 Wood Lane, W12 0BZ

Mezzanine level

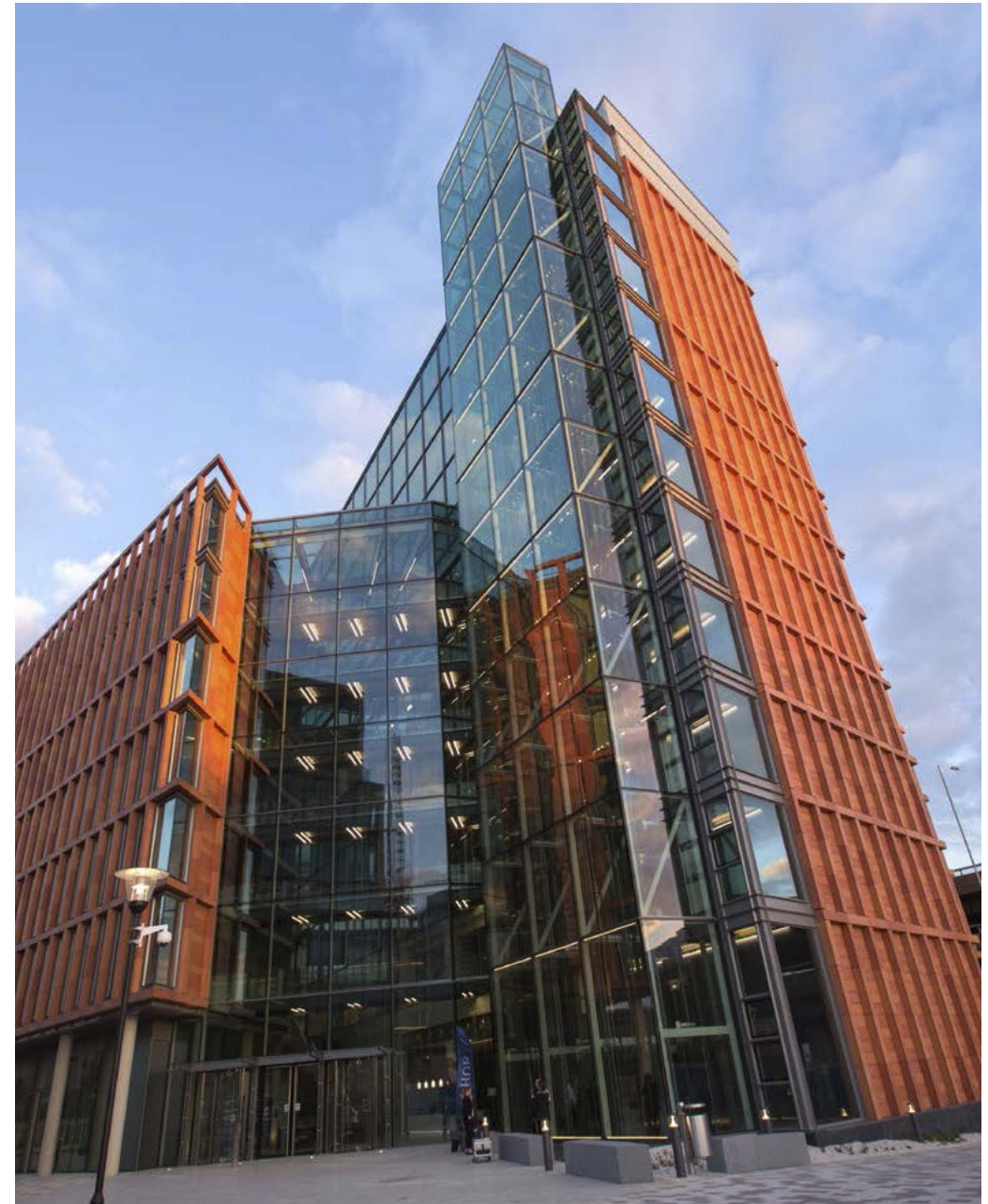
Room	Capacity	Hourly Cost
CR1	20-25	£40 +VAT
CR2	25-30	£40 +VAT
CR1/CR2	50 at tables 60 theatre-style 100 standing	£80 +VAT

Ground floor level

Room	Capacity	Hourly Cost
M1/M3/M4/M5/M6	4-6	£20 +VAT
M2	10-12	£25 +VAT

We also have the Atrium and Café space which can be booked for events. A 3D virtual tour showing the these areas of I-HUB can be found [here](#).

Please contact the Front of House team at foh_tih@imperial.ac.uk to book or if you have any questions.



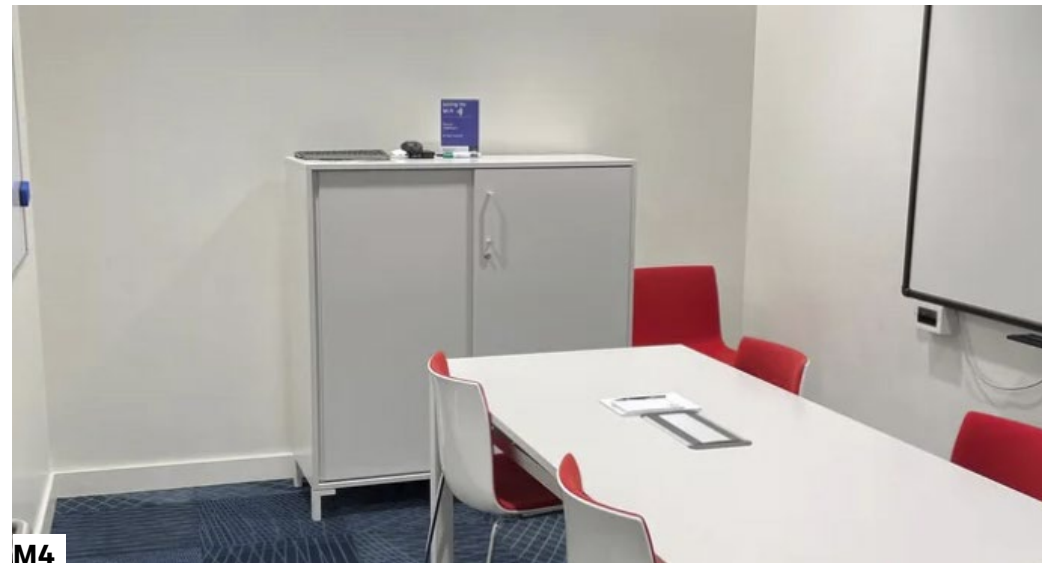
Translation and Innovation Hub (I-HUB)



CR1/CR2



M2



M4

Student Hub and Collabor-88

Student Hub, 86 Wood Lane, W12 0BZ
Collabor-88, 88 Wood Lane, W12 0BZ

Meeting rooms in the Student Hub (Sir Michael Uren Hub - Nose Cone) and Collabor-88 are bookable for student meetings and student services related activities.

Staff can book these spaces through Planon/Outlook.

Students can book these rooms by contacting the Student Hub at White City. studenthub@imperial.ac.uk

Name	Type	Capacity
WCMUH G G17	Meeting room	4
WCMUH G G18	Meeting room	6
WCMUH G G19	Meeting room	2
WC88 G G02A	Flat space/Meeting room	15 seated or 29 standing
WC88 G G02A joined with WC88 G G02*	Flat space/Meeting room	32 seated or 63 standing

* Due to access restrictions, WC88 G G02 is not bookable separately. If you wish to include G02 in your booking (along with G02A), please contact the Student Hub at White City studenthub@imperial.ac.uk.



© Google 2025

Shinfield Street, W12 0HN

Brickfields Hall capacity is 50–60 maximum – please contact GradPad reception team to discuss layouts.

There is no charge for internal use of Brickfields Hall, but as a community space priority will be given to community bookings.

Information about booking and amenities can be found [here](#).



Contact GradPad reception team for enquiries at reception.woodlane@upp-ltd.com

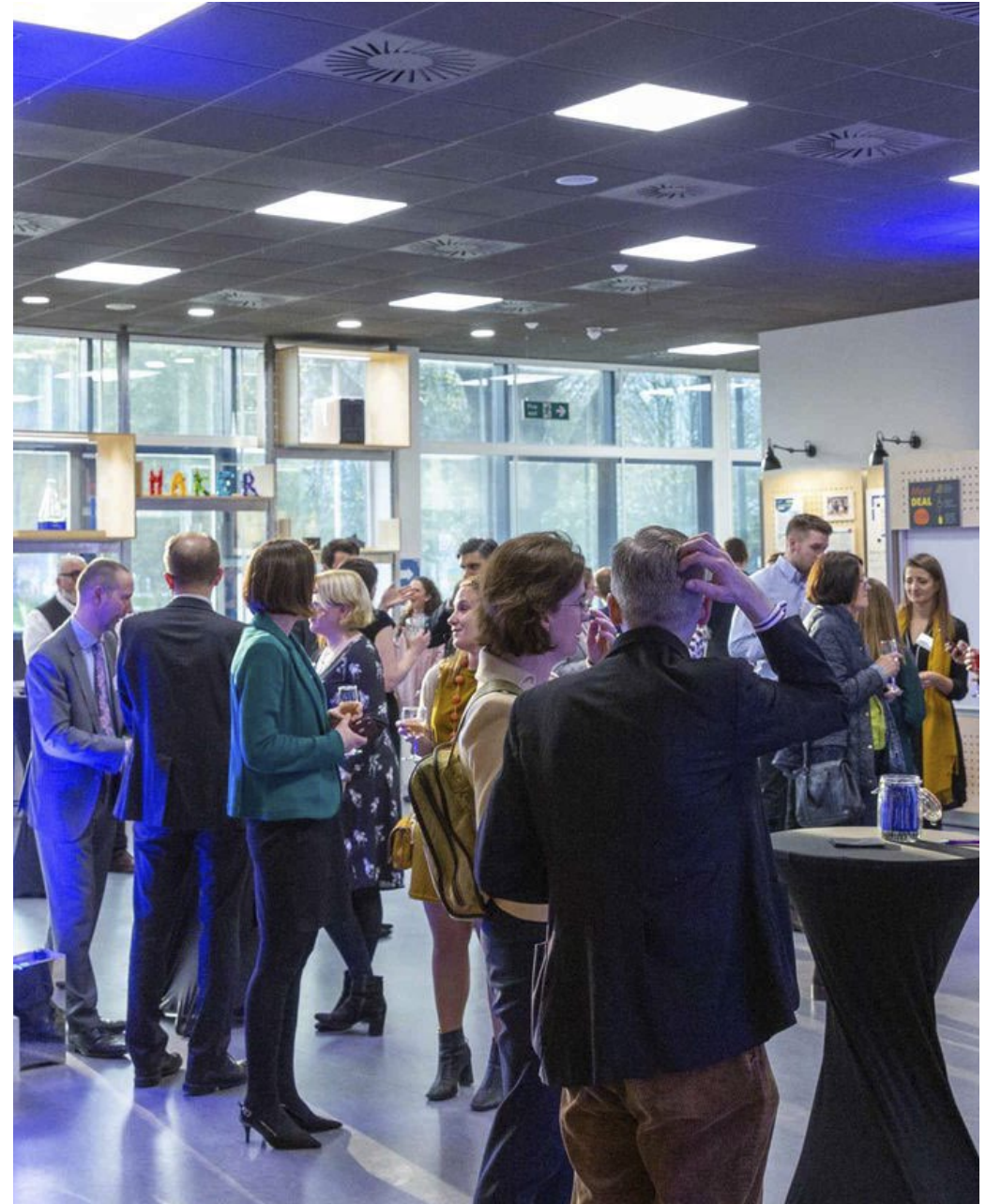
68 Wood Lane, W12 7TA

A 3D virtual tour of The Invention Rooms meeting spaces can be found [here](#).

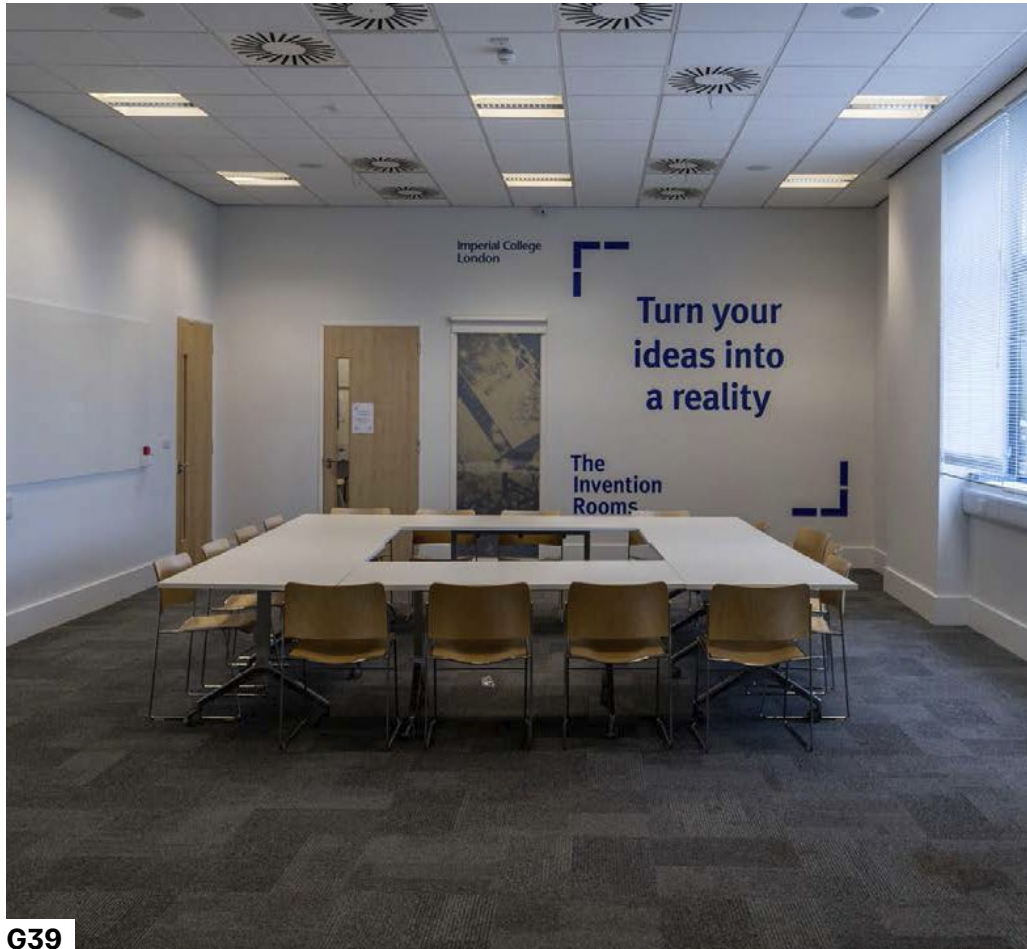
Please note that priority for booking these rooms is given to community bookings.

Room	Type	Capacity
Main event space (G41)	All standing	120
	Seats only (seminar)	90
	Cabaret	50
Large meeting room (G39)	Lecture	50
	Boardroom	20
	Cabaret	30

For enquiries, please contact theinventionrooms@imperial.ac.uk



The Invention Rooms



58 Wood Lane, W12 7RZ

Scale Space offers a number of premium event spaces ideal for a variety of event styles, from large conferences and formal dinners to board meetings and team socials. Each space comes equipped with state-of-the-art technology, AV support, flexible catering options, and a dedicated events team to ensure everything runs seamlessly.

Click [here](#) to view the Scale Space Events & Facilities brochure.

Room type	Room name	Capacity
Event Space	The Arena	150*
	The Stadium	120*
	The Terrace	70*
	The Collaboration Room	45*
	The Pitch	35*
Recording Facility	Recording Space	4
	Pod Space	1
Other	Sport Space	50

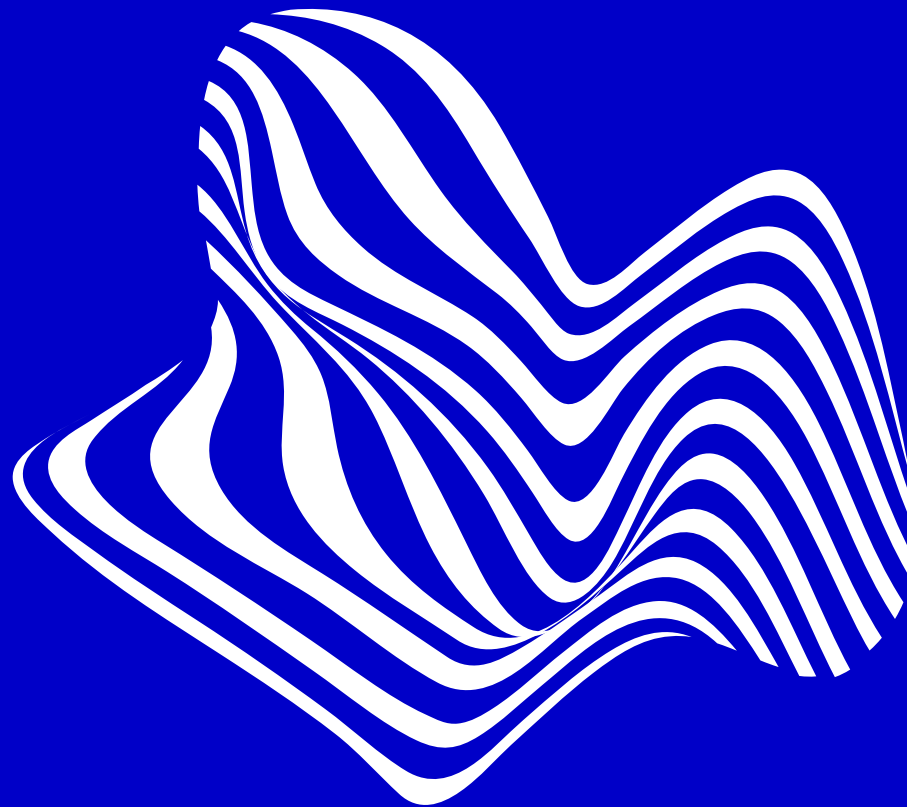
*subject to the desired layout of the room

For all event requests, please contact the Scale Space events team at events@scalespace.co.uk



Scale Space





If you would like to book catering and/or AV for your event at White City Campus, please contact Kishan Simon, Internal Events Coordinator (k.simon@imperial.ac.uk).
