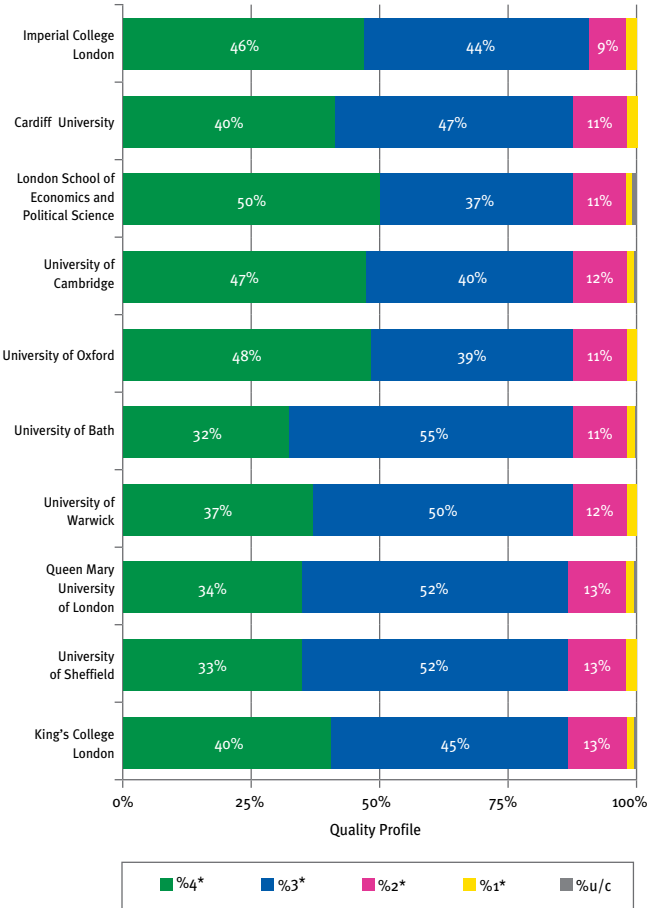


Statistics Pocket Guide 2014–15

REF2014 quality profiles

A comparison of UK HEIs with the largest percentage of 4* and 3* research activity.

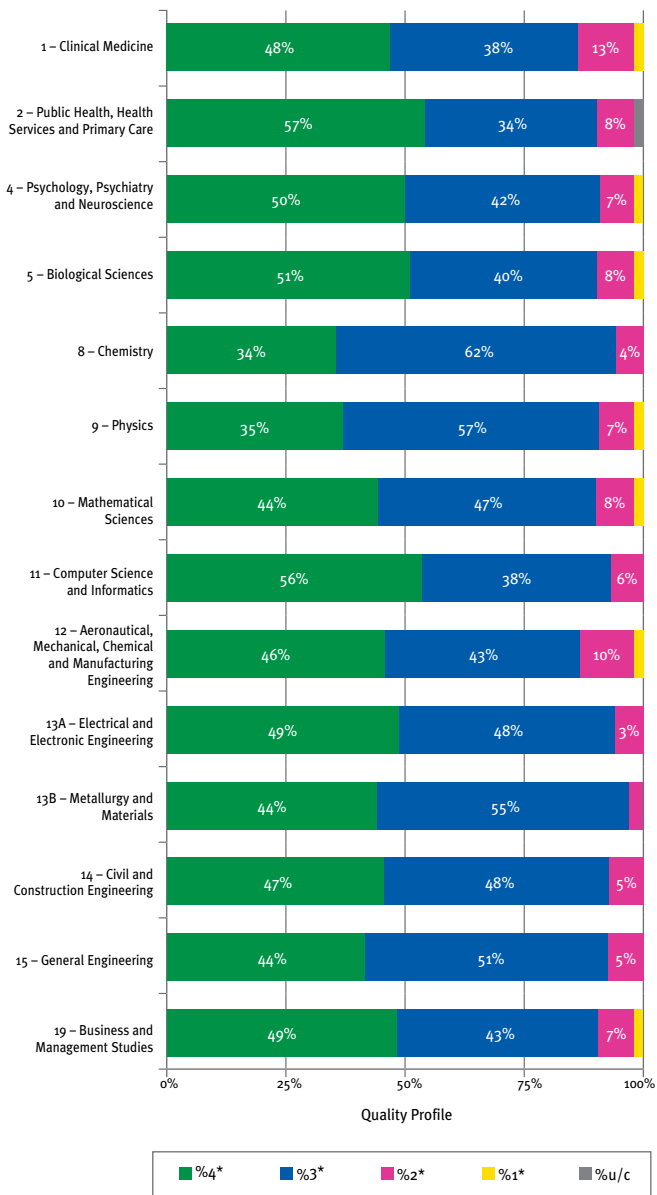
Institution¹



¹ Ordered by percentage of 4* (world-leading) and 3* (internationally excellent) research activity.

REF2014 quality profiles – Imperial College London results

Unit of Assessment¹



¹ Ordered by Unit of Assessment code.

Full-time student numbers

	Home/EU	Overseas	Female	Male	Total	New entrants
2014–15 full-time student numbers¹						
Undergraduate	6,433	2,621	3,088	5,966	9,054	2,610
Taught postgraduate	1,477	1,786	1,458	1,805	3,263	3,174
Research postgraduate	2,079	894	1,057	1,916	2,973	1,047
Total full-time students	9,989	5,301	5,603	9,687	15,290	6,831

2014–15 percentage breakdown²						
Undergraduate	42.1%	17.1%	20.2%	39.0%	59.2%	17.1%
Taught postgraduate	9.7%	11.7%	9.5%	11.8%	21.3%	20.8%
Research postgraduate	13.6%	5.8%	6.9%	12.5%	19.4%	6.8%
Total full-time students	65.3%	34.7%	36.6%	63.4%	100.0%	44.7%

2013–14 full-time student numbers¹						
Undergraduate	6,476	2,455	3,016	5,915	8,931	2,494
Taught postgraduate	1,380	1,546	1,300	1,626	2,926	2,525
Research postgraduate	2,035	843	1,039	1,839	2,878	912
Total full-time students	9,891	4,844	5,355	9,380	14,735	5,931

Percentage change over one year						
Undergraduate	-0.7%	6.8%	2.4%	0.9%	1.4%	4.7%
Taught postgraduate	7.0%	15.5%	12.2%	11.0%	11.5%	25.7%
Research postgraduate	2.2%	6.0%	1.7%	4.2%	3.3%	14.8%
Total full-time students	1.0%	9.4%	4.6%	3.3%	3.8%	15.2%

Percentage change over five years³						
Undergraduate	1.0%	17.0%	4.3%	5.6%	5.2%	5.3%
Taught postgraduate	-0.8%	78.1%	48.0%	19.8%	30.9%	32.3%
Research postgraduate	23.5%	29.6%	19.6%	28.7%	25.3%	69.4%
Total full-time students	4.7%	34.7%	16.0%	12.1%	13.5%	24.3%

¹ New entrants include Imperial graduates returning for higher degrees.

² New entrants shown as a percentage of total full-time student numbers.

³ In 2009-10, MRes students were classified as taught postgraduates rather than research postgraduates.

Numbers include seven Imperial College Union sabbatical officers registered as taught postgraduates.

Numbers include occasional students.

Numbers exclude postgraduate research students who are writing up (361 in 2014-15; 302 in 2013-14).

Part-time student numbers

	Home/EU	Overseas	Female	Male	Total	New entrants
2014–15 part-time student numbers¹						
Taught postgraduate	436	71	214	293	507	206
Research postgraduate	461	89	216	334	550	68
Total part-time students	897	160	430	627	1,057	274

	Home/EU	Overseas	Female	Male	Total	New entrants
2014–15 percentage breakdown²						
Taught postgraduate	41.2%	6.7%	20.2%	27.7%	48.0%	19.5%
Research postgraduate	43.6%	8.4%	20.4%	31.6%	52.0%	6.4%
Total part-time students	84.9%	15.1%	40.7%	59.3%	100.0%	25.9%

2013–14 part-time student numbers¹						
Taught postgraduate	532	78	255	355	610	274
Research postgraduate	498	88	234	352	586	65
Total part-time students	1,030	166	489	707	1,196	339

	Home/EU	Overseas	Female	Male	Total	New entrants
Percentage change over one year						
Taught postgraduate	-18.0%	-9.0%	-16.1%	-17.5%	-16.9%	-24.8%
Research postgraduate	-7.4%	1.1%	-7.7%	-5.1%	-6.1%	4.6%
Total part-time students	-12.9%	-3.6%	-12.1%	-11.3%	-11.6%	-19.2%

Percentage change over five years³						
Taught postgraduate	-9.4%	-13.4%	-7.0%	-12.0%	-9.9%	-35.0%
Research postgraduate	12.4%	-26.4%	-1.4%	7.1%	3.6%	28.3%
Total part-time students	0.7%	-21.2%	-4.2%	-2.8%	-3.4%	-25.9%

¹ New entrants include Imperial graduates returning for higher degrees.

² New entrants shown as a percentage of total part-time student numbers.

³ In 2009-10, MRes students were classified as taught postgraduates rather than research postgraduates.

Numbers include occasional students.

Numbers exclude postgraduate research students who are writing up (44 in 2014-15; 26 in 2013-14).

There is no part-time provision for undergraduate students.

Registered headcount in year one is used as an approximation for new entrants.

Total student numbers 2014–15

	UG	PG Research			PG Taught			Total	% change in total over	
		Full-time	Part-time	Total	Full-time	Part-time	Total		UG/PG	1 year
Faculty of Engineering	3,896	1,261	126	1,387	1,188	56	1,244	6,527	4.0%	14.5%
Aeronautics	423	74	15	89	101	8	109	621	11.9%	40.5%
Bioengineering	313	130	8	138	78	0	78	529	8.8%	57.0%
Chemical Eng	494	176	19	195	79	10	89	778	3.9%	4.3%
Civil & Environmental Eng	360	120	13	133	235	34	269	762	2.6%	-3.1%
Computing	487	138	24	162	153	2	155	804	0.8%	10.3%
Earth Science & Eng	297	139	6	145	164	0	164	606	1.0%	21.4%
Electrical & Electronic Eng	580	149	23	172	124	0	124	876	-0.3%	-2.0%
Energy Futures Lab	0	0	0	0	49	0	49	49	8.9%	-9.3%
Materials	292	143	6	149	64	0	64	505	13.2%	40.3%
Mechanical Eng	650	192	12	204	141	2	143	997	1.9%	16.6%
Faculty of Medicine¹	2,179	601	340	941	239	207	446	3,566	-0.9%	-2.2%
Faculty of Natural Sciences	2,979	1,059	84	1,143	529	17	546	4,668	2.2%	10.3%
Centre for Environmental Policy	0	32	8	40	148	2	150	190	-4.5%	12.4%
Chemistry	557	292	17	309	3	3	6	872	8.2%	24.7%
Life Sciences	822	218	14	232	131	1	132	1,186	0.3%	-0.8%
Mathematics	721	172	14	186	144	6	150	1,057	3.0%	9.0%
Physics	879	345	31	376	103	5	108	1,363	0.5%	13.6%
Business School	0	49	0	49	1,232	165	1,397	1,446	2.9%	80.8%
Non-Faculty	0	3	0	3	75	62	137	140	11.1%	-23.9%
Centre for Co-Curricular Studies ²	0	2	0	2	53	8	61	63	6.8%	-52.3%
Educational Development	0	1	0	1	0	54	54	55	17.0%	77.4%
INSPIRE	0	0	0	0	15	0	15	15	15.4%	7.1%
Sabbatical officers	0	0	0	0	7	0	7	7	0.0%	0.0%
Total	9,054	2,973	550	3,523	3,263	507	3,770	16,347	2.3%	12.2%

¹ UG numbers include students enrolled on Biomedical Science courses.

² The percentage change in total over 5 years is calculated including students who were registered in CHoSTM and the Department of Humanities in 2009-10.

Numbers include occasional students.

Numbers exclude postgraduate research students who are writing up.

There is no part-time provision for undergraduate students.

Joint Mathematics and Computing student numbers are split 50:50 between the Departments of Mathematics and of Computing.

Full-time equivalent (FTE) staff numbers and student:staff ratios 2014–15

	Academic staff	Research staff	Support staff	Total staff	Student load	Student:staff ratio ¹
Faculty of Engineering	367	856	428	1,651	6,039	16.4 : 1
Aeronautics	29	47	26	102	590	20.4 : 1
Bioengineering	31	62	41	134	483	15.4 : 1
Chemical Eng	39	115	49	202	668	17.2 : 1
Civil & Environmental Eng	50	49	53	152	677	13.5 : 1
Computing	51	134	35	220	846	16.7 : 1
Earth Science & Eng	44	82	34	160	574	13.1 : 1
Electrical & Electronic Eng	47	117	39	203	806	17.2 : 1
Energy Futures Lab	0	0	0	0	16	n/a
Inst. for Security Sci. & Tech.	1	5	2	8	0	n/a
Materials	30	111	34	174	504	16.8 : 1
Mechanical Eng	44	99	48	192	877	19.8 : 1
Engineering HQ	2	35	67	104	0	n/a
Faculty of Medicine	439	1,024	1,108	2,571	3,166	7.2 : 1
Faculty of Natural Sciences	334	670	378	1,381	4,280	12.8 : 1
Centre for Environmental Policy	15	28	19	62	196	12.8 : 1
Chemistry	41	135	47	223	771	18.7 : 1
Climate KIC ²	1	0	18	19	0	n/a
Grantham Inst. for Climate Change	3	4	9	15	3	1.1 : 1
Life Sciences	84	206	110	400	1,059	12.7 : 1
Mathematics	75	82	26	183	1,042	13.8 : 1
Physics	114	215	107	437	1,210	10.6 : 1
Natural Sciences HQ	0	0	43	44	0	n/a
Business School	63	27	148	238	1,653	26.4 : 1
Non-Faculty	4	1	41	46	169	40.3 : 1
Centre for Co-Curricular Studies	3	1	26	30	142	47.5 : 1
Centre for Academic English	0	0	8	8	2	n/a
Educational Development	1	0	7	8	25	21.0 : 1
Central Services	12	0	1,553	1,565	0	n/a
Total	1,219	2,578	3,657	7,453	15,308	12.6 : 1

¹ The student:staff ratio is the ratio of student load to academic staff.

² This relates to staff hosted by Imperial who manage and co-ordinate Climate KIC activities. Student load is the full-time equivalent teaching load undertaken by a department, taking account of service teaching supplied to and received from other departments. It includes research postgraduate supervision load. Short courses are excluded. Occasional student load is included. Staff numbers are inclusive of all sources of funding.

Applications and admissions – undergraduate¹

	Applications received for 2014-15 entry			New admissions 2014-15	Applications: admissions ratio for 2014 entry	Average tariff score on entry ²
	H/EU	O/S	Total			
Faculty of Engineering	3,487	3,790	7,277	1,119	6.5 : 1	557
Aeronautics	348	274	622	111	5.6 : 1	575
Bioengineering	175	188	363	89	4.1 : 1	551
Chemical Eng	446	599	1,045	125	8.4 : 1	589
Civil & Environmental Eng	245	387	632	93	6.8 : 1	569
Computing	685	509	1,194	150	8.0 : 1	534
Earth Science & Eng	258	92	350	86	4.1 : 1	505
Electrical & Electronic Eng	324	568	892	186	4.8 : 1	561
Materials	210	272	482	116	4.2 : 1	521
Mechanical Eng	796	901	1,697	163	10.4 : 1	577
Faculty of Medicine³	1,838	799	2,637	330	8.0 : 1	545
Faculty of Natural Sciences	3,591	2,184	5,775	904	6.4 : 1	555
Chemistry	542	370	912	170	5.4 : 1	530
Life Sciences	1,004	673	1,677	266	6.3 : 1	525
Mathematics	849	727	1,576	232	6.8 : 1	572
Physics	1,196	414	1,610	236	6.8 : 1	584
Total	8,916	6,772	15,688	2,353	6.7 : 1	554

¹ Applications as at October 2014. Applications for deferred entry in 2014 are included.

² The method used in calculating the average tariff scores includes all qualifications that fall within the UCAS tariff points system, where A-level tariff scores are A*=140, A=120, B=100, C=80, D=60, E=40.

³ Numbers include students enrolled on Biomedical Science courses. Joint Mathematics and Computing applications and admissions are split 50:50 between the Departments of Mathematics and of Computing. Numbers exclude occasional students.

Applications and admissions – postgraduate¹

	Applications received for 2014–15 entry			New admissions 2014–15			Applications: admissions ratio for 2014 entry
	Taught	Research	Total	Taught	Research	Total	Total
Faculty of Engineering	8,030	2,292	10,322	1,081	326	1,407	7.3 : 1
Aeronautics	339	235	574	102	26	128	4.5 : 1
Bioengineering	251	252	503	77	53	130	3.9 : 1
Chemical Eng	406	263	669	74	39	113	5.9 : 1
Civil & Environmental Eng	1,845	169	2,014	250	37	287	7.0 : 1
Computing	1,613	290	1,903	151	42	193	9.9 : 1
Earth Science & Eng	1,515	317	1,832	164	34	198	9.3 : 1
Electrical & Electronic Eng	1,020	306	1,326	116	25	141	9.4 : 1
Energy Futures Lab	334	0	334	49	0	49	6.8 : 1
Materials	288	206	494	63	34	97	5.1 : 1
Mechanical Eng	419	254	673	35	36	71	9.5 : 1
Faculty of Medicine	1,408	954	2,362	329	266	595	4.0 : 1
Faculty of Natural Sciences	2,451	1,887	4,338	517	466	983	4.4 : 1
Centre for Environmental Policy	330	95	425	148	9	157	2.7 : 1
Chemistry	4	475	479	0	156	156	3.1 : 1
Life Sciences	520	350	870	129	122	251	3.5 : 1
Mathematics	1,233	336	1,569	140	55	195	8.0 : 1
Physics	364	631	995	100	124	224	4.4 : 1
Business School	7,909	194	8,103	1,380	11	1,391	5.8 : 1
Non-Faculty	201	16	217	54	0	54	4.0 : 1
Centre for Co-Curricular Studies	201	16	217	54	0	54	4.0 : 1
Total	19,999	5,343	25,342	3,361	1,069	4,430	5.7 : 1

¹ Applications and admissions include full-time and part-time students.

Data do not include applications and admissions for courses where the applications and/or admissions are not handled centrally by the College.

Numbers exclude occasional students.

Applications data include applications received up to May 2015.

Degrees awarded

UNDERGRADUATE

	2014				2013	
	First	2.1	Total ¹	% First/2.1	Total ¹	% First/2.1
Faculty of Engineering	387	426	910	89.3%	895	90.6%
Aeronautics	43	27	74	94.6%	79	94.9%
Bioengineering	21	22	52	82.7%	55	89.1%
Chemical Eng	53	63	119	97.5%	118	96.6%
Civil & Environmental Eng	31	35	69	95.7%	103	93.2%
Computing	69	42	127	87.4%	103	85.4%
Earth Science & Eng	32	48	91	87.9%	69	91.3%
Electrical & Electronic Eng	64	74	161	85.7%	171	86.0%
Materials	23	30	68	77.9%	67	94.0%
Mechanical Eng	51	85	149	91.3%	130	89.2%
Faculty of Medicine	152	219	730	n/a	781	n/a
Medicine – MBBS	n/a	n/a	341	n/a	376	n/a
School of Medicine	152	219	389	95.4%	405	94.6%
Faculty of Natural Sciences	329	372	823	85.2%	740	79.9%
Chemistry	42	61	122	84.4%	106	78.3%
Life Sciences	84	152	267	88.4%	219	86.3%
Mathematics	106	80	226	82.3%	200	70.5%
Physics	97	79	208	84.6%	215	82.8%
Total	868	1,017	2,463	88.8%	2,416	87.5%

POSTGRADUATE

				% change over	% change over
	2014	2013	2009	1 year	5 years
PhD/DSc/MD/MD(Res)/EngD/MRes/MS	1,145	1,022	801	12.0%	42.9%
MSc/MEd/MBA/MPH	2,842	2,532	1,707	12.2%	66.5%
MPhil	14	8	5	75.0%	180.0%
CAS/PGCert/PGDip	28	14	55	100.0%	-49.1%
Total	4,029	3,576	2,568	12.7%	56.9%

¹ Total includes all degree classifications. Total does not include awards made to occasional students.

Academic expenditure 2013–14

	General funds		Research grants and contracts		Total £k	% of total
	Staff £k	Other ¹ £k	Staff £k	Other £k		
Faculty of Engineering	47,274	15,459	39,340	29,673	131,746	26.0%
Aeronautics	2,924	1,098	2,375	1,373	7,770	1.5%
Bioengineering	3,111	1,033	4,068	3,309	11,521	2.3%
Chemical Eng	5,571	2,796	4,965	5,788	19,120	3.8%
Civil & Environmental Eng	5,908	994	2,812	2,822	12,536	2.5%
Computing	6,036	1,634	6,205	2,517	16,392	3.2%
Earth Science & Eng	5,583	2,125	4,192	2,897	14,797	2.9%
Electrical & Electronic Eng	5,946	1,472	5,534	2,417	15,369	3.0%
Inst. of Biomedical Eng	0	2	0	20	22	0.0%
Inst. for Security Sci. & Tech.	269	70	125	50	514	0.1%
Materials	3,330	1,543	4,746	4,090	13,709	2.7%
Mechanical Eng	5,954	1,976	3,855	4,090	15,875	3.1%
Engineering HQ	2,642	716	463	299	4,120	0.8%
Faculty of Medicine	70,953	9,578	84,362	71,337	236,230	46.7%
Department of Medicine	22,829	3,124	31,754	24,019	81,726	16.1%
Department of Surgery & Cancer	11,733	1,103	20,408	12,798	46,042	9.1%
Inst. of Clinical Sciences	1,196	807	2,387	2,986	7,376	1.5%
Inst. of Global Health	516	224	74	869	1,683	0.3%
National Heart and Lung Inst.	14,305	1,859	15,813	12,914	44,891	8.9%
School of Public Health	8,184	760	13,676	15,696	38,316	7.6%
Medicine HQ	12,190	1,701	250	2,056	16,197	3.2%
Faculty of Natural Sciences	42,212	9,647	33,922	20,083	105,864	20.9%
Centre for Environmental Policy	1,364	410	1,946	804	4,524	0.9%
Chemistry	5,829	1,375	6,015	4,406	17,625	3.5%
Climate KIC ²	1,395	2,112	0	0	3,507	0.7%
Grantham Inst. for Climate Change	94	18	937	360	1,409	0.3%
Life Sciences	10,777	2,332	10,484	7,291	30,884	6.1%
Mathematics	8,209	839	3,134	1,186	13,368	2.6%
Physics	12,138	2,626	11,382	6,037	32,183	6.4%
Natural Sciences HQ	2,406	(65)	24	0	2,365	0.5%
Business School	17,156	7,939	1,808	576	27,479	5.4%
Non-Faculty³	3,150	1,110	3	472	4,735	0.9%
Total	180,745	43,733	159,435	122,141	506,054	100%

¹ Departmental bursaries (£21m) have been excluded following changes in statutory reporting requirements.

² This covers the management and co-ordination costs only. Climate KIC associated research grants are recognised in other academic departments across the College.

³ Includes Continuing Education plus individual research projects accounted for in non-faculty areas.

Research grants and contracts income 2013–14

	Research councils £k	UK charities £k	UK gov., incl. health auths. £k	UK industry £k	EU and overseas industry £k	EU government bodies ¹ £k	Other £k	Total £k
Faculty of Engineering	34,272	6,154	6,244	12,376	15,113	17,992	4,444	96,596
Aeronautics	1,949	82	621	240	76	1,839	47	4,854
Bioengineering	3,307	2,120	376	347	49	2,224	437	8,861
Chemical Eng	4,718	134	833	1,691	5,991	2,162	467	15,997
Civil & Environmental Eng	1,684	1,211	498	949	737	1,172	739	6,989
Computing	5,643	657	637	1,110	280	3,651	328	12,306
Earth Science & Eng	3,519	218	294	2,322	4,962	691	341	12,346
Electrical & Electronic Eng	4,156	968	578	1,062	338	3,194	626	10,922
Inst. of Biomedical Eng	5	15	0	0	0	0	0	20
Inst. for Security Sci. & Tech.	187	0	194	0	0	0	54	435
Materials	5,462	395	767	1,142	539	1,955	1,324	11,585
Mechanical Eng	3,113	314	1,392	3,329	2,138	1,104	83	11,472
Engineering HQ	530	40	54	185	1	1	0	811
Faculty of Medicine	31,481	50,427	46,990	6,059	8,176	11,967	22,317	177,417
Department of Medicine	13,842	20,097	16,635	2,151	1,209	4,545	5,167	63,647
Department of Surgery & Cancer	5,366	10,906	13,826	1,679	2,499	2,227	628	37,131
Inst. of Clinical Sciences	2,658	1,366	395	19	1	1,004	45	5,487
Inst. of Global Health	0	0	0	0	357	0	587	944
National Heart and Lung Inst.	5,185	13,662	5,416	1,544	3,198	1,687	3,180	33,871
School of Public Health	3,333	3,506	10,503	701	872	2,504	12,612	34,031
Medicine HQ	1,097	890	215	(35)	40	0	97	2,306
Faculty of Natural Sciences	40,228	7,763	3,199	2,269	1,591	11,285	6,476	72,811
Centre for Environmental Policy	946	28	937	228	129	632	810	3,710
Chemistry	6,784	991	365	797	816	2,868	409	13,028
Grantham Inst. for Climate Change	83	0	62	57	0	13	1,279	1,493
Life Sciences	10,732	5,298	(18)	310	626	3,368	2,650	22,967
Mathematics	3,564	178	252	478	37	1,774	85	6,368
Physics	18,096	1,267	1,601	400	(16)	2,631	1,242	25,220
Natural Sciences HQ	24	0	0	0	0	0	0	24
Business School	2,041	133	523	331	52	278	176	3,534
Non-Faculty²	271	222	0	0	0	2	0	495
Total	108,294	64,698	56,957	21,034	24,931	41,525	33,414	350,853

¹ Includes the European Commission.

² Includes the Centre for Co-Curricular Studies and the Library plus other research grants and contracts income accounted for in non-faculty areas.

Notes

These statistics are the latest available and an element of judgement has been involved in selecting and presenting the figures. They cover various periods and comparisons should be made with care. Numbers have been rounded as appropriate and so may not sum to totals.

Financial data are for the year ending 31 July 2014.

Staff numbers are as recorded on 31 December 2014, and FTE staff numbers are calculated according to actual contracted time.

Student numbers are as recorded on 31 December 2014 unless otherwise stated.

Full-time equivalent (FTE) student numbers include part-time students counted *pro-rata* to full-time.

Home and EU (H/EU) = students from the UK and European Union.
Overseas (O/S) = students from non-EU countries.

MRes students are counted as postgraduate research (PGR) from 2010-11 entry onwards.

From 1 August 2010, members of the Institute of Biomedical Engineering were employed by one or more home department.

All statistics regarding the MSc in Sustainable Energy Futures are shown under the Energy Futures Lab.

Departments have been named in full wherever possible. Exceptions are as follows:

- CHoSTM is the Centre for History of Science, Technology & Medicine. It transferred to King's College London with effect from August 2013.
- Climate KIC is the Climate Knowledge and Innovation Community.

The front and inside cover show the quality profiles from the 2014 Research Excellence Framework (REF), an assessment of the quality of research in UK higher education institutions. The REF quality profiles present the proportion of each submission judged

by the panels to have met each of the quality levels defined below. Quality levels of research activity are defined in terms of originality, significance and rigour:

- 4*: World-leading
- 3*: Internationally excellent
- 2*: Recognised internationally
- 1*: Recognised nationally
- Unclassified (u/c): Falls below the standard of nationally recognised work.

For the front cover please note:

- The institutional quality profile is comprised of the aggregate of individual Unit of Assessment (UoA) quality profiles weighted by Category A Staff FTE.
- Category A Staff FTE = academic staff in post on 31 October 2013 who were selected for submission into REF2014.
- For each institution, the data include submissions to all UoAs.
- The data exclude specialist institutions (i.e. those submitting to two or fewer UoAs).

For the inside cover please note that the REF UoAs are broad subject areas that in some cases do not map exactly onto the College's departments. In particular:

- Departments within the Faculty of Medicine submitted to UoAs 1 (Clinical Medicine), 2 (Public Health, Health Services and Primary Care), and 4 (Psychology, Psychiatry and Neuroscience).
- The Department of Bioengineering submitted to UoA 15 (General Engineering).
- The Departments of Aeronautics, Chemical Engineering, Earth Science and Engineering and Mechanical Engineering submitted to UoA 12 (Aeronautical, Mechanical, Chemical and Manufacturing Engineering).

Issued by
Strategic Planning Division
Imperial College London
South Kensington Campus
London, SW7 2AZ, UK
Tel: +44 (0)20 7594 7275
Email: plan.sec@imperial.ac.uk
www.imperial.ac.uk/planning

© Imperial College London 2015