

Introducing our plans for a new academic building at White City Campus

Imperial's development of a new academic building is the next major step for the White City Campus. It will offer new facilities for collaborative research and teaching, as well as spaces for the community. It will be a place where great ideas grow and creativity flourishes.

We are consulting on our plans and invite you to:



Explore

Learn about our plans for a new academic building.



Ask

Speak to the team and ask questions at an event or by contacting us.



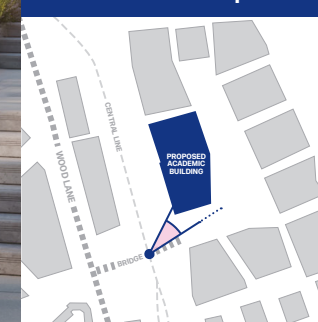
Comment

Share your feedback by filling out a form.



The proposed academic building will be located next to the new bridge connecting to Wood Lane.

View orientation plan



White City Campus – the masterplan

In 2019, Imperial was granted Outline Planning Permission from the London Borough of Hammersmith & Fulham for the south campus Masterplan which covers the 14-acre site located south of the Westway (A40).

The approval granted Imperial with permission to develop a number of buildings and two larger development plots. This included new dedicated spaces for research and business uses, alongside new homes, a new hotel and spaces for retail and leisure, including cafés and restaurants.

The approval included permission for a building in the location next to the Central Line and close to the new bridge connecting to Wood Lane – this is the proposed location of the new academic building.

In numbers

White City Campus today: _____

5,000+

academics, researchers, clinicians and students



100+

pioneering companies



1.5m sq ft

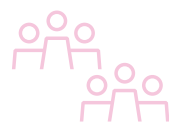
of space delivered



When complete: _____

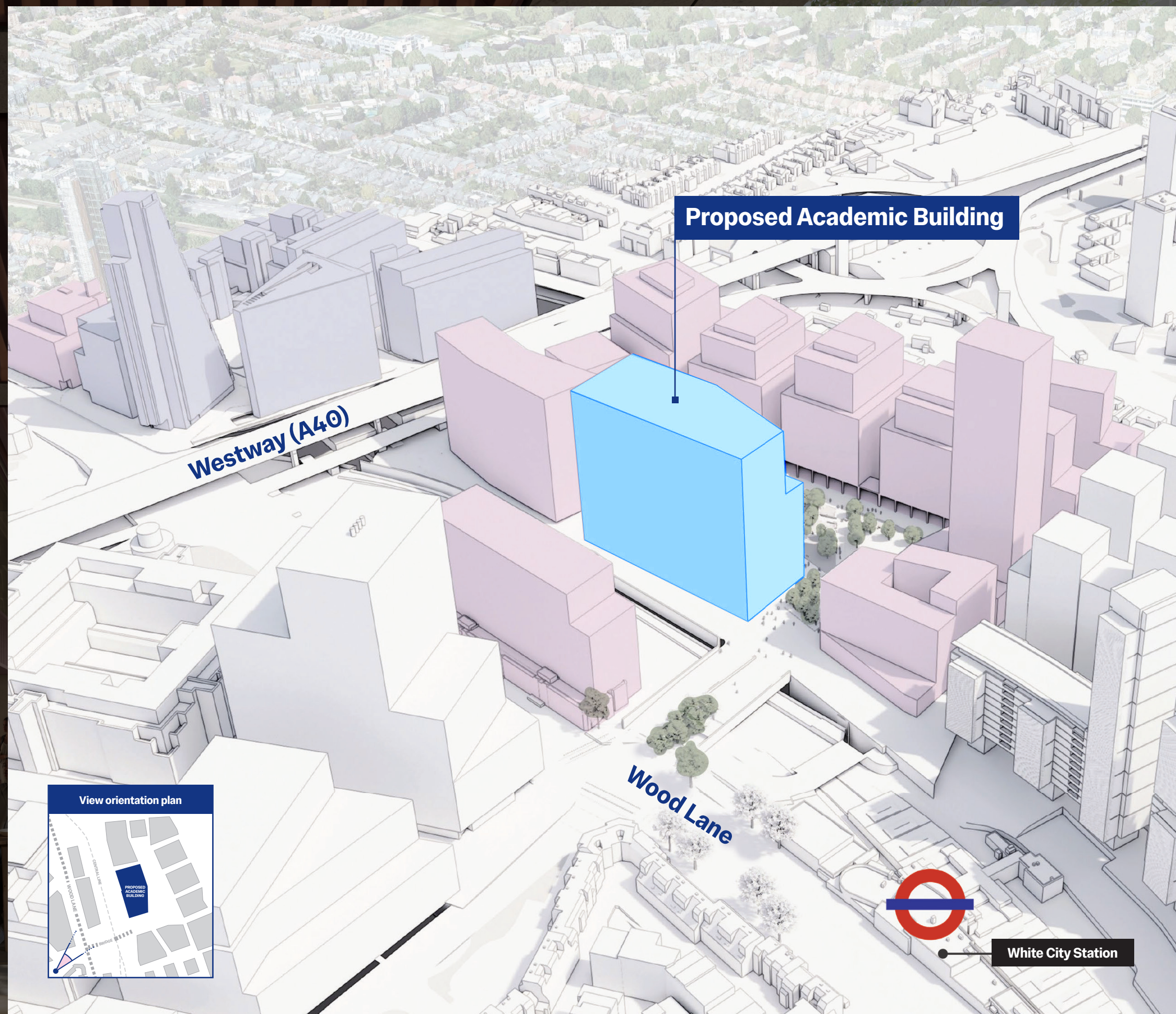
25,000

people living, working and studying here



3.8m sq ft

of mixed-use space



White City Campus – the development

Imperial's White City Campus is where science, technology and business tackle some of our greatest global challenges.

While our impact is global, our connections in White City run deep. We are working with local schools, residents and community groups, and creating places across our campus where everyone is welcome.

We have already made significant progress, with new buildings now home to thousands of researchers, academics, businesses and residents, as well as spaces which welcome the local community.

Most recently we opened Perkin's Green, a new garden at the heart of the north campus, named after William Henry Perkin – a famous Imperial chemist and entrepreneur best known for his 'accidental' discovery of mauveine, the first synthetic dye. We have also improved the accessibility of our campus with a new bridge to Wood Lane creating dedicated routes for pedestrians, cyclists and vehicles. Imperial also secured approval for a new East-West Link connecting White City and North Kensington.



The story so far

- **2009**
Imperial purchases its first parcel of land in White City (north site).
- **2013**
Imperial acquires additional land to the south, expanding the campus footprint.
- **2012 – 2024**
Rapid development of the north site, including new student accommodation, research hubs and green spaces. Scale Space also opens in 2021.
- **2019**
The London Borough of Hammersmith & Fulham approves Imperial's masterplan for the south campus.
- **2024 – 2025**
Major infrastructure works begin on the south campus, including new connections over the Central Line connecting the campus to Wood Lane.



Imperial's vision for the academic building

Artificial intelligence and machine learning are accelerating the way in which data shapes our society, our economy, how we live and work, as well as our health and wellbeing.

New digital tools, together with the skilled scientists and engineers to apply them accurately and safely, are urgently needed to address the challenges facing our environment, healthcare systems and security.

The academic building will create a powerful engine for data science, AI and machine learning by bringing together computer scientists, mathematicians and business experts at an unprecedented scale in a single dedicated building that promotes collaborative research and delivers an outstanding student experience.

The academic building will:

- **Expand the education of scientists, entrepreneurs and future leaders** who understand how to harness information and technology to grow new companies, deliver sustainable prosperity and promote societal wellbeing.
- **Convene and co-locate academics, industry and other stakeholders** to address the greatest societal challenges through the expert application of new transformational technologies.
- Enable the convergence of computer science, statistics and mathematics to **drive groundbreaking discoveries and innovative techniques** that will reshape the landscape of business, technology and science.
- **Deliver world-leading research** for the environment, energy engineering, drug discovery, population health and security science.



The new academic building will bring footfall to the south campus.

View orientation plan



A place for collaboration and connection

The academic building will support the vision for White City Campus to be an open and welcoming environment for all.

The ground and first floors will be open to Imperial staff and students, White City Campus users and the local community, offering spaces to meet, relax, study and spend time.

The shared spaces of the building will:

- Be a **welcoming space** that balances the movement of people with moments of pause, with places to sit and gather with others, supported by clear information and intuitive wayfinding for visitors.
- Offer **shade, shelter, seating and wind protection** via the colonnades, enabling year-round use.
- **Connect to the public realm**, which will include two acres of public space on the south campus.
- Support the **emerging designs for the pedestrianised central square**, which will include green spaces, lawns and planting, and a variety of informal spaces for people to collaborate and socialise.



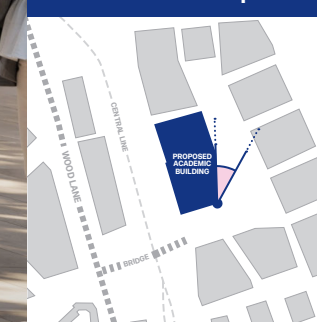
GET INVOLVED

Tell us what else you'd like to see in the shared spaces of the academic building



A canopy at the exterior ground floor will provide a warm welcome to the academic building.

View orientation plan



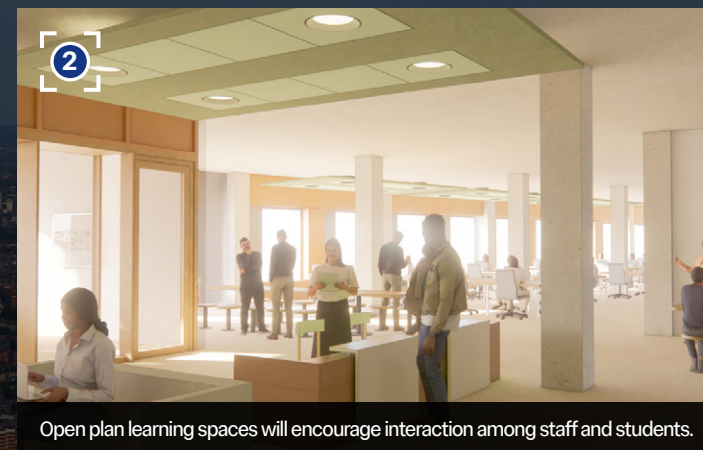
What's inside?

Set across 12 storeys, the building will be a new home for Imperial staff and students. It will also include spaces for the community, with the ground and first floors open to the public.

The building's flexible, high-quality facilities are designed to be adaptable so they can meet the evolving needs of Imperial's staff and students.

This will include:

- **Research and laboratory facilities**, tailored to departmental needs.
- **Workspaces for staff** including offices and meeting rooms.
- **Teaching and learning spaces**, including lecture theatres, classrooms, workshop spaces and seminar rooms.
- **Social and collaboration spaces** to encourage interaction.
- **Amenities** including a refectory, computer lab, cafés, areas for events and exhibitions, and garden terraces at different levels across the building.



The ground floor

An inclusive place where everyone is welcome.



GET INVOLVED

Tell us what facilities you'd like to see on the ground floor of the academic building

The ground floor

Café

Main entrance

Research entrance

Flexible town hall space

Exhibition area

Welcome reception

2

View from the mezzanine gallery overlooking the ground floor.

3

View from the main staircase looking down at the ground floor.

1

View from the welcome reception area on the ground floor.

3

1

2

The mezzanine level



Scan the QR code for an immersive look from the main staircase on the mezzanine level



The first floor

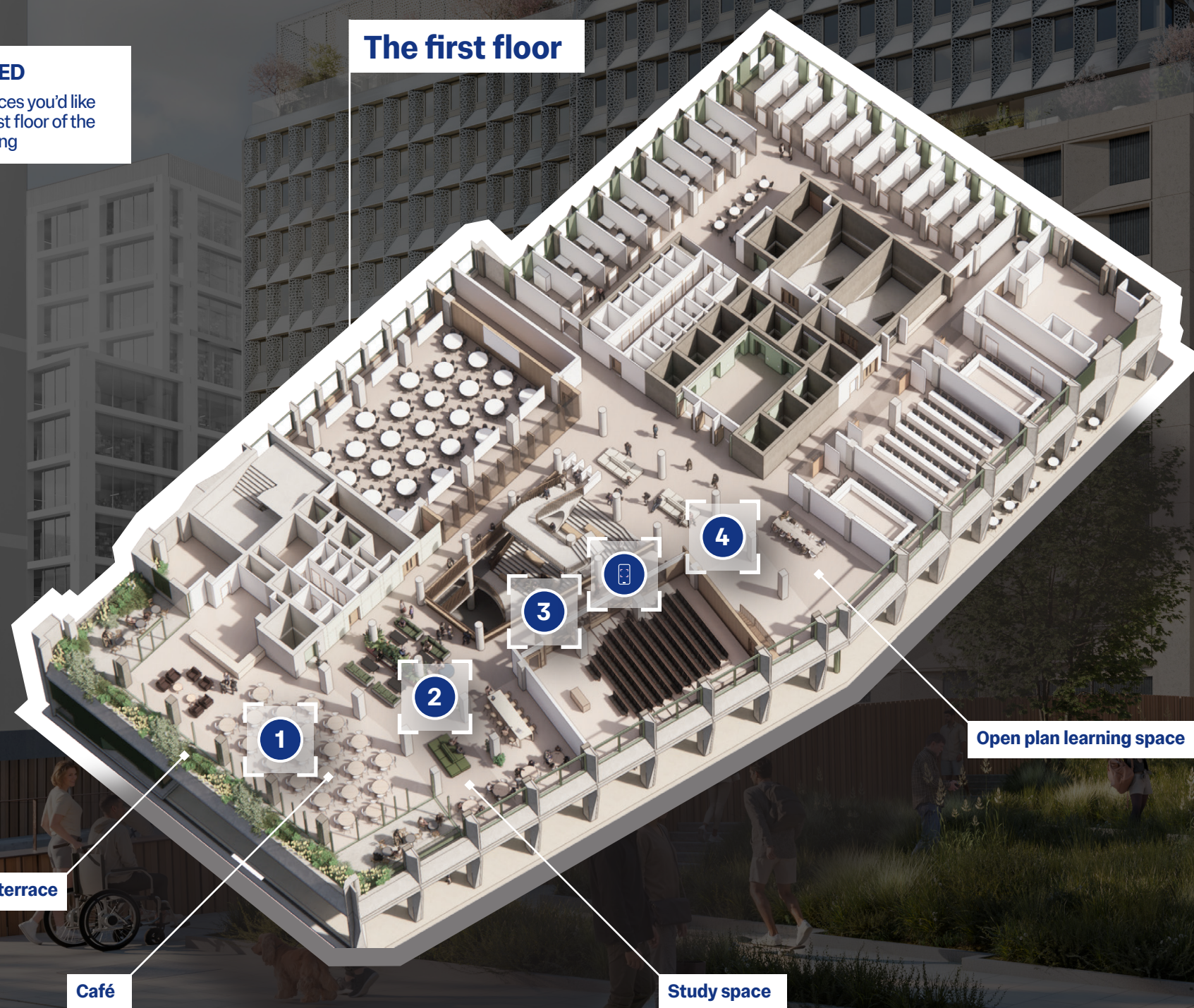
Flexible areas for gatherings, showcases and community events.



GET INVOLVED

Tell us what spaces you'd like to see on the first floor of the academic building

The first floor



1

View from the first floor café.

2

View from the first floor study space.

3

View from the first floor overlooking the main staircase.

4

View from the first floor open plan learning space.

Open plan learning space

Events terrace

Café

Study space



Scan the QR code for an immersive look from the first floor balcony



Fit for the future

Sustainable in design and operation.

Imperial's ambition is to be net zero by 2040. The academic building will help shape future sustainability standards for the campus, for Imperial, and beyond – it is part of the UK Net Zero Carbon Buildings Standard pilot programme.

The academic building will be BREEAM 'Outstanding'. It will run entirely without fossil fuels, benefiting from efficient design and energy systems and using zero-carbon technologies which reduce total carbon emissions across construction and operation. The building is predicted to exceed carbon saving targets set by the Greater London Authority.

1,531m² of green space will be incorporated across six terraces and four green roofs, providing new landscaped spaces for relaxing and socialising that support the wellbeing of students, staff and visitors.

Materials used across the building's exterior combine metal, concrete and glass in a 'lean' design which minimises waste and supports the circular economy.

Inside the building, natural warm materials such as timber, cork and rubber tiles are used alongside high-recycled materials such as Troldekt (wood and cement), acoustic felt panels and carpet, providing a calm and neutral background for students, staff and visitors.



Perforated aluminium.



Maximising opportunities for greenery.



Sustainable hardwood.



Architectural concrete.



Pre-cast concrete.

Active travel and accessibility

It needs to be easy to travel to the academic building in a sustainable way.

Pedestrians

A vehicle-free public realm across the wider campus gives pedestrians priority including a pedestrian bridge from Wood Lane and new routes beneath the Westway and to the south.

Cyclists

The academic building will include cycle spaces for all bike types, including long-stay parking for accessible bikes. There will also be inclusive end-of-trip facilities such as showers and lockers for students and staff. Two-way cycle routes on campus will connect to the Wood Lane Cycle Superhighway.

Vehicles

We aim to minimise vehicle movements, but will support essential car journeys through Blue Badge parking and taxi drop-off spots.

Your feedback

Let us know your comments on our proposals by completing a feedback form.

For more information on Imperial's White City Campus, visit:

www.imperial.ac.uk/white-city-campus



or scan the QR code

You can also contact us to receive a paper feedback form, which you can return to:

c/o Imperial College London
7 Bayley Street, London
WC1B 3HB

Contact us:



whitecity.development@imperial.ac.uk



020 7323 3544

What happens next?

- **September – October 2025**
Public consultation on the academic building.
- **Late 2025**
Planning application submitted to the London Borough of Hammersmith & Fulham.
- **Mid 2026**
If approved, construction scheduled to begin.
- **Late 2029**
Target construction completion.
- **Ongoing**
Further engagement and consultation on future plans for the White City Campus.

Aerial view of White City Campus, looking south.