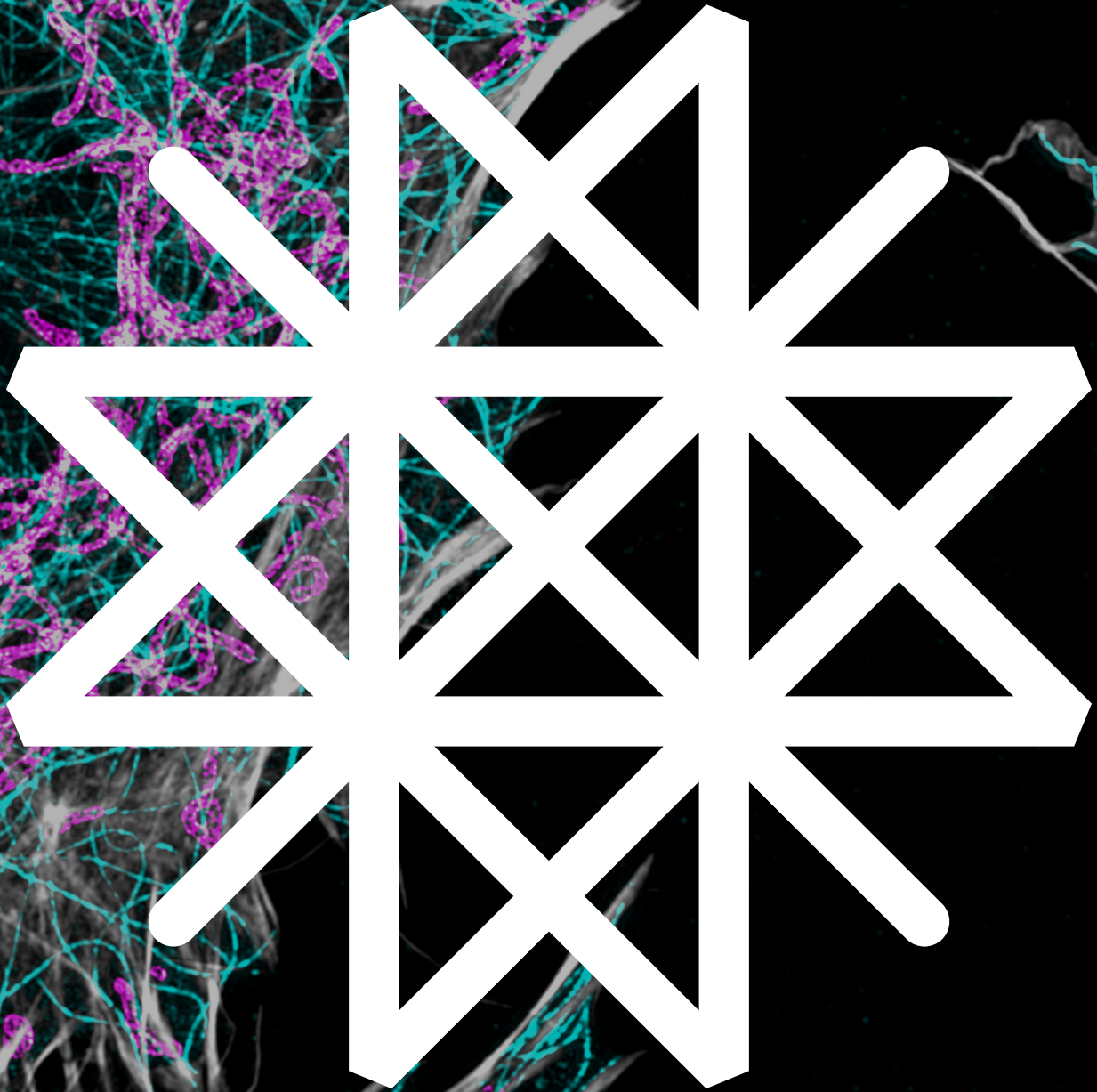


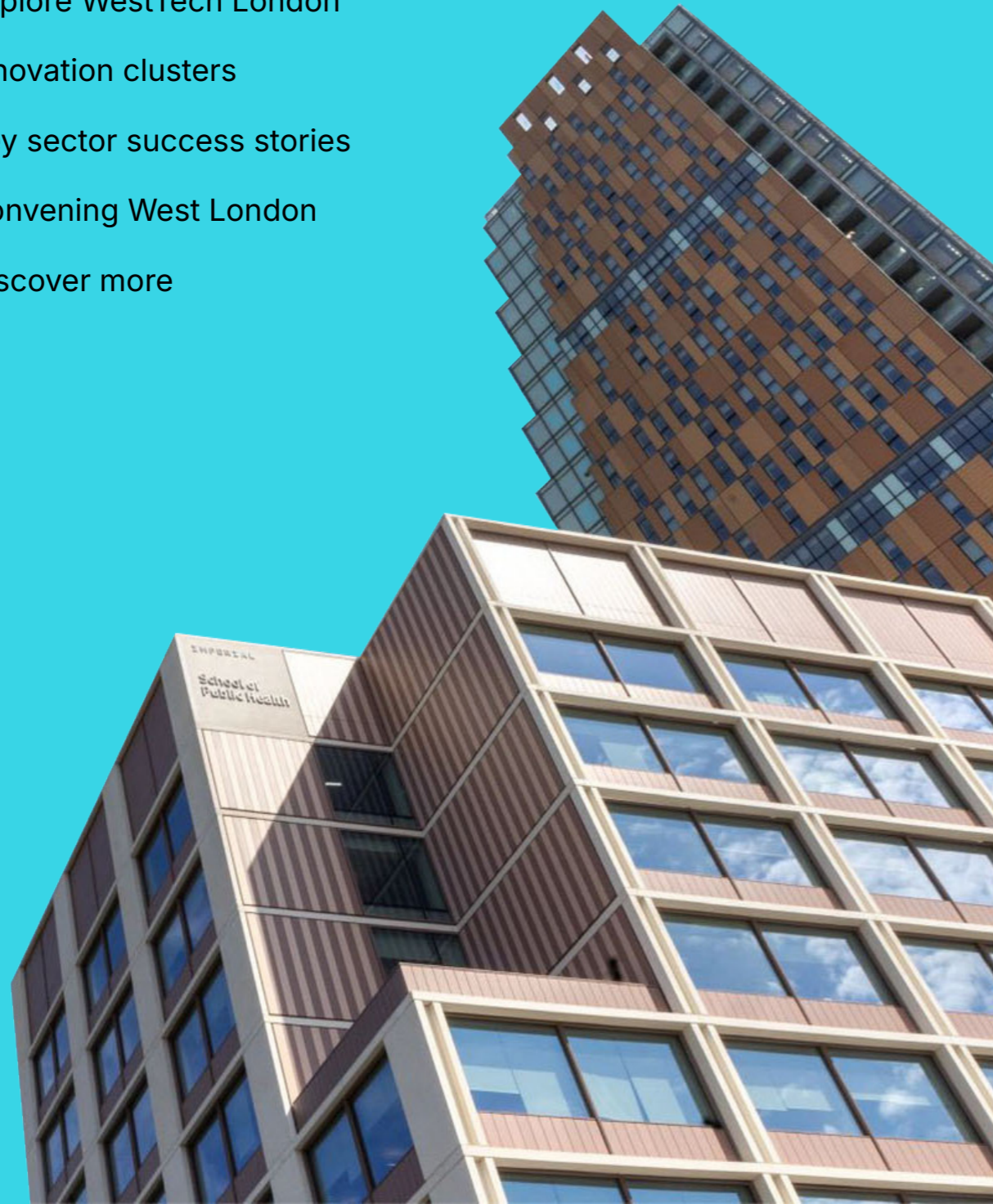
WESTTECH
LONDON



Create the future
in WestTech London

Contents

- 03 Foreword
- 04 What is WestTech London?
- 06 Our aims and stakeholders
- 08 Our innovators
- 09 Our impact
- 10 Explore WestTech London
- 12 Innovation clusters
- 20 Key sector success stories
- 26 Convening West London
- 27 Discover more



Foreword

Professor Hugh Brady
President of Imperial College London

Imperial is the anchor institution behind WestTech London, a new powerhouse for frontier innovation and entrepreneurship that is creating jobs, attracting investment, driving economic growth and strengthening the UK's position as a global leader in science and technology.

Our ambition is for WestTech London to harness the distinct strengths of West London – its exceptional anchor research institutions, diverse and productive population, access to investment capital, high-quality existing and planned infrastructure including major transport links, and a political environment that supports planned urban development and inclusive growth – to **deliver a globally competitive innovation ecosystem** that can drive the next era of scientific and technological collaboration.

We know that this defining opportunity will not be realised by Imperial alone and we are pleased to have been joined by ambitious stakeholders from across West London who share our vision for enabling frontier innovation to deliver real-world impact.

Together, we are creating the conditions for companies to **grow at pace, with global ambition**. We are ensuring that WestTech London can support the full growth journey for frontier innovation, from discovery research to startup through scaling, advanced manufacturing and commercialisation.

WestTech London is a keystone in the capital's innovation economy and is fast becoming a major hub in the national innovation network.

With unrivalled transport connectivity, including through HS2, it connects and amplifies the impact of the UK's other leading innovation ecosystems, including the London-West Midlands Growth Corridor, Oxford, Cambridge and the Golden Triangle, the Bristol Innovation Arc and the Southwest, as well as Manchester's innovation district and the North. And with London Heathrow on our doorstep, **we are establishing innovation bridges into leading centres of innovation across the world**.

The connections and collaborations being forged through WestTech London are creating an engine for frontier innovation growth and for generations to come.

What is WestTech London?

Established by Imperial College London, WestTech London unites stakeholders around a shared mission to unlock the potential of West London's innovation landscape.

Capitalising on its world-class universities and research institutions, diverse talent pool, rich industrial heritage and major transport links to the UK and the world, WestTech London is **delivering a thriving ecosystem that is creating jobs, attracting investment and driving inclusive economic growth.**

Innovation clusters

WestTech London is anchored by four major research and innovation clusters, and encompasses the wider West London innovation economy. It connects a network of science, research and healthcare locations and innovation-led growth areas across West London.

**OLD OAK
INNOVATION
CLUSTER**

see page 18

**WHITE CITY
INNOVATION
DISTRICT**

see page 12

**PADDINGTON
LIFE SCIENCES**

see page 14

**ALBERTOPOLIS
(SOUTH
KENSINGTON)**

see page 16

Why West London?

£70 billion GVA

The UK's second biggest economic region

60%

Diverse and highly skilled talent pool - nearly 60% educated to degree level, higher than Silicon Valley

150,000

Potential to create 150,000 new jobs within five years

Supercluster

of science, tech, life sciences and deep tech innovators

Unparalleled

concentration of industrial, creative and knowledge-intensive sectors

40%

Nearly 40% of the capital's brownfield sites offering a unique scale of opportunity

£80 billion

in infrastructure investment will secure West London's status as Europe's best-connected region

Our aims

WestTech London is igniting a new era of innovation across West London – connecting world-class research and high-growth companies to attract investment, create jobs, deliver growth and accelerate the industries of tomorrow.

This dynamic ecosystem is built to power frontier technologies, scale ambitious businesses and drive opportunity. WestTech London's key aims are to:



Boost innovation capacity



Attract global investment



Create jobs and skills pathways



Support high-growth sectors



Accelerate R&D commercialisation



Build a nationally and globally connected cluster

Our stakeholders

WestTech London brings together a powerful network, spanning industry, education, local government and innovation hubs, around a shared mission to unlock the potential of West London's innovation landscape.

Our stakeholders share a commitment to accelerating growth, nurturing talent, and driving the region's most ambitious ideas forward. Together, we are shaping the future of West London.

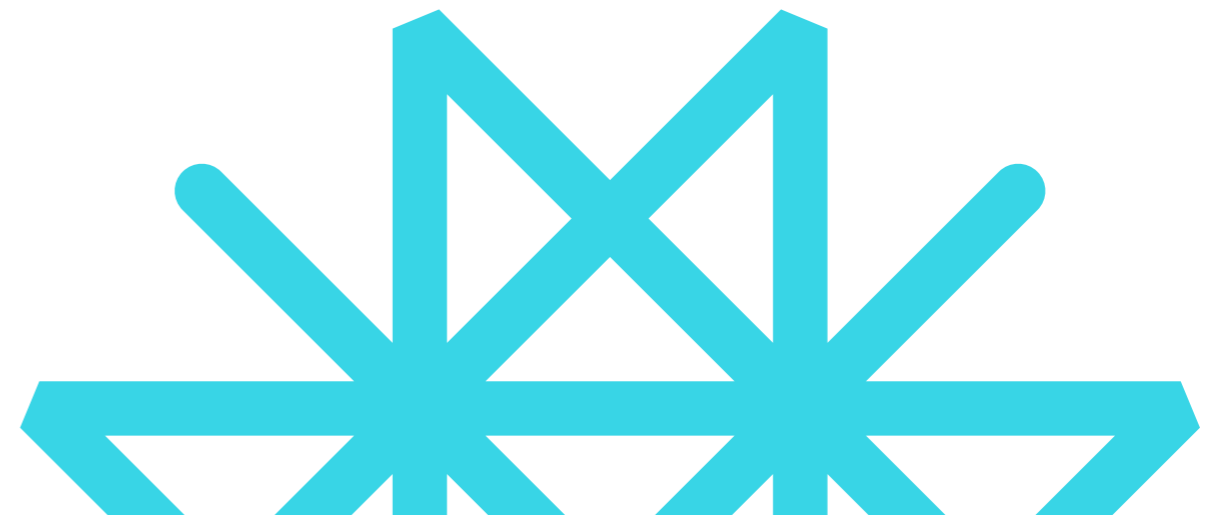
IMPERIAL



UPSTREAM LONDON



OPDC
OLD OAK AND
PARK ROYAL
DEVELOPMENT
CORPORATION



Our innovators

WestTech London is home to some of the world’s most exciting organisations, from fast-growth startups to major global corporates, making it one of the UK’s most dynamic ecosystems for frontier innovation.



Our impact

WestTech London combines strong foundations with untapped potential which will enable it to go further as a leader in frontier innovation in London, in Europe and globally.

West London is already home to traditional high-value industries with existing strengths in the professional, scientific and technological sectors. The unique opportunity for WestTech London is to harness this leadership in science and technology to build a global centre for frontier industries.

According to analysis by WPI Economics, the frontier innovation sector in the WestTech London area, even on current growth rates, is on track to be larger than the rest of London’s combined by 2030.

WestTech London today

1,000 Frontier innovation businesses	20,000 Frontier innovation employees	£9bn Annual turnover by businesses in 2023
--	--	--

Even on current growth rates, by 2030 WestTech London has the potential to grow to:

1,900 Frontier innovation businesses	52,000 Frontier innovation employees	£26bn Annual turnover by businesses
--	--	---

By 2030, frontier innovation could grow by 50%, if supported by investment, delivering:

2,500 Frontier innovation businesses	80,000 Frontier innovation employees	£41bn Annual turnover by businesses
--	--	---


Source: WPI Economics

Explore WestTech London

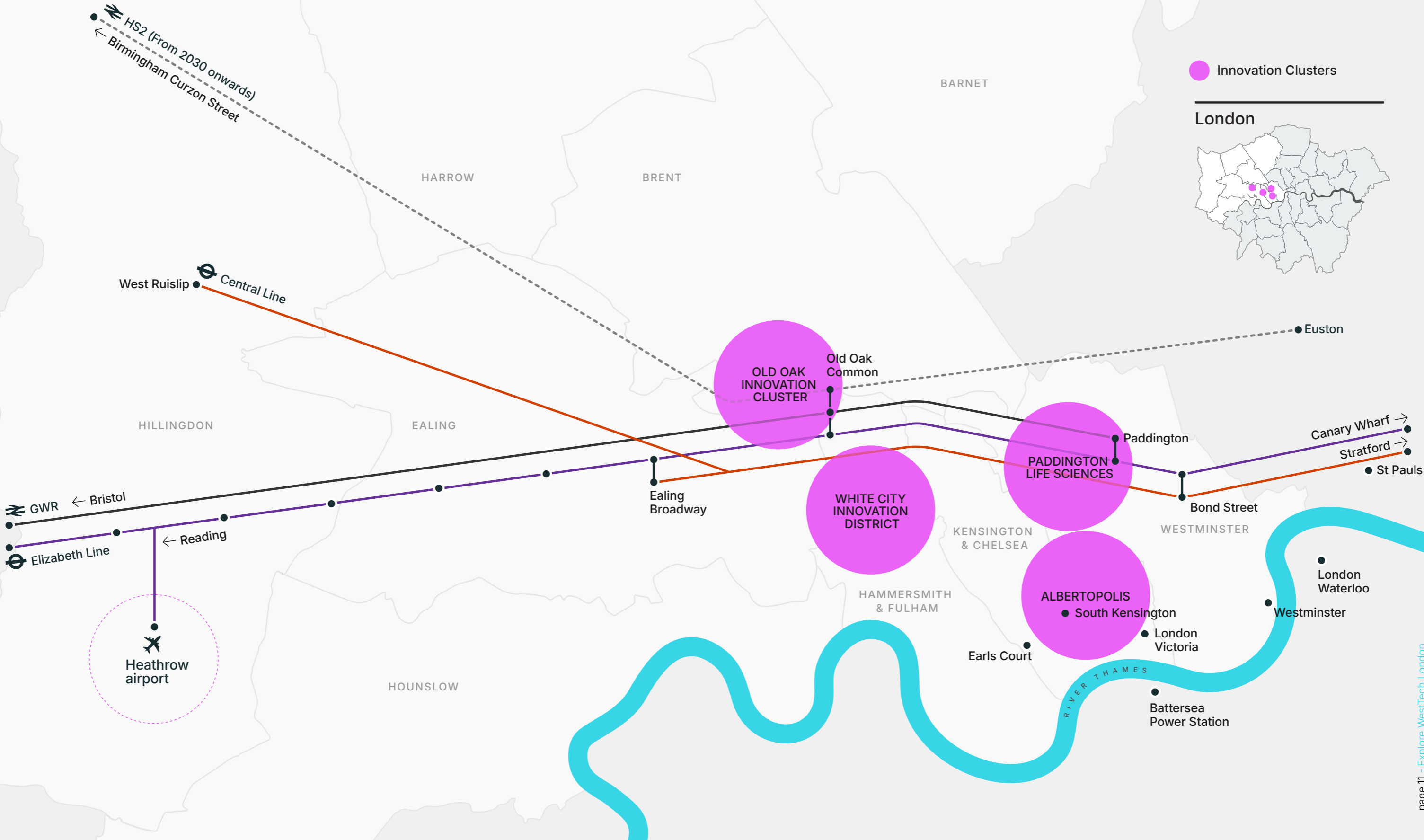
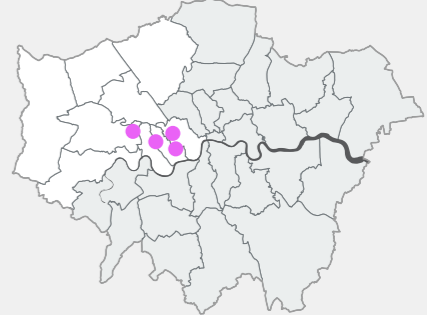
West London is built for innovation

WestTech London is anchored by four major research and innovation clusters – South Kensington’s Albertopolis, Paddington Life Sciences, White City Innovation District and Old Oak Innovation Cluster – and connects a network of science, technology, healthcare and business locations and innovation-led growth areas across West London.

WestTech London is powered by exceptional transport links, deep talent pools and ambitious investment and development pipelines.

 Innovation Clusters

London





Our innovation clusters

White City Innovation District

Created in 2017 through a first-of-its-kind partnership between Imperial and Hammersmith & Fulham Council, White City Innovation District is where world-leading research, high-growth companies and global brands come together to drive breakthroughs in AI, life sciences, climate tech, food tech and digital industries. It is anchored by Imperial's White City Deep Tech Campus.

White City Innovation District is a cornerstone of Upstream London – Hammersmith & Fulham Council's pioneering industrial strategy – and is **powering the success of the 'Innovation Borough'**, attracting both emerging and established businesses and creating new jobs, opportunities to upskill and delivering wider benefits to local communities.

Sector specialisms



Life sciences



Climate tech



Deep tech & AI



Digital media

£6bn

investment raised by firms since 2017

13k+

jobs created in the District since 2017

Connecting ideas, people and resources

Today, White City has become a **centre of gravity for transformative organisations** – offering ambitious businesses the space, infrastructure and partnerships they need to innovate, scale and succeed. Now home to hundreds of companies, White City offers flexible, growth-ready workspace and state-of-the-art laboratories, all in close proximity to world-leading Imperial, **helping to accelerate breakthroughs and translation.**



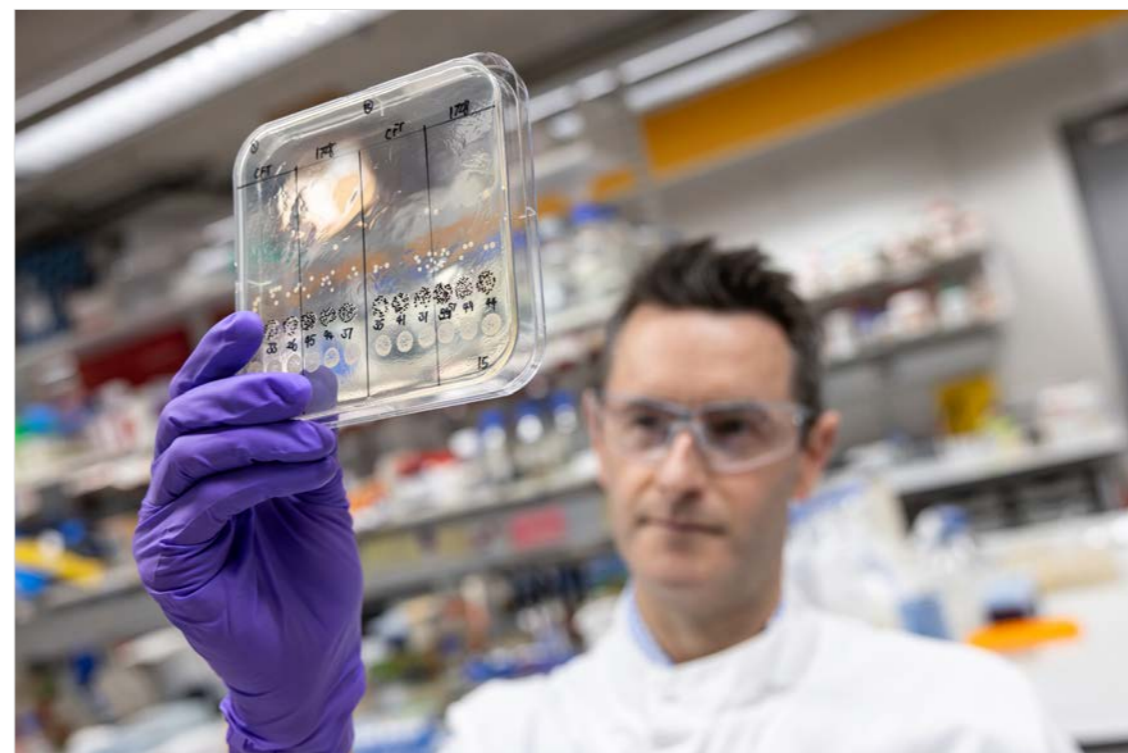
*"Hammersmith & Fulham is now London's fastest-growing economy – we're now producing **more spin-out start-ups than anywhere else in the UK.** We are working with partners, including WestTech London, to continue to grow an economy that directly benefits people's personal and financial well-being."*

Councillor Stephen Cowan
Leader of the London Borough of Hammersmith and Fulham Council



IMPERIAL





Our innovation clusters

Paddington Life Sciences

Paddington Life Sciences is a thriving hub of life sciences businesses centred around St Mary's Hospital. Led by Imperial College Healthcare, a research-led NHS Trust, it connects businesses to the NHS and world-leading research to create a growing community of life sciences and health tech.

The Paddington Life Sciences campus is poised for transformative redevelopment which will accelerate future innovation. The planned redevelopment of St Mary's Hospital – home of the discovery of penicillin – aims to **create connections that drive positive outcomes in healthcare and beyond**, creating a state-of-the-art clinical facility with dedicated spaces for research, education and innovation. The Fleming Centre, a new research and public engagement hub, is part of the wider Fleming Initiative, established jointly by Imperial College Healthcare NHS Trust and Imperial College London, will find equitable solutions to antimicrobial resistance at a global scale.

Sector specialisms

£1.5bn

national economic contribution per annum*

12-15k

high-quality jobs onsite*

*To be delivered by St Mary's redevelopment



Connecting ideas, people and resources

Paddington's excellent transport connections mean London and wider life sciences talent pools are close at hand, and its waterside urban village offers businesses, their employees and the local community the best of London's character and amenities. Paddington Life Sciences is a **dynamic player in the UK's successful and growing life science innovation network**.

Commercial innovators are seeing the benefits of close connection to St Mary's Hospital, Imperial College London and wider pools of life sciences talent and innovation.

"Research and innovation are fundamental to the clinical excellence for which our hospitals are renowned. We are now entering a new era of discovery, at an even more ambitious scale, by maximising the potential of our existing work areas and joining them up with new opportunities. Our wide-ranging partnerships are intended to improve not just healthcare but also health and wellbeing, creating synergies that will boost local education, skills development and employment opportunities."

*Professor Tim Orchard
Imperial College Healthcare NHS Trust*





Our innovation clusters

Albertopolis

South Kensington's Albertopolis has been at the heart of London's cultural and scientific progress for more than 150 years. Today, as a pillar of WestTech London, it is at the intersection of science, discovery, education and engagement.

It is the home of Imperial College London, the world-leading STEMB university, and the site of its main undergraduate and postgraduate campus.

Albertopolis encompasses many of London's leading cultural and scientific institutions, museums and galleries including the Science Museum, Natural History Museum and the V&A. Together, Imperial and the Albertopolis cluster are **inspiring discovery, sparking creativity and nurturing talent.**

#1

Imperial ranked no. 1 university in UK & Europe, QS rankings 2026

21k+

full-time students enrolled at Imperial (2024-5 figures)

Sector specialisms



Science



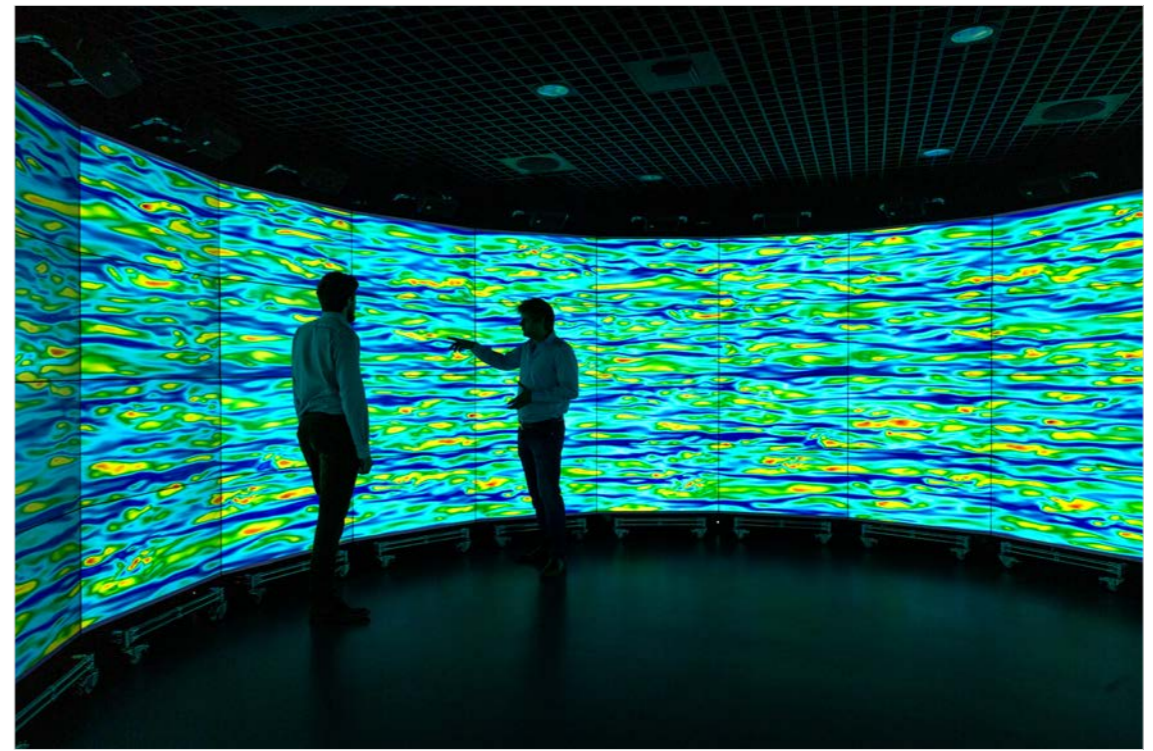
Engineering



Medicine



Business



Connecting ideas, people and resources

Albertopolis anchors one of the **most concentrated innovation districts in the world** and Imperial's South Kensington campus is its scientific engine. The campus brings together cutting-edge laboratories, entrepreneurial hubs, multidisciplinary research centres and a dense community of scientists, clinicians and engineers working side by side.

World-leading departments – spanning Physics, Mathematics, Computing, Aeronautics, Chemical Engineering, Biochemistry, Earth Science, Materials and Engineering – plus the renowned Imperial Business School create a pipeline from scientific discovery to real-world deployment.

This blend of deep science, translational capability and cultural reach positions Imperial as a driving force for WestTech London, **attracting the talent, investment and industry partnerships to accelerate scale and growth.**

*"Albertopolis is where Imperial's scientific ambition meets London's creative energy. Within WestTech London, it gives innovators a place to **connect, collaborate and scale ideas that matter.** Its unique concentration of talent, research power and cultural institutions accelerates breakthroughs that strengthen the entire WestTech vision."*

Hugh Brady, President, Imperial



Our innovation clusters

Old Oak Innovation Cluster

Old Oak Innovation Cluster is an emerging district where innovation-led regeneration is creating unparalleled opportunities for cutting-edge science, deep tech businesses and local communities.

Old Oak is transforming west London with **landmark housing and infrastructure developments**, including the new Old Oak Common station for HS2 which will deliver unrivalled connectivity to central London and other major UK cities, including innovation hubs in Birmingham, Bristol and the Southwest.

The Cluster is part of the Old Oak and Park Royal Opportunity Area, one of the UK's most important and exciting regeneration projects, led by the Old Oak and Park Royal Development Corporation (OPDC). The Old Oak and Park Royal Opportunity Area spans land in three London boroughs – Ealing, Brent and Hammersmith & Fulham – and is supported by Ealing Council, Hammersmith & Fulham Council and Brent Council.

The visionary programme includes **landmark housing, infrastructure and commercial development**, supporting the adjacent industrial powerhouse of Park Royal – the UK's largest industrial estate, which employs more than 40,000 people – and is anchored by a £10 billion development pipeline and a rare 70-acre, publicly controlled brownfield site in a prime Zone 2 location.

56,000

Jobs to be created via Old Oak & Park Royal development

£10bn

Development pipeline

Connecting ideas, people and resources

Imperial is a long-term investor, owner and developer in the Old Oak area, having developed its first buildings in the area in 2015 and with landholdings ownership which span more than 17 acres. This includes Graph Works, which offers scaleup space for high growth companies working in prototyping, pilot manufacturing, Good Manufacturing Practice and advanced manufacturing, and 1 Portal Way which is being repurposed to offer 55,000 sq ft of fully fitted, affordable lab and office space designed to meet the needs of scaling science and tech firms.

Imperial has ambitious plans which will support **c.4 million sq ft of additional development** which includes the creation of new lab, office and manufacturing spaces for innovative businesses, new homes across various tenures, including student accommodation, as well as new retail, amenities and services, and green public spaces.

Sector specialisms



Science



Deep tech



Advanced manufacturing



Climate tech

*"WestTech London is a **game-changing opportunity to drive growth** across all of our seven towns and to capitalise on Ealing's great connectivity, London's largest concentration of industrial land and the borough's cluster of high-tech and creative businesses."*

Councillor Peter Mason
Leader of Ealing Council

Key sector success stories





Zhipp's story

From spinout to sale

Imperial College London spin-out Zhipp was founded in 2019 by Professor Sir Stephen Bloom to commercialise his GLP-1 and amylin-based peptide innovations – discoveries that are the foundation of today's blockbuster weight-loss drugs.

Zhipp used the library of gut hormone-mimicking peptides, created at Imperial, to create its lead candidate. In 2023, US biotech Metsera acquired White City Innovation District-based Zhipp. In 2025, Pfizer acquired Metsera at a valuation of up to \$10 billion, giving Pfizer full access to Zhipp's obesity drug candidates, and accelerating their path into global obesity treatment set to transform countless lives.

The WestTech London effect

Zhipp's journey from Imperial Incubator to acquisition has been enabled and supported by the Imperial ecosystem across Hammersmith Hospital, the MRC Laboratory of Medical Sciences and White City Campus, where Imperial's ability to conduct research from bench to bedside played a crucial role in turning discoveries into drugs. Imperial's world-class multidisciplinary research, facilities and translation expertise [underpinned Zhipp's game-changing innovations](#) that are now central to global pharma giant Pfizer's obesity drug pipeline.

Innovation to impact

Up to \$10bn

acquisition of Metsera by Pfizer in 2024

20k

library of gut hormone-mimicking peptides built at Imperial

14.1%

average weight loss at 28 weeks in phase 2b trial of MET-097i

Solena Materials' story

From startup to scaleup

Solena Materials is pioneering AI-designed, plastic-free, protein-based fibres that can be custom-engineered for luxury, premium athleisure and high-performance textiles.

Following a £5.1 million seed round in 2025, Solena is now accelerating towards commercialisation with its move to a new pilot facility at Grapht Works, part of the emerging Old Oak Innovation Cluster. This advanced manufacturing location provides the **essential infrastructure to scale production** ahead of Solena's planned 2028 commercial launch. Growing at the heart of Imperial's innovation ecosystem and WestTech London, Solena is strengthened by access to world-leading research, talent and industry partners.

The WestTech London effect

For this exciting Imperial spinout, the fabric of its success is the strength of the innovation ecosystem offered by WestTech London. Starting in White City and scaling from Imperial Incubator to I-HUB, where it was supported by the London BioFoundry, Solena Materials has benefited from world-class expertise and deep tech infrastructure at every stage.

With its move to Old Oak Innovation Cluster, Solena Materials is now progressing **rapidly to commercial launch** within a high-growth environment that connects it to the talent, research and the HS2 growth corridor the business needs to achieve maximum market impact.

Innovation to impact

£5.1

seed funding round

£8.2m

total funding

2 tonnes

per year fibre production capacity at Grapht Works



Polymateria's story

From discovery to delivery

Polymateria is the creator of a revolutionary biotransformation technology aimed at tackling the global plastic pollution crisis. Its proprietary technology can break down plastics safely, even if they escape into the environment, leaving no microplastics.

The company's Lifecycle innovation is the world's first self-destructing plastic, designed to safely return to nature after a year if not recycled first. Polymateria's next-generation sustainable products range from drinking cups, straws, confectionery wrappers and flower sleeves to shrink wrap. In 2020, Polymateria became the first in the world to achieve certified full biodegradation of plastic in the natural environment. In 2021, it secured a deal worth almost \$100 million with Taiwan's Formosa Plastics for Polymateria's biotransformation additive to be integrated into Formosa's products.

The WestTech London effect

Polymateria began life at Imperial's award-winning White City Incubator in 2015, benefitting from access to state-of-the-art facilities and an entrepreneurial community that has been central to its success – including securing a £20m Series B funding round in 2023. Now based at an expanded facility at Imperial's White City Deep Tech Campus, Polymateria is combining **advanced materials science with global partnerships to scale credible, safe and commercially viable alternatives to persistent plastic waste** – with potentially world-changing impacts.

Innovation to impact

£20m

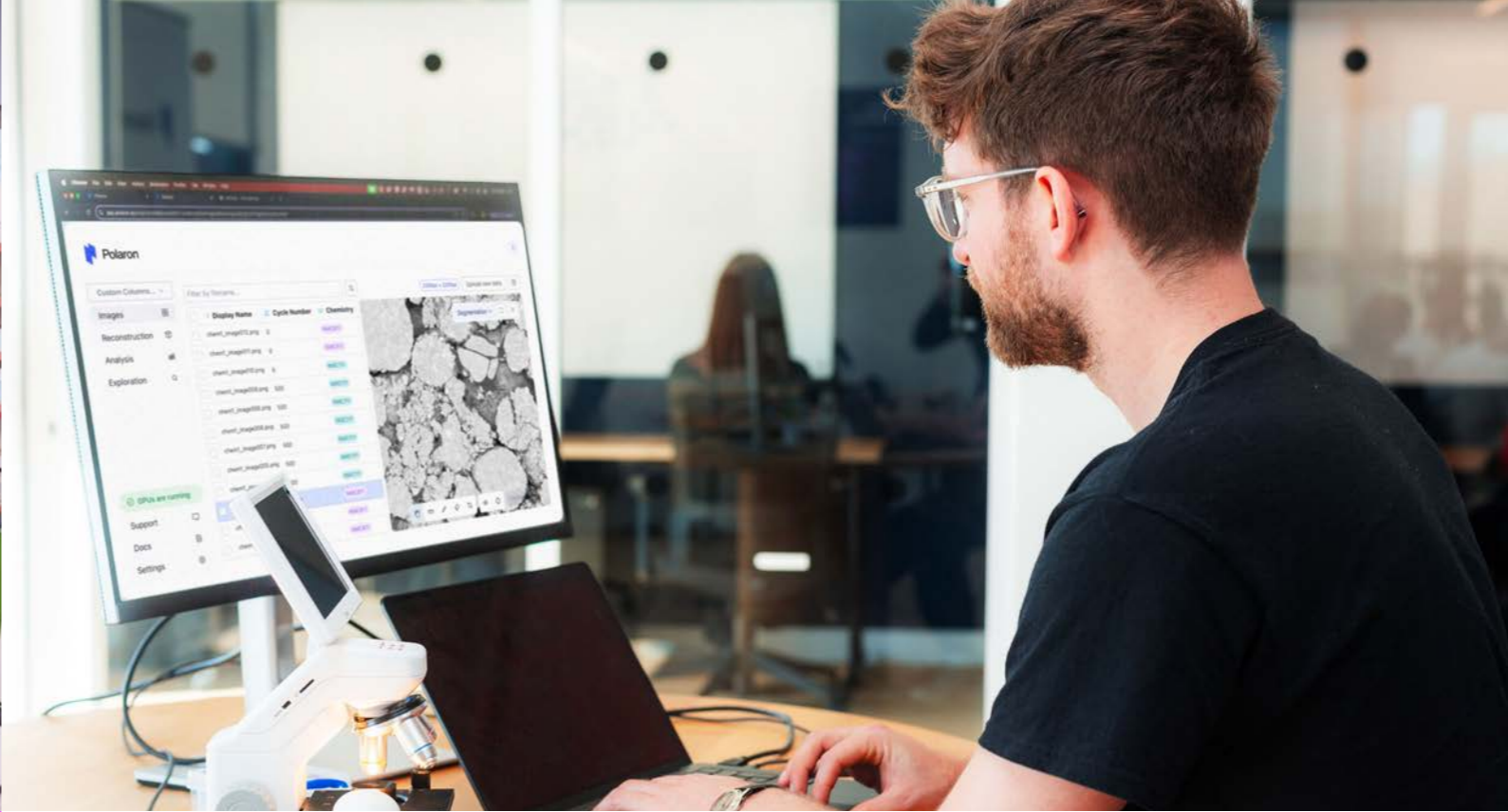
Series B funding round

£58m+

total funding

\$100m

commercial deal with Taiwan's Formosa Plastics



Polaron's story

From idea to impact

Polaron is rapidly reshaping how advanced materials are engineered. Harnessing AI models to read microscopic image data and slash development cycles from years to hours, the team is unlocking transformative breakthroughs in EV batteries, metal alloys and ceramics – helping to decarbonise industry and support the transition to renewable energy.

Fresh from winning the prestigious Manchester Prize, Polaron raised £6.3 million to accelerate deployment of its technology with major industrial partners. Born in Imperial's Dyson School of Design Engineering in Albertopolis, the company remains tightly connected to Imperial's research talent, academic collaborators and specialist pipelines. Now accelerating roll-out of its generative design tools, Polaron is moving from lab-born innovation to global industrial impact.

The WestTech London effect

Polaron's rise has been powered by the strength of WestTech London's innovation ecosystem. Rooted in Albertopolis and closely connected to Imperial's Dyson School of Design Engineering, the company is drawing on world-class research, talent and interdisciplinary expertise to accelerate its technology. Proximity to Imperial's academic networks, specialist facilities and pipeline of PhD collaborators has enabled Polaron to move at remarkable speed. The team is now poised to play a defining role in the future of materials manufacturing.

Innovation to impact

£6.3m

Series B funding round

£1m

Manchester Prize win for pioneering use of generative AI in materials science

10%

improvement in battery cell energy density shown in 2024 paper

Convening West London

WestTech London is uniting the institutions and individuals capable of turning frontier innovation into national advantage.

By bringing together leading universities and research institutions, local government, industry partners, investors, developers, and key strategic partners, WestTech London is **building a collaborative network which can enable the translation of ideas from lab to market.**

Together, WestTech London stakeholders provide the infrastructure, insight, talent and commercial pathways for scaling breakthrough technologies in frontier sectors.

When these groups connect, collaborate and co-create, WestTech London becomes a shared engine of opportunity, delivering benefits locally, nationally and globally.

Through this collaboration, WestTech London will strengthen the UK's competitiveness, attract global capital and accelerate high-growth sectors to boost productivity and create skilled jobs, driving long-term economic impact and reinforcing the UK's position as a world leader in science and technology.

Discover more

Whether you're exploring new opportunities, looking to collaborate, co-locate or invest, or simply want to learn more about WestTech London, connect with us today.

Email

westtechlondon@imperial.ac.uk

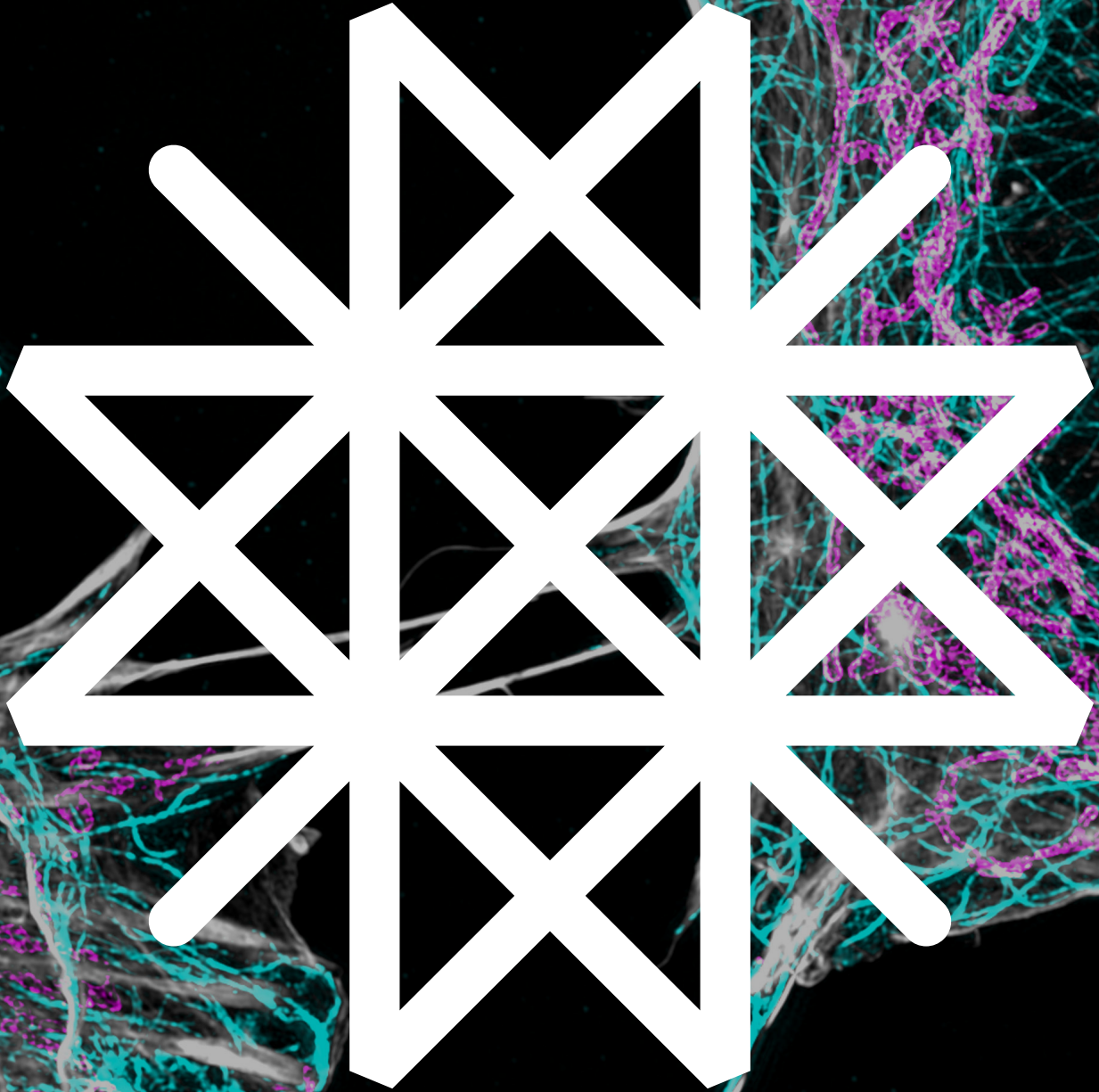
Website

westtechlondon.com





WESTTECH
LONDON



Empowering the future of innovation

westtechlondon.com