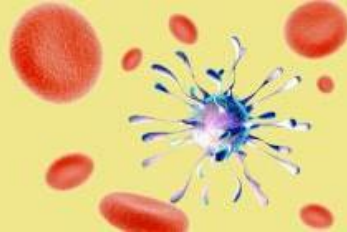


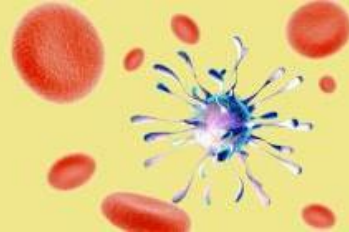
Medicine and Life Sciences



Week One

This is a sample timetable for the Medicine and Life Sciences Global Summer School 2026.

Week 1: Medicine and Life Sciences							
	Monday	Tuesday	Wednesday	Thursday	Friday	Saturday	Sunday
Morning	Arrivals 11.00–14.00	Medicine 09.30–12.30	Clinical Skills at St Mary's Hospital 09.30–12.30	Life Sciences 09.30–12.30	Life Sciences 09.30–12.30	Brighton Day Trip (Groups A and B) 09.00–19.00	Explore South Kensington and sports activities (Groups A and B) 09:30–16.00
Afternoon	Registration, induction, and orientation 14.00–16.00 Welcome talk 16.00–17.00	Medicine 13.30–14.00 Masterclass 16.45–17.45	Clinical Skills at St Mary's Hospital 13.30–16.30	Life Sciences 13.30–16.30 Masterclass 16.45–17.45	Life Sciences 13.30–16.30		
Evening	Dinner and icebreaker activities 19.00–21.30	Sports and on campus activities (Groups A and B) 18.00–20.00	Theatre trip Lion King (July only) Wicked (August only) (Group A) 18.00–23.00 Tenpin bowling and dinner (Group B) 17.00–21.00	Sports and on campus activities (Groups A and B) 18.00–20.00	Sightseeing bus tour (Groups A and B) 17.30–20.30		Talent Show (Groups A and B) 19.00–22.00



	Monday	Tuesday	Wednesday	Thursday	Friday
Morning	Welcome 09.30–12.30	Project work 09.30–12.30	Project work 09.30–12.30	Prepare for presentations 09.30–12.30	Finale brunch and departures 08.30–13.00
Afternoon	Project work 13.30–16.30	Project work 13.30–16.30 Masterclass 16.45–17.45	Project work 13.30–16.30	Presentations 13.30–16.30	
Evening	River Thames boat party (Groups A and B) 17.00–22.00	Sports and on campus activities (Groups A and B) 18.00–20.00	Tenpin bowling and dinner (Group A) 17.00–21.00 Theatre trip Lion King (July only) Wicked (August only) (Group B) 18.00–23.00	Finale celebration (Groups A and B) 18.00–23.00	

Please note:

- This timetable is indicative and subject to change. A full timetable including catering times, class times, and locations, will be available on the Guidebook app closer to the programme start date.
- Students will be split into two groups when participating in the social activities. Both groups will take part in the same activities, at different times. Groups will be confirmed after students have registered for the programme.