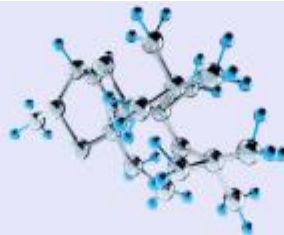


This is a sample timetable for the Chemistry Global Summer School 2026.

| Week 1: Chemistry |   |  |   |  |   |  |   |
|-------------------|---|--|---|--|---|--|---|
|                   | Monday  | Tuesday  | Wednesday   | Thursday   | Friday  | Saturday   | Sunday  |
| <b>Morning</b>    | Arrivals<br>11.00–14.00   | Simulation and coding<br>in chemistry<br>09.30–12.30   | Lecture + activities on<br>basic synthetic<br>chemistry<br>09.30–12.30  | Lecture + activities on<br>light and its interaction<br>with matter<br>09.30–12.30                         | Group 1 - Chemical<br>Kitchen<br><br>Group 2 - Medicinal<br>chemistry activities<br>09.30–12.30 | Brighton Day Trip<br><br>(Groups A and B)<br>09.00–19.00 | Explore South<br><br>Kensington and sports<br>activities<br>(Groups A and B)<br>09:30–16.00 |
| <b>Afternoon</b>  | Registration, induction,<br>and orientation<br>14.00–16.00<br><br>Welcome talk<br>16.00–17.00 | Computation and<br>automation in<br>chemistry<br>13.30–16.00<br><br>Masterclass<br>16.45–17.45 | Synthetic Practical<br>13.30–16.30  | Measurement practical<br>Building Lego<br>spectrometers<br>13:30 - 16:30<br><br>Masterclass<br>16.45–17.45 | Group 2 – Chemical<br>Kitchen<br><br>Group 1 – Medicinal<br>chemistry activities<br>13.30–16.30 |  |   |
| <b>Evening</b>    | Dinner and icebreaker<br>activities<br>19.00–21.30  | Sports and on campus<br>Activities<br>18.00 - 20.00  | Theatre trip<br>Lion King (July only)<br>Wicked (August only)<br>(Group A)<br>18.00–23.00<br><br>Tenpin bowling and<br>dinner<br>(Group B)<br>17.00–21.00 | Sports and on campus<br>activities<br>18.00 - 20.00  | Sightseeing bus tour<br>(Groups A and B)<br>17.30–20.00   |  | Talent Show<br>(Groups A and B)<br>19.00–22.00  |



|                  | Monday   | Tuesday   | Wednesday  | Thursday  | Friday                                      |
|------------------|--|---|--|---|---|
| <b>Morning</b>   | Welcome<br>09.30–12.30                                     | Project work<br>09.30–12.30   | Project work<br>09.30–12.30  | Prepare for presentations<br>09.30–12.30              | Finale brunch and departures<br>08.30–13.00 |
| <b>Afternoon</b> | Project work<br>13.30–16.30                                | Project work<br>13.30–16.30<br><br>Masterclass<br>16.45–17.45         | Project work<br>13.30–16.30  | Presentation<br>13.30–16.30                           |   |
| <b>Evening</b>   | River Thames boat party<br>(Groups A and B)<br>17.00–22.00 | Sports and on campus<br>activities<br>(Groups A and B)<br>18.00–20.00 | Tenpin bowling and dinner<br>(Group A)<br>17.00–21.00<br><br>Theatre trip<br>Lion King (July only)<br>Wicked (August only)<br>(Group B)<br>18.00–23.00 | Finale celebration<br>(Groups A and B)<br>18.00–23.00 |   |

Please note:

- This timetable is indicative and subject to change. A full timetable including catering times, class times, and locations, will be available on the Guidebook app closer to the programme start date.
- Students will be split into two groups when participating in the social activities. Both groups will take part in the same activities, at different times. Groups will be confirmed after students have registered for the programme.