

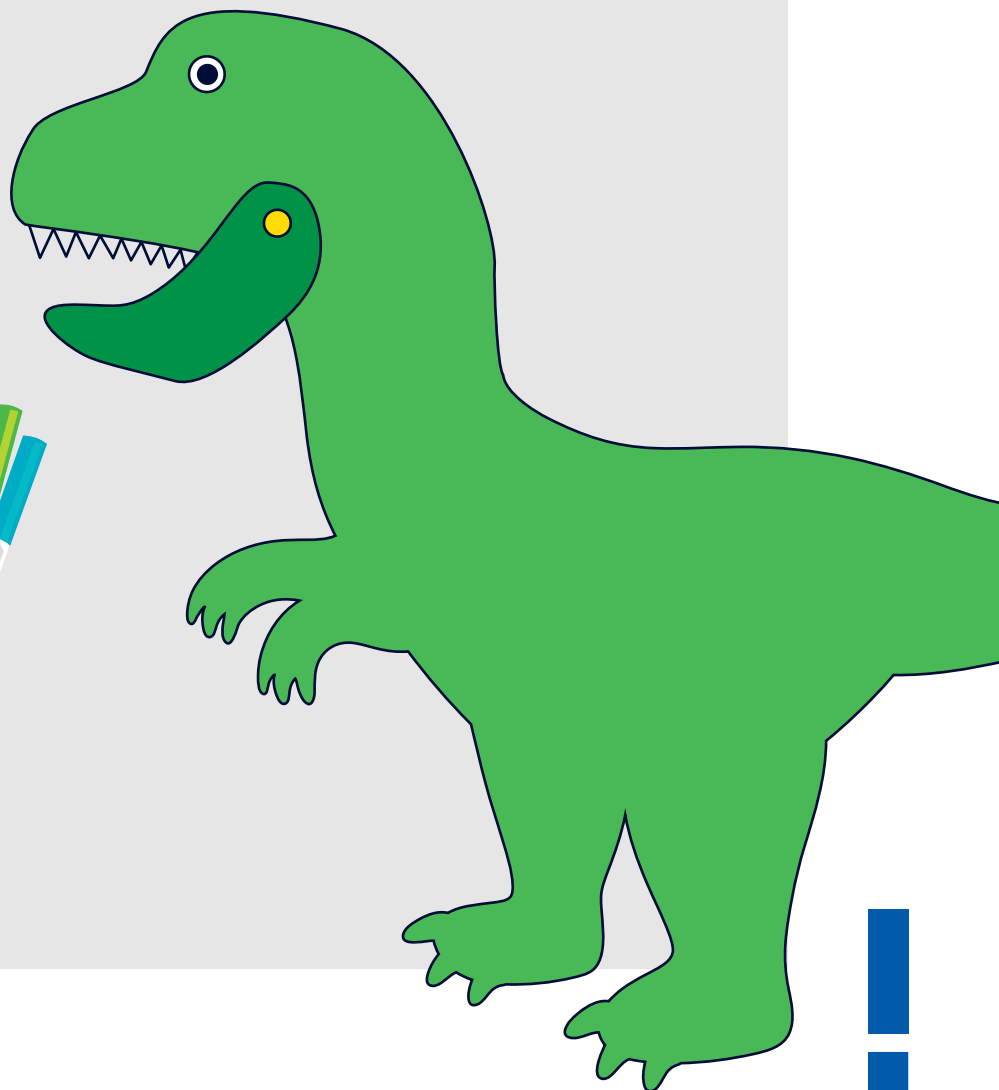
BITING DINOSAURS

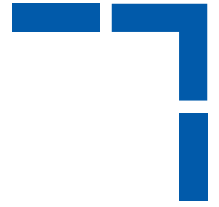
In this activity we are going to make some model dinosaurs. So that your dinosaur can eat a tasty meal we are going to use paper fasteners to make a joint that will **rotate and turn**. This will allow your model to bite and move.



You will need:

- Scissors
- Split pins
- Colouring pens or pencils
- Glue (if you use the template)
- White card

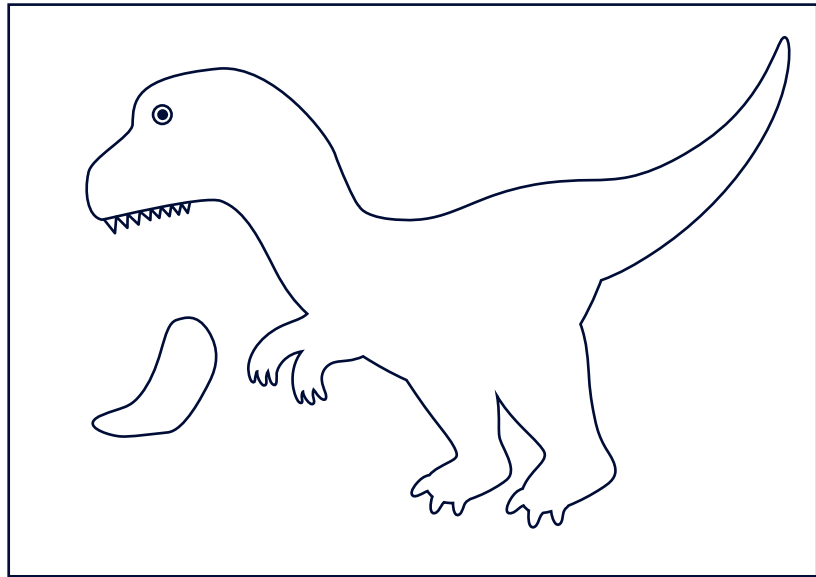




→ STEP 1

Draw a dinosaur but draw the jaw **separately**.

Some of the jaw will need to **overlap** with the head of the dinosaur when finished.



→ STEP 2

Carefully cut out the dinosaur and jaw piece using scissors.

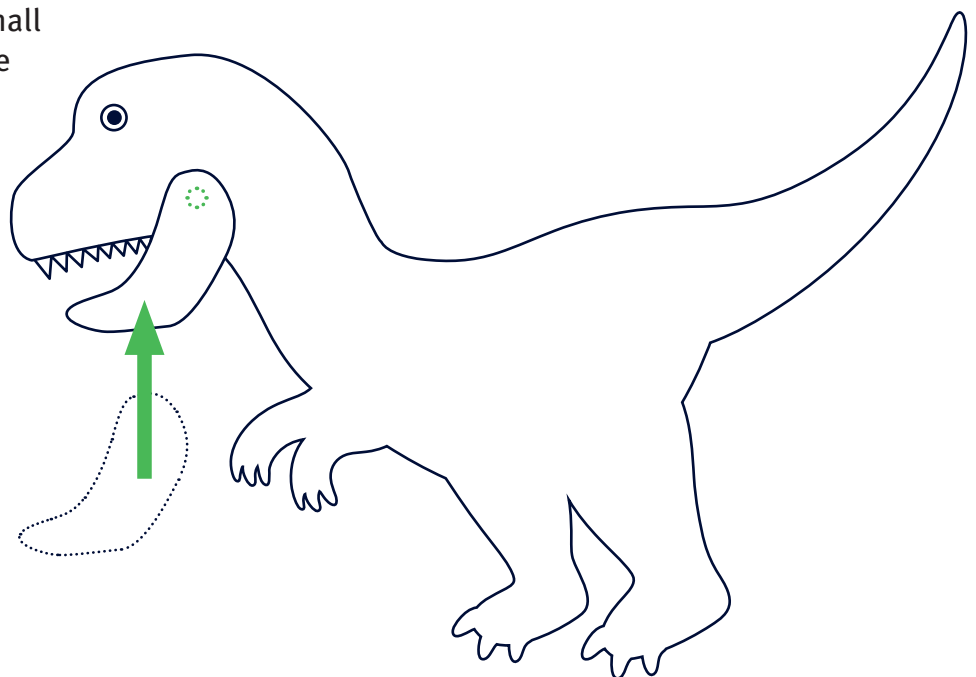


→ STEP 3

Place the jaw where you want it.

With a pen carefully make a small hole through the overlap where you want the joint to go.

This **must** go through both pieces of paper/card.

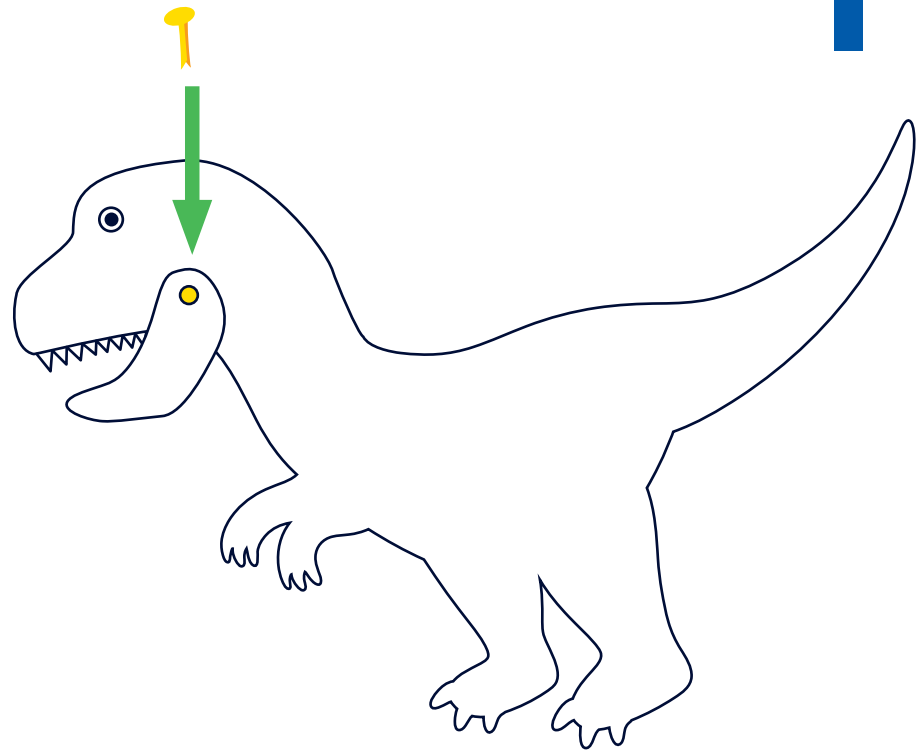




→ STEP 3

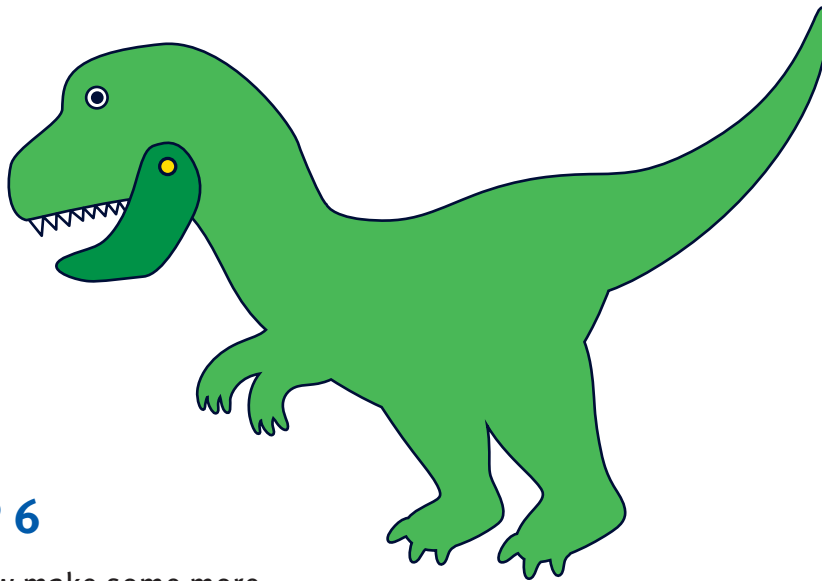
Push the **paper fastener** through the hole and open up the arms on the other side to connect the jaw up to the mouth.

Now the jaw can rotate and the dinosaur **can bite**.



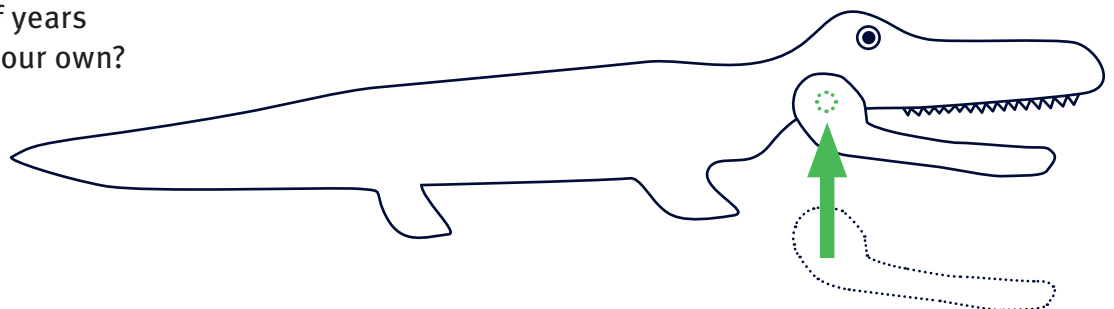
→ STEP 5

Use some colouring pens or pencils to colour in the dinosaur.



→ STEP 6

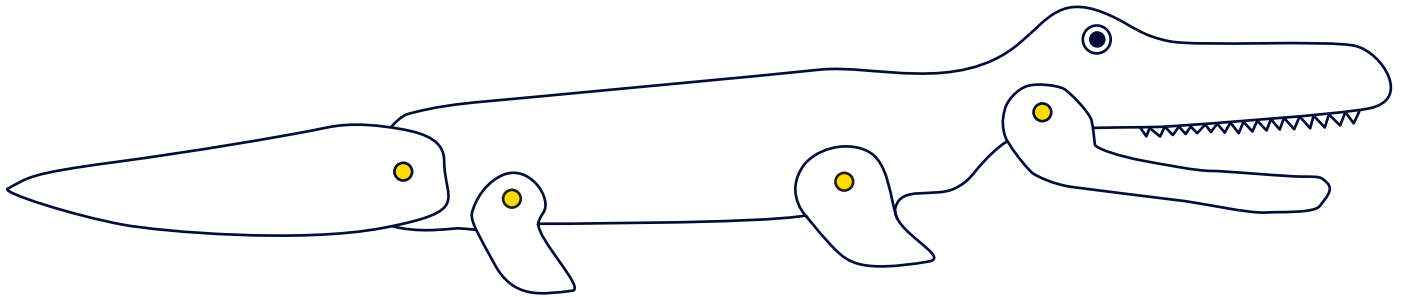
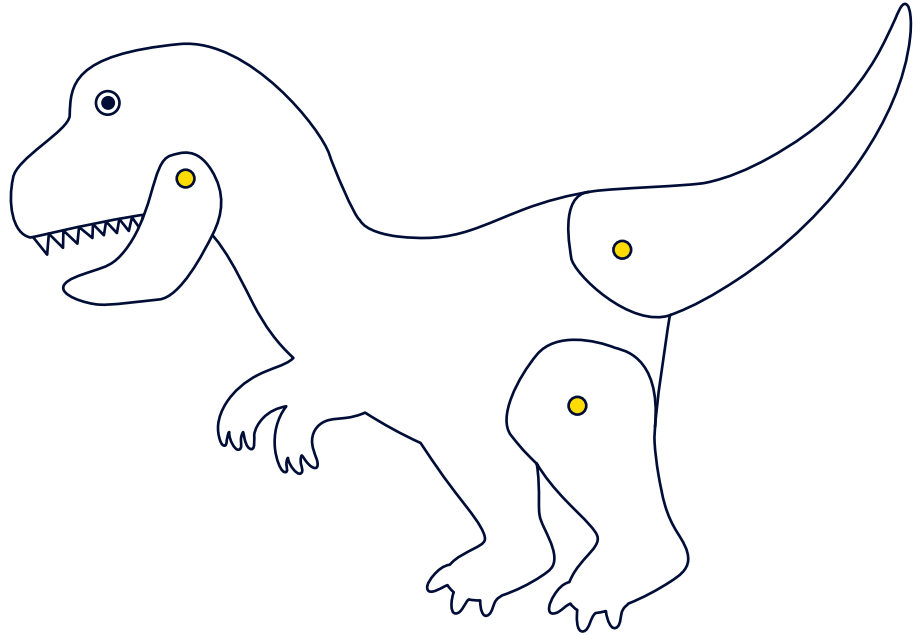
You can now make some more prehistoric friends, here is a Deinosuchus, a giant crocodile that lived millions of years ago, can you make your own?

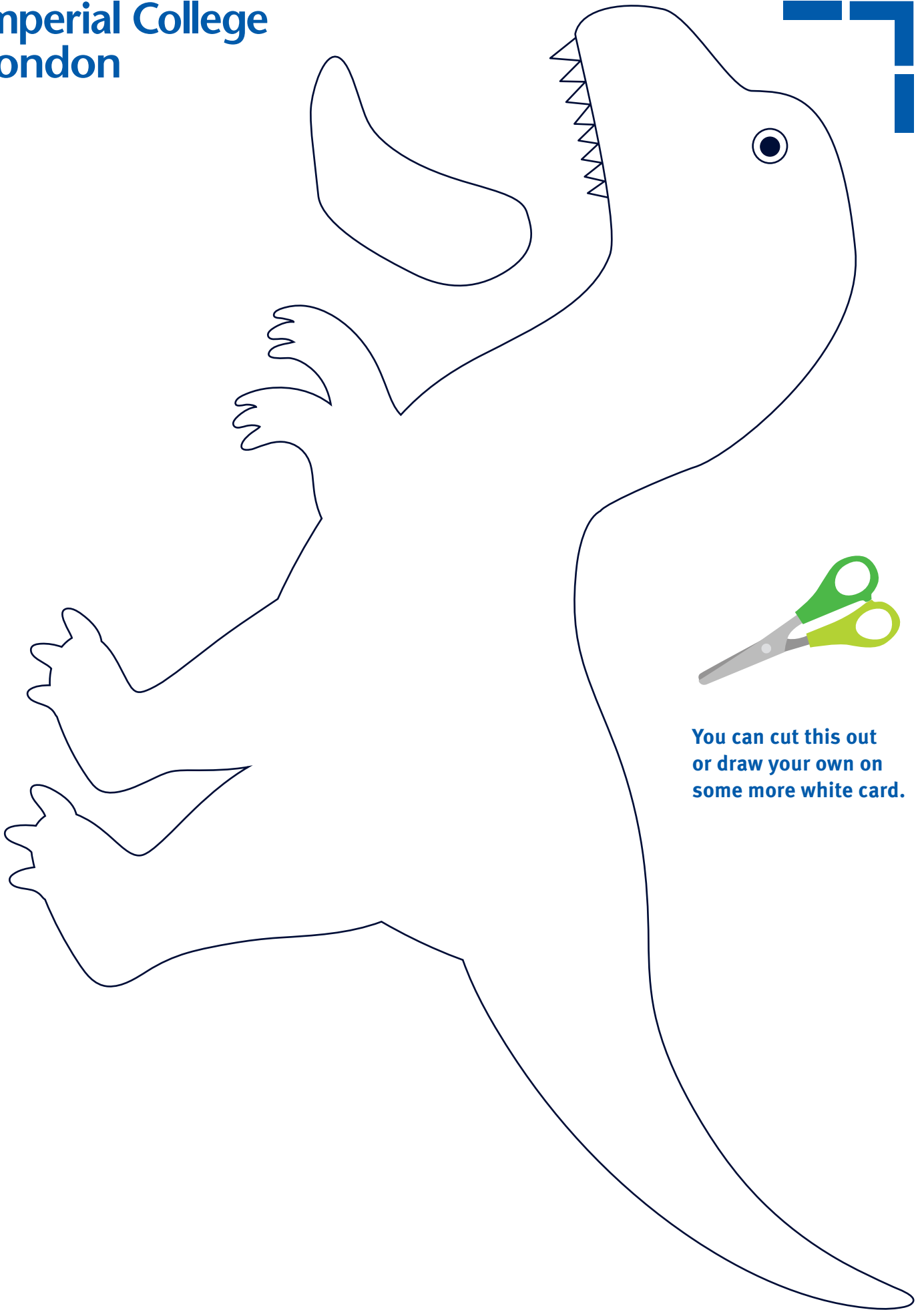




→ **STEP 7**

You can give your dinosaur more joints using extra split pins!





**You can cut this out
or draw your own on
some more white card.**

