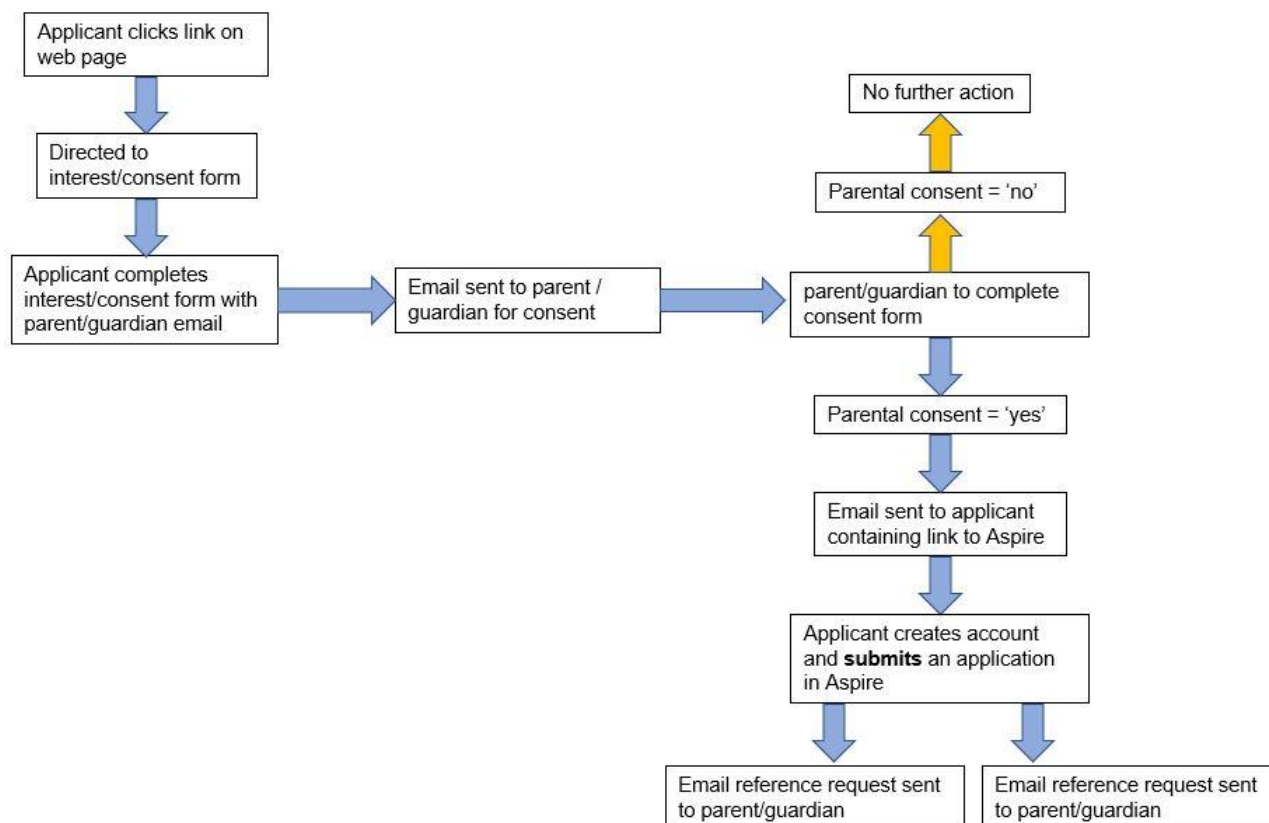


**Q. What is the application process for STEM Scholars (under 13 programme)?**



**Q. Do I need to fill in the parent/guardian reference?**

A. We expect all parents / guardians to verify the details in their child's application. The supporting statement section is optional however it would be helpful if you could include details on any specific circumstances that may have affected your child's education.

**Q. What is the deadline to submit my reference by?**

A. The deadline to submit all references is 23.59 on 26 February 2020.

**Q. How long does it take to write the reference?**

A. About 5-10 minutes.

**Q. What information do I need to fill in the reference for my child?**

A. To access the reference you will need to know your child's date of birth.

**Q. Can I write part of the reference and come back to it later?**

A. No, your answers won't be saved until you hit submit at the end. Please note, your session will time-out after 20minutes of inactivity and you will have to start again.

**Q. How will my child get to/from the programme?**

A. You will have to arrange your own travel and we do not reimburse this.

**Q. Are there any costs associated with the programme?**

A. No. But please see the question above about travel.

**Q. Are your staff trained to be working with children?**

A. Yes, all staff who work alongside the young people on our courses have a valid enhanced DBS check, and have been vetted to ensure their suitability to work with children.

We also have staff who have been trained in dealing with mental health issues in young people and they are contactable both prior and during the course. If you have any concerns, please get in touch by phone on 07566 950 957/8.

**Q. Will my child be safe during the programme?**

A. The campus including accommodation has 24/7 security staff. A full Health and Safety briefing will be carried out at the start of the course and all of the activities are risk assessed.

**Q. What provision is there for children with additional needs?**

A. All of our programmes are inclusive and we strive to meet all of our student's needs. If your child has any additional needs, we would work closely with you to best support your child. Please contact us if you would like to discuss anything further.

**Q. What if my child gets ill during the programme?**

A. Most of the staff working on our programmes, and all of the security team, are first aid trained. If your child requires further medical attention, we will contact you.

**Q. Can I visit my child during the programme?**

A. To maintain the safety and security of all of the young people on our programmes, we do not allow external visitors except during the showcase on the final day.

**Q. What if I need to drop something off for my child?**

A. Please contact us to make arrangements using the contact details in the Joining Instructions which will be sent to your child two weeks prior to the programme.

Please note, if you have any further questions or need to inform us about your individual circumstances, please contact us on [outreach.scienceactivities@imperial.ac.uk](mailto:outreach.scienceactivities@imperial.ac.uk)