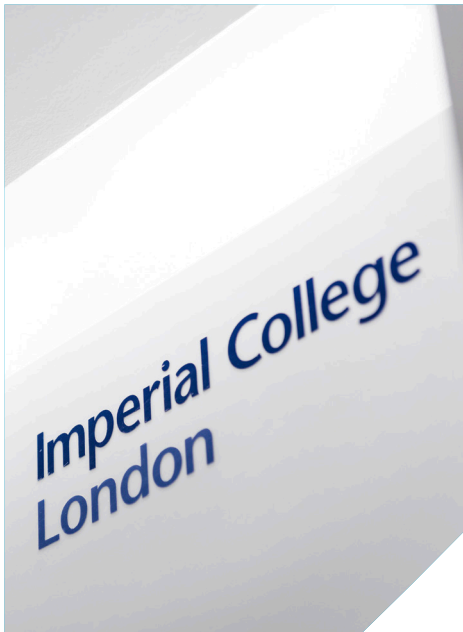


**Imperial College  
London**

# Study an online Master's in Patient Safety

Course prospectus

**INSTITUTE OF  
GLOBAL HEALTH  
INNOVATION**



## Contents

---

- 1 Postgraduate study at IGHI**
- 2 MSc Patient Safety**
  - 2 MSc Patient Safety: Course overview
  - 3 Module description
  - 5 Student and staff stories
  - 6 Meet the course directors
  - 6 Study qualification
  - 7 Future opportunities
- 8 Accelerating your career**
- 9 FAQs**

## Postgraduate study at IGHI

---

Imperial College London is a world-class university with a focus on scientific subjects, which makes it truly unique. Imperial's degrees are highly valued by employers across the world due to its academic excellence and our consistent ranking among the top 10 universities in the world. Studying with us, you can benefit from the world-leading teaching and research within Imperial's community and professional development for career success.

The Institute of Global Health Innovation is one of Imperial's Global Challenge Institutes. We're working towards a future where healthcare is better, safer and more equitable across the globe. Our world-class educational programmes are helping us achieve our vision, by nurturing the next generation of leaders in healthcare. Our courses are suitable for professionals working in healthcare or allied with healthcare systems, benefitting people from a wide range of backgrounds. Through a blend of teaching from globally renowned experts in the field, engagement with novel research and the opportunity to translate your learnings into practice, we aim to equip you with the skills and knowledge to advance in a range of career directions within the healthcare realm.

Our programmes will engage you with the most critical, challenging, and innovative topics in the healthcare industry, which are fundamental for achieving safer, efficient and more effective healthcare systems. The MSc Patient Safety is delivered with a focus on globally relevant practice, considering the implications of patient safety under global crises and the delivery of innovation in low-resource settings.

Studying with us, you'll benefit from our flexible teaching and learning approaches that enable you to balance your studies and work. Having undergone recent digitisation and refreshment, this fully online course employs a range of engaging online learning methods. Benefitting from anytime-anyplace access to course materials, you'll learn and grow your network through innovative group-working exercises combined with live teaching sessions with world-leading academics.

To find out more about what learning with us looks like, continue reading for information on how the programme is structured, the practical skills and knowledge you'll take away, and the doors our course will open for you.



### Programme Board

**Prof The Lord Ara Darzi** (Director, Institute of Global Health Innovation)

**Prof Brendan Delaney** (Programme Director)

**Dr Ana Luisa Neves** (Deputy Director)

# MSc Patient Safety: Course overview

The MSc Patient Safety is designed to provide you with the skills to improve the safety and quality of care. With evolving complexity in healthcare, patient safety is fundamental to delivering health services. This programme aspires to develop global leaders and change-makers in patient safety.

Through this programme you will gain insights into the global context of healthcare, drawing upon a broad range of expert perspectives from academia, healthcare and industry. You will explore themes including safety and sustainability, global health innovation, interprofessional practice, equality and diversity, and

societal impact. You will also learn about the interconnections between health systems, policy, innovation and leadership, exploring how this knowledge can be translated and applied through a research study you'll complete to address a patient safety challenge.

Throughout the programme, you will be encouraged to consider your own practice, recognising that even in well-developed health systems, affecting change is demanding. We welcome UK and international health professionals to join us, and as the MSc is delivered fully online, it is easily accessible to students globally.

# Module description

## **Module 1: Health Systems and Policy**

This module helps you understand the building blocks of the health system, such as financing systems, human resources, information policy, service delivery, and leadership and governance. It shows how an understanding of these domains, and their interrelatedness, should inform the design of effective policies, and ensure that resources are used wisely.

## **Module 2: Improvement in Practice**

This module provides you with a deep understanding of rigorous scientific but practical patient safety and quality improvement principles and methods. You will apply these concepts to real-world safety and quality problems through case studies, simulation, and virtual workshops, as well as to challenges faced by yourself or your own organisation. It also serves as an introductory module for the whole programme.

## **Module 3: Social Impact and Patient Safety**

This module helps you develop a detailed understanding of the social impact of patient safety and related academic theories, including an understanding of the attitudes towards and models of patient involvement.

## **Module 4: Safer Systems**

This module takes a holistic, systems approach to patient safety and quality improvement. Through a range of exercises, case studies and learning activities, you will develop your understanding of how systemic and organisational approaches to quality and safety, including contextual factors, such as organisational processes and culture, can influence outcomes. Theories for the analysis, simulation and evaluation of systems are linked to real-world healthcare examples.



## Module 5: Innovation in Healthcare

Health policy makers are often criticised for their inability to stimulate or comprehend innovation. This module attempts to address this gap by considering the principles of innovation in healthcare, how innovation comes about, the role of different sectors and the health policy implications of future innovation.

## Module 6: Decision Making

This module equips you with an understanding of medical decision making. You will be familiarised with medical decision making as a quantitative field of study, as well as a study of the psychological processes underlying judgement and decision making.

## Module 7: Human Factors in Organisations

This module introduces you to human factors within healthcare and across other industries. In addition to gaining an understanding of the context, background and historical perspective of the field, you will also gain practical tools and methods that have been applied in human factors.

## Module 8: Leadership in Healthcare

Through this module you will develop your insights into the kind of leadership required to tackle our most vexing challenges in health care. You will build knowledge of what is required to exercise effective leadership and to successfully deliver reforms in healthcare on an institutional, regional, national and international stage.

### The dissertation module (Patient Safety)

Students pursuing a master's level qualification on our Patient Safety programme complete an independent research project as part of their studies. Research projects can be undertaken at your place of work, under the supervision of an Imperial academic.

“Students enrolled on the full MSc programme will complete a 10,000 word dissertation in parallel with their second year modules. The dissertation and accompanying study will research, diagnose and develop recommendations for a field-based health system, health policy or patient safety case study, issue, problem or promising development. The dissertation is organisation-specific and focuses on challenges and issues that the organisation must address to move forward, improve, innovate and transform.

The dissertation module includes an introductory primer where students work on developing their dissertation topic in one-on-one advisor meetings. The Primer is designed to help students feel confident and prepared to enter the dissertation year. Another three taught tutorials guide the development of the first three chapters of the dissertation and then students move over into the self-paced half of the year, during which they collect data and write up their study findings.”

- Ruth Black,  
Dissertation Module Lead

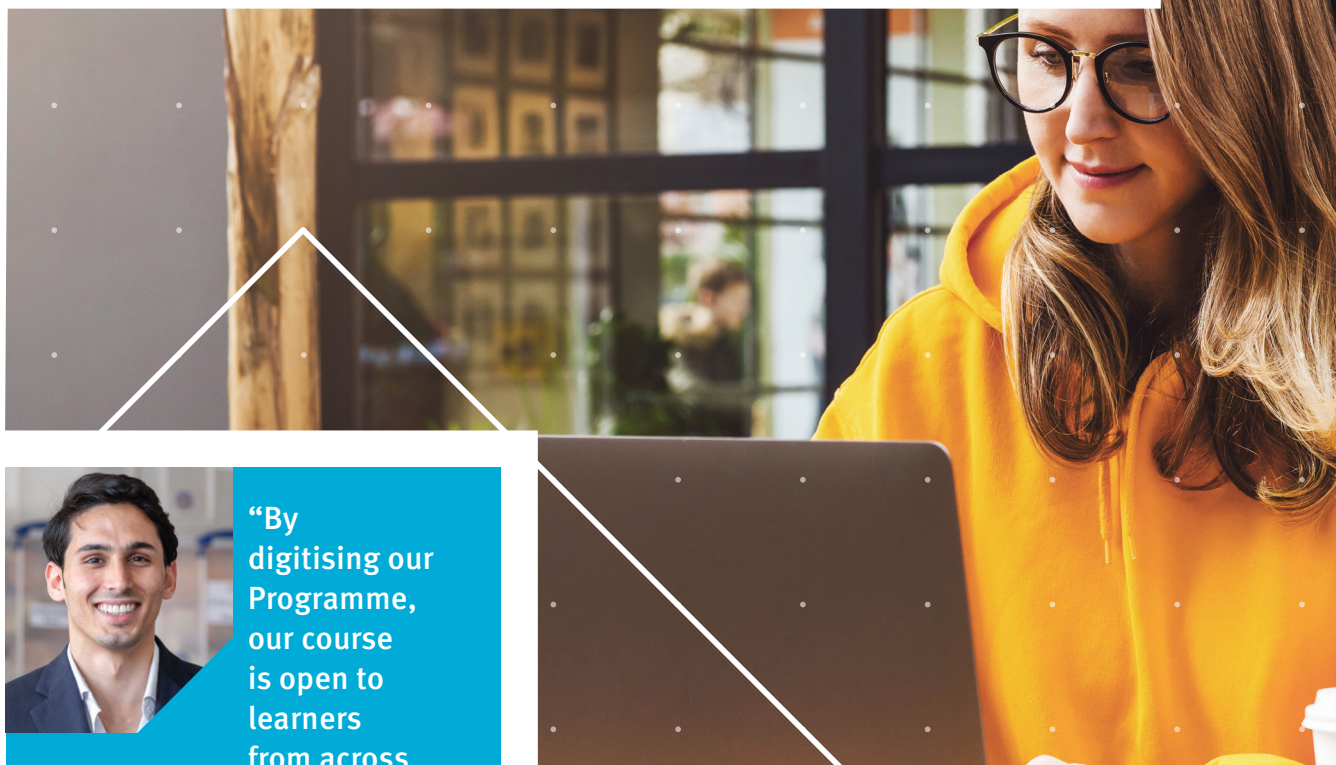


## Student and staff stories



“There are different opportunities for you to engage with the course. For example, we have a Q&A session with a panel of experts in patient safety who share their insights on large-scale medical failures. You cannot miss this wonderful experience!”

- Charlotte Parsley, MSc student



“By digitising our Programme, our course is open to learners from across

the world, bringing in a diversity of experiences and knowledge while capturing global patient safety perspectives. Our collaborative approach to learning with a wide range of relevant stakeholders and industry enables students to learn from real-life examples and gain valuable insights into the dynamic challenges facing healthcare systems.”

- Hadi Alagha, Teaching Fellow in Patient Safety

“Safe care will be essential for achieving universal health coverage. There are challenges, and we understand those. That’s why at the Institute of Global Health Innovation, we are seeking to help shape global health policy in relation to patient safety. We’re passionate about using our expertise to enable global leaders to become change markers in patient safety and that’s why we established the Masters in Patient Safety.”

- Professor David Nabarro, Co-Director of the Institute of Global Health Innovation



## Meet the course directors



### Professor Brendan Delaney

Chair in Medical Informatics  
and Decision Making  
[brendan.delaney@imperial.ac.uk](mailto:brendan.delaney@imperial.ac.uk)

Professor Brendan Delaney is the Course Director of the MSc Patient Safety. Prior to moving to Imperial, he was Wolfson Professor of General Practice at King's College London. At Imperial, he works in the Institute of Global Health Innovation, with research in artificial intelligence, cancer diagnosis and learning systems, eSource for clinical trials and global eHealth. He sits on the Cancer Research UK Population research funding panel and the Medical Research Council Methodology Research panel.

### Dr Ana Luisa Neves

Advanced Research Fellow  
and Associate Director,  
Patient Safety Translational  
Research Centre

[ana.luisa.neves14@imperial.ac.uk](mailto:ana.luisa.neves14@imperial.ac.uk)



Dr Ana Luisa Neves is the Deputy Director of the MSc Patient Safety and Module Lead (Digital Health) for the Master of Public Health at Imperial. Ana is also Module Lead (Health Data Collection and Principles of Health Data Science) at the PhD Programme in Health Data Science at the University of Porto, where she holds a post as Associate Professor. She has more than 10 years of research experience, with a focus on the use of health data and digital technologies to deliver safer, more effective, and patient-centred care.

## Study qualification

We offer the following qualifications in Patient Safety, which are available as a pathway that build to an MSc or as stand-alone qualifications:

- **PG Cert Patient Safety:** 4 core modules
- **PG Dip Patient Safety:** 8 core modules
- **MSc Patient Safety:** 8 core modules, a research project, 2 years





## Future opportunities

Our graduates will be well-placed to advance in a range of directions.

Safety and quality are increasingly important topics in the national dialogue of health systems, including the NHS. This is compounded by tightening national budgets. Individuals who demonstrate an understanding of patient safety lapses and how to address them are increasingly valued by employers.

Given the portfolio of high-calibre teaching staff, you can gain exposure to leaders in industry, academia and policy.

You will graduate with advanced research skills in healthcare design. This includes critical design thinking, entrepreneurship and leadership. Many graduates pursue further advanced study at PhD level in healthcare-related design and innovation areas.

You'll gain the knowledge and skills to:

- **create and lead design innovations across a diverse range of healthcare contexts**
- **consult in design-led innovations for healthcare**

## Accelerating your career

---

Undertaking a postgraduate programme at one of the world's leading universities will prepare you to work in senior role, with the potential to apply your skills and knowledge to lead transformative strategic initiatives and achieve significant impact.

By completing one of our Institute of Global Health Innovation programmes, you will join our growing community of alumni, driving forward the improvement of health and social care at scale and improving patient outcomes around the globe. An MSc equips you with the critical thinking, ideas and network to become a leading change-maker. Career opportunities include policymaking and leadership positions in governments and national bodies, along with further opportunities to study at postgraduate level, preparing you to take forwards a research or quality improvement idea at PhD level, should you choose.

## FAQs

---

### 1. What if I don't meet the academic requirements for the course?

Applicants who do not meet the academic requirements but have substantial relevant industry experience may be admitted following completion of a 'Special Qualifying Exam' (SQE).

### 2. What kinds of learning activities will the course involve?

Our programmes include a range of learning activities, such as pre-recorded lectures, asynchronous discussions, podcasts, and webinars.

### 3. What kind of support will I get?

We work hard to ensure that you are fully supported through the programme. We have an online resources area (the Hub) where you can access all the materials needed for your study. Our programme leads, and teaching fellows are always here to support you in your academic practice. We also put you into peer support groups, enabling you to capitalise on the skills and expertise of different disciplines of your peers.

Imperial also provides tailored learning support, pastoral support with an assigned personal tutor and short study skills courses for our students.

### 4. Can I pay in instalments?

You can either choose to pay in one go or in instalments. If you wish to pay in instalments, contact the Student Lending team before starting your study. More information can be found here: <https://www.imperial.ac.uk/students/fees-and-funding/tuition-fees/payment-terms/postgraduates/>

### 5. How will I interact with my peers?

You will work with your peers on different group projects and learn from their previous experience and skills. We bring together participants from a diverse range of roles and backgrounds so that you have the opportunity to network with people through the study journey.

### 6. What's the workload like?

If you undertake the master's level course, you are expected to make the time commitment required to finish your study. You may need to plan your time to ensure the balance between your work and study.

At Imperial, each ECTS credit taken equates to an expected total study time of 25 hours. The expected total study time for the MSc is calculated based on 24 months, 90ECTS.

We expect you to spend 20% to 25% of the time engaging with online content, working with your peers and small group learning activities, and attending online tutorials and webinars.

The rest of the hours will be made up with independent study and the completion of assignments.

### 7. Will I get access to Imperial's facilities and student benefits?

Yes, once you're registered with Imperial, you will have a student card, which allows you to use the library to get all the student discounts, student bus pass, and other student benefits.

Imperial College  
London

INSTITUTE OF  
GLOBAL HEALTH  
INNOVATION