

How to find... **RODH 510**

Getting to the **CAMPUS**



[SW7 2AZ](#)



9, 10, 52, 360, 14, 49, 70, 74,
345, 414, 430



PICADILLY
CIRCLE SOUTH KENSINGTON (6 min)
DISTRICT



PICADILLY
CIRCLE GLOUCESTER ROAD (8 min)
DISTRICT

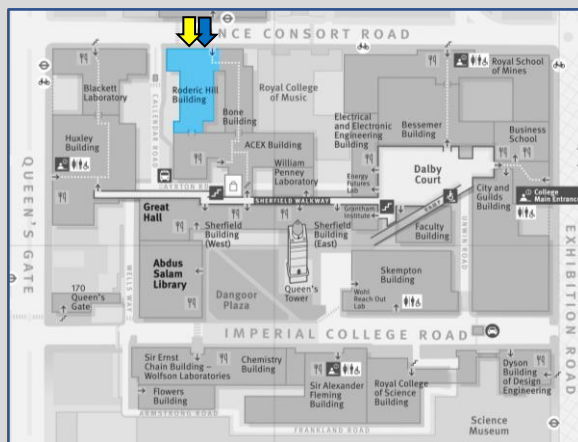


CIRCLE HIGH STREET KENSINGTON (15 min)



[///result.basic.pump](http://result.basic.pump)

Getting to the **BUILDING**



Access Roderic Hill from Prince Consort Road.

Building is between the Blackett Laboratory
and the Royal College of Music.

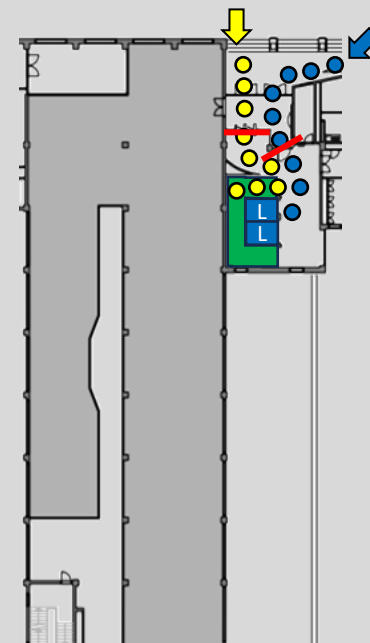


Main building entrance



Accessible entrance

Getting to the **FLOOR**



Access via main entrance puts you on level 2
with access to the staircase and lifts.



Primary staircase. Ascend to floor 5

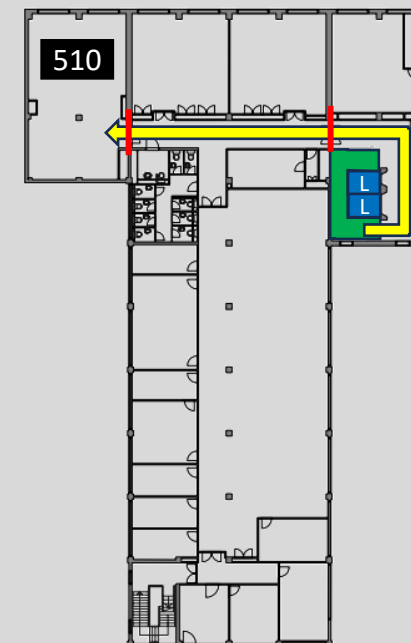


Elevator. Go to floor 5



Swipe access

Getting to the **ROOM**



Turn left and left from stairs and lift, swipe
through access door, and room 510 is at the
end of the corridor.