

Patient Experience Research Centre

Public Involvement Newsletter

Welcome to the December issue of the Patient Experience Research Centre, Imperial College London Public Involvement Newsletter.

In this issue we share upcoming opportunities to get involved in health research, as well as upcoming events which you might be interested in joining.

Please note Imperial College London will be closed for the Christmas/New Year's holiday period from 5pm, Friday 22 December 2023 and will reopen at 9:30am, Tuesday 2 January 2024.

Upcoming opportunities



Are you a parent, guardian, or carer of a child aged 0-18?

A team of researchers at Imperial College London are applying for a funding grant from the Medical Research Council (MRC) for a MRC Centre for Research Excellence for 7 years initially. The funding application will focus on the theme of **healthy ageing and lifestyle**, and more specifically **early life respiratory (lung) infections** and how this impacts **how the lungs age, grow and develop** to improve healthy life expectancy.

What is involved?

A 1.5 hour online discussion session (via Zoom) on **Monday 15 January 2024 from 5:30pm to 7pm**.

At the session you will:

- receive an introduction explaining the proposed research areas followed by an opportunity for you to ask questions more generally.
- share your views and feedback in smaller breakout rooms on areas of the proposed research funding application, which will be discussed during the session.

Who can apply?

The team applying for the funding is interested in hearing feedback from people who are parents, guardians, or carers of children aged between 0-18 years old. You don't need any prior knowledge of research as everything will be explained to you at the session.

Will I be paid?

You will be remunerated £37.50 for actively participating in the 1.5 hour Zoom call and a £5 contribution towards Wi-Fi/data expenses, which will be paid to a bank account.

How do I express my interest?

Click the button below to apply by **5pm, 3 January 2024**.

For any queries, please contact publicinvolvement@imperial.ac.uk.

Find out more & apply



Help shape research related to infection and antimicrobial resistance

Researchers at Imperial College London & Imperial College Healthcare NHS Trust are looking for people to partner with them to improve the health of the local community in North West London (NWL).

Who can apply?

Anyone who:

- is 17 years or older; and
- has lived experience of one of the following areas: tuberculosis, malaria, salmonella, HIV or hepatitis C; and
- lives, works, studies or receives/d healthcare in NWL;
- ideally has community connections in NWL (e.g. charities, support groups, residents groups, walking groups or church communities)

What is involved?

- Up to 15 hrs of your time until May 2024 with the possibility of extension
- Share your views with researchers & health professionals
- Attend meetings, and/or provide your feedback via email/phone

Why get involved?

- Share your valuable lived experience
- Get paid £25/hour plus expenses
- Receive training & develop skills

How do I express my interest?

Click the button below to apply.

For any queries, please contact publicinvolvement@imperial.ac.uk.

Find out more & apply



Have you taken part in a clinical trial?

Researchers at Imperial College London are looking for people to partner with them to join a Trial Steering Committee which will monitor the progress of a COVID clinical trial.

Who can apply?

Anyone who:

- is aged between 18 - 30; and
- lives, works, studies or receives/d healthcare in NWL;
- has experience as a participant on a UK-based clinical trial (i.e., as a member of the public and not a professional or medical student).

What is involved?

- Share your views with researchers and health professionals to shape clinical trials
- Attend monthly meetings on Microsoft Teams lasting no longer than one hour

Why get involved?

- Share your valuable lived experience
- Get paid £25/hour plus expenses
- gain more understanding about the clinical trial process and about human challenge trials
- Receive training & develop skills

How do I express my interest?

Click the button below to apply.

For any queries, please contact publicinvolvement@imperial.ac.uk.

Find out more & apply



Are you a young person and interested in health research?

The Imperial Biomedical Research Centre is looking for a young person to be part of its data access committee which meets virtually once a month. The data access committee decides which research projects can access electronic patient data to do health research to improve health and care of the North West London Community.

Who can get involved?

Anyone who:

- is aged between 17 - 25; and
- lives, works, studies or receives/d healthcare in NWL;
- no research experience needed

What is involved?

- Share your views about research projects with researchers and health professionals
- Attend monthly meetings on Microsoft Teams

Why get involved?

- Share your views and feedback
- Get paid £25/hour plus expenses
- Receive training and development skills
- Learn about health research

How do I express my interest?

Click the button below to express your interest.

For any queries, please contact publicinvolvement@imperial.ac.uk.

Find out more & apply



Help shape research into severe COVID-19 in North West London

Researchers at Imperial College London and Imperial College Healthcare NHS Trust are looking for people to partner with them to improve the health of the local community in North West London (NWL).

Who can apply?

Anyone who:

- is 17 years or older; and
- has **experienced severe COVID-19 symptoms**. This means experiencing **long-lasting respiratory issues** (i.e. **lung symptoms**, such as **breathlessness** or a **frequent cough** for **several months**) after your initial COVID-19 illness; and
- lives, works, studies or receives/d healthcare in NWL;
- ideally has community connections in NWL (e.g. charities, support groups, residents groups, walking groups or church communities)

What is involved?

- Up to 15 hrs of your time until May 2024 with the possibility of extension
- Share your views with researchers & health professionals
- Attend meetings, and/or provide your feedback via email/phone

Why get involved?

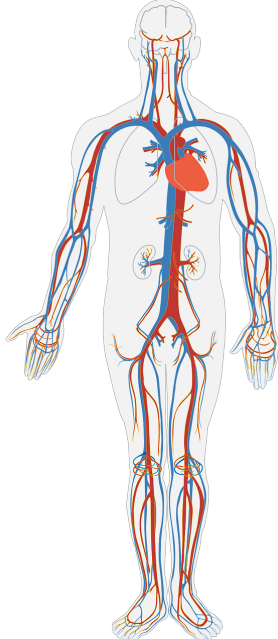
- Share your valuable lived experience of severe COVID-19
- Get paid £25/hour plus expenses
- Receive training & develop skills

How do I express my interest?

Click the button below to apply.

For any queries, please contact publicinvolvement@imperial.ac.uk.

Find out more & apply



Help shape research on heart rhythms

Researchers from the Biomedical Engineering research theme at Imperial College London & Imperial College Healthcare NHS Trust are looking for people to partner with them to improve the health of the local community in North West London (NWL).

Who can apply?

Anyone who:

- is 17 years or older; and
- has lived experience of arrhythmia (abnormal heart rhythm) such as: ventricular fibrillation, heart blocks, bradycardia, supraventricular tachycardia, atrial fibrillation; and
- lives, works, studies or receives/d healthcare in NWL;
- ideally has community connections in NWL (e.g. charities, support groups, residents groups, walking groups or church communities)

What is involved?

- Up to 15 hrs of your time until May 2024 with the possibility of extension
- Share your views to shape research affecting you or your community
- Attend meetings, and/or provide your feedback via email/phone

Why get involved?

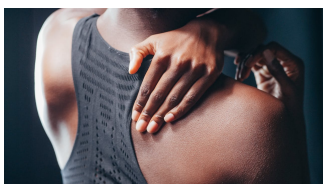
- Share your valuable lived experience
- Get paid £25/hour plus expenses
- Receive training & develop skills
- Learn about health technologies

How do I express my interest?

Click the button below to apply.

For any queries, please contact publicinvolvement@imperial.ac.uk.

Find out more & apply



Are you a young person with lived experience of conditions affecting joints?

Researchers from the Biomedical Engineering research theme at Imperial College London & Imperial College Healthcare NHS Trust are looking for people to partner with them to improve the health of the local community in North West London (NWL).

Who can apply?

Anyone who:

- is between 17-30; and
- has lived experience of conditions affecting the joints such as: osteoarthritis; osteoporosis; juvenile arthritis; rheumatoid arthritis; back pain due to joint pain (e.g. spondyloarthritis, sacroiliitis and facet joint osteoarthritis); and

- lives, works, studies or receives/d healthcare in NWL;
- ideally has community connections in NWL (e.g. charities, support groups, residents groups, walking groups or church communities)

What is involved?

- Up to 15 hrs of your time until May 2024 with the possibility of extension
- Share your views to shape research affecting you or your community
- Attend meetings, and/or provide your feedback via email/phone

Why get involved?

- Share your valuable lived experience
- Get paid £25/hour plus expenses
- Receive training & develop skills
- Learn about health technologies

How do I express my interest?

Click the button below to apply.

For any queries, please contact publicinvolvement@imperial.ac.uk.

Find out more & apply



Help shape research into digestive conditions

Researchers from the Digestive Diseases research theme at Imperial College London & Imperial College Healthcare NHS Trust are looking for people to partner with them to improve the health of the local community in North West London (NWL).

Who can apply?

Anyone who:

- is 17 years or older; and
- has lived experience of digestive conditions including: inflammatory bowel disease (IBD); ulcerative colitis; Crohn's disease; metabolic dysfunction-associated steatotic liver disease (MASLD/NAFLD); or experience of Faecal Microbiota Transplantation (FMT/ IMT); and
- lives, works, studies or receives/d healthcare in NWL;
- ideally has community connections in NWL (e.g. charities, support groups, residents groups, walking groups or church communities)

What is involved?

- Up to 15 hrs of your time until May 2024 with the possibility of extension
- Share your views to shape research affecting you or your community

- Attend meetings, and/or provide your feedback via email/phone

Why get involved?

- Share your valuable lived experience
- Get paid £25/hour plus expenses
- Receive training & develop skills
- Learn about health technologies

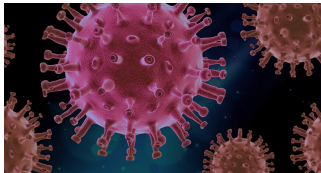
How do I express my interest?

Click the button below to apply.

For any queries, please contact publicinvolvement@imperial.ac.uk.

[Find out more & apply](#)

Upcoming events



Preventing infection by flu, RSV and SARS-CoV-2

Date & time: Wednesday 10 January 2024, 5:30pm – 6:30pm

Location: Online and in-person (Lecture Theatre 200, City and Guilds Building, South Kensington campus)

Chris Chiu is Professor of Infectious Diseases in the Department of Infectious Disease at Imperial College London focusing on human immunity against respiratory viruses. In his inaugural lecture, he will discuss how susceptibility to flu, RSV and SARS-CoV-2 infection and disease severity are critically influenced by immunity in the nose and lung, and how next-generation vaccines are being developed to not only reduce severe disease but also block infection itself.

[Find out more](#)



Imperial Lates: Romance & Reproduction

Date & time: Thursday 8 February 2024, 6pm – 9pm

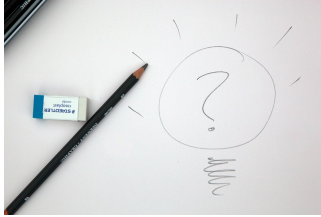
Location: Imperial College Main Entrance on Exhibition Road (South Kensington campus)

Imperial Lates will be returning in February 2024 to explore the wonders of science through creative workshops, lively discussions and interactive exhibits at this adult-only, after-hours event. In this Valentine's Day special, science gets sexy as the Imperial Lates team delve into attraction, intimacy and procreation. This evening will cover mature themes; Imperial Lates are intended for an 18+ audience.

Registration opens January 2024 (sign up to [the Imperial events email](#) to be notified when registration opens and find out more about Imperial Lates and other events).

[Find out more](#)

Blogs



Catch up on some of the public involvement that colleagues have been doing

Supporting schools to participate in research on children's physical activity and wellbeing

Involving schools in research can be challenging. Researcher Dr Bina Ram engaged teachers to identify facilitators and barriers to participation. [Read her insights from working with schools for a study on physical activity and wellbeing in children.](#)

Developing an implant to prevent breast cancer-related lymphoedema

The Moore Research Group are developing an implant to prevent breast cancer-related lymphoedema. [In this blog](#), they reflect on how patients informed the design of the implant and helped to raise awareness of breast cancer-related lymphoedema.



Want to learn more about public involvement in research?

Sign up to our online course on [Public Involvement in Research](#) on Coursera. The course is aimed at researchers but is also suitable for patients and the public to complete.

The course is set over four weeks (although you can go at your own pace) and introduces the concepts of public involvement and co-production in health research as well as discussing in more detail the role of public involvement across the research cycle.

[Find out more](#)

Our mailing address is:

Patient Experience Research Centre
St Marys Campus
Norfolk Place
London, W2 1PG

Want to change how you receive these emails?

You are receiving this email as you signed up to the Imperial College London Patient Experience Research Centre mailing list. To unsubscribe from these updates (or edit your preferences), please reply to this email with 'UNSUBSCRIBE' (or 'EDIT') in the subject line.

