

Patient Experience Research Centre

Public Involvement Newsletter

Welcome to the March issue of the Patient Experience Research Centre Public Involvement Newsletter.

In this issue we highlight some of our recent COVID-19 research activity, upcoming events and future opportunities for involvement and engagement in research.

News and updates



Want to learn more about public involvement in research?

We are delighted to announce that we have launched a new online public involvement training course through the Coursera platform.

The online course is entitled '[Public Involvement in Research](#)' and is aimed at researchers but is also suitable for patients and the public to complete. The course is set over four weeks (although you can go at your own pace) and introduces the concepts of public involvement and co-production in health research as well as discussing in more detail the role of public involvement across the research cycle.

You can find out more information about the course and details on how to access it [here](#).



Check out the newest Imperial College London campus

The [Imperial White City Campus](#) brings together scientific researchers, corporate partners, entrepreneurs and the local community to co-exist and co-create on an unprecedented scale. The White City Campus is home to the [invention rooms](#) a community space comprising of a workshop, design studio and cafe.

Take a 3D virtual tour to explore the state-of-the-art facilities [here](#)

Involvement and engagement opportunities



Opportunity to join National Institute for Health Research (NIHR) public committees

The NIHR are currently recruiting members of the public to join a number of national and regional NIHR committees. The committees include public members, senior academics and NHS clinicians and practitioners, who together assess research proposals and make recommendations for funding.

They are looking for patients, carers, service users and members of the public who are interested in a broad range of health and social care topics and research.

As a member of these committees you will be helping to improve national and local health and social care services for patients, people who use services, carers or the public. For further information about these roles and details on how to apply please visit the [NIHR website](#).

The deadline for applications is 9am Monday 15th March 2021.



Help us grow our VOICE community

VOICE is an online platform which brings together members of the public, patients and carers who want to influence and inform UK health research and innovation.

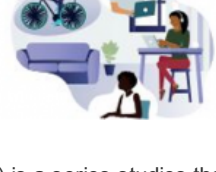
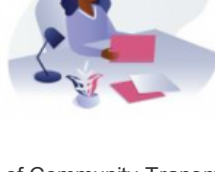
Imperial joined VOICE in January 2019, with the ambition to improve the way we involve patients and members of the public in our research. The public are at the heart of what we do, so ensuring your involvement, engagement and participation in research is a key priority for us. Through VOICE, we hope to capture the wealth of experience and valuable perspectives that individuals and communities can offer on the way our research is designed and delivered.

On the VOICE platform you will find opportunities for involvement, engagement and participation as well as upcoming events relating to health and social care.

To keep updated with the latest VOICE opportunities and help to influence and inform our research, [sign up today at voice-global.org](#)

COVID-19 research and updates

Latest findings from the REACT study



REACT (REal-time Assessment of Community Transmission) is a series of studies that are using home testing to improve our understanding of how the COVID-19 pandemic is progressing across England. This major research programme was commissioned by the Department of Health and Social Care (DHSC) and is being carried out by Imperial College London in partnership with Ipsos MORI and Imperial College Healthcare NHS Trust.

- **25 Feb '21:** Latest data from [our nationwide antibody testing programme](#) showed that around 14% of adults in England had antibodies against the virus that causes COVID-19. Learn more about the results, including insights into responses after vaccination, in this [Imperial news story](#) or [online pre-print](#)
- **18 Feb '21:** Interim results from [our nationwide coronavirus testing programme](#) showed that the number of people currently infected in England dropped by almost two thirds as a result of the current lockdown, but infection levels are still high. Learn more about the current findings in this [Imperial news piece](#) or [online pre-print](#). Final results for this round are due out next week
- **10 Feb '21:** Predictive analysis of symptoms reported by over a million participants in the REACT programme revealed a wide range of additional symptoms that are linked with having the coronavirus. Among these other symptoms, chills, loss of appetite, headache and muscle aches were together most strongly linked with being infected, alongside the four 'classic' symptoms. Read more in this [Imperial news article](#) or the [online pre-print](#)



New research study to help better understand Long COVID

A team of Imperial College London researchers has been awarded £5.5 million from the Government to study Long COVID. The research will involve more than 120,000 people to better understand why some people who are infected with the coronavirus have symptoms for several weeks or even months – a condition called Long COVID – while others don't. The team will work closely with people who have Long COVID to understand their varied symptoms and experiences. The researchers will also look at how people's biological makeup, their environment and social factors affect their likelihood of experiencing this illness, and the relationship between these.

Professor Helen Ward, one of the investigators and Director of Imperial's Patient Experience Research Centre, said: "It is critical that we work closely with patients to ensure that we are asking the right questions about this new and as yet poorly understood condition. We will use innovative approaches to patient and public involvement, working with existing patient groups and VOICE-Global at Newcastle University."

Read more about the new project [here](#).

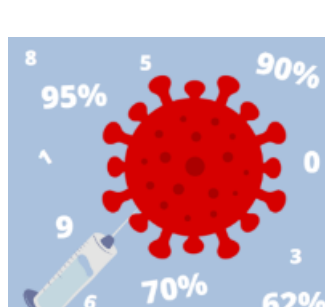


Curious About the COVID-19 Vaccines? Ask Scientists Your Questions Today!

Everyone seems to be talking about the COVID-19 vaccines - on the news, social media and friends and family but sometimes is hard to decipher what's true and what's not. Do you have a question about the vaccines that you would like our scientists to answer directly? Or is there something you have heard that you would like fact checked?

If so, submit your question [here](#) and one of our scientists will get back to you in a week or so with an answer.

Remember, if you have personal health related questions, it's important to get advice from NHS 111 or your healthcare professional.



Are the statistics from Covid-19 vaccine trials understood by members of the public?

Right now, in the UK and across the world, vaccines for Covid-19 are being rolled out. You may have already received, or be expecting a vaccination offer sometime soon. Their use has only been possible following robust and rigorous clinical trials, which have demonstrated that they meet high safety and effectiveness standards set by the UK medicines regulator (the MHRA). The results from Covid-19 vaccine trials have also been widely reported in the media, but do we actually understand what the findings mean?

Dr Suzie Cro, Research Fellow and Senior Statistician at the Imperial Clinical Trials Unit and the HEALTHY STATS public involvement group met

to discuss the results reported from two Covid-19 vaccine trials

(Pfizer/Biontech and Oxford/AstraZeneca).

In their [latest blog](#) you can find out their views on the vaccine results as well as their recommendations for how to improve public understanding of research statistics.



The UK to run a Covid-19 human challenge study

Imperial College London in partnership with the Royal Free London NHS Foundation Trust and clinical company hVIVO will be the first group, and country, to run a COVID-19 human challenge study.

The study will involve exposing up to 90 carefully selected healthy adult volunteers to coronavirus in a safe and controlled environment. The initial study will help scientists understand how the immune system reacts to coronavirus (the virus that causes COVID-19), and identify factors that influence how the virus is transmitted.

Find out more about the study [here](#).

Upcoming events

10th March; 18.30 - 19.30 GMT - Imperial Science Cafe: Lighting the way to better breast cancer surgery?

Imperial Science Cafes are hosted by the Imperial Cancer Research UK Centre and provide researchers the opportunity to have an ongoing conversation with patients and the public around cancer research. These events are free to attend and you can find [joining details here](#).

16th March; 19.00 - 20.00 GMT- Imperial Lates: Sunshine, health and wellbeing

As part of the ongoing Imperial Late series on the sun join this online and free event to hear from experts the latest in sunlight science and how we can overcome barriers to accessing and enjoying more sun-filled outdoor lifestyles. You can find further information and sign up details [here](#).

19th March; 11.00 - 12.00 GMT - Patient and Public Involvement Webinar: Introduction to statistics

Oxford and Thames Valley Applied Research Collaborative and Oxford Health Biomedical Research Centre are hosting a free webinar for patient and public involvement volunteers. The session will provide an introduction to statistics in health and medical research which has been designed for specifically for patients and members of the public involved in research. You can find out more and sign up via [Eventbrite](#).

You can keep up to date with upcoming Imperial events on the [What's On page](#) and catch up on previous events such as our recent [public Q&A on COVID-19 Vaccines](#) on the [Imperial YouTube Channel](#)

Contact us:
publicinvolvement@imperial.ac.uk

Our mailing address is:
Patient Experience Research Centre
St Marys Campus
Norfolk Place
London, W2 1PG

Want to change how you receive these emails?

You are receiving this email as you signed up to the Imperial College London Patient Experience Research Centre mailing list. To unsubscribe from these updates (or edit your preferences), please reply to this email with 'UNSUBSCRIBE' (or 'EDIT') in the subject line.

