

Imperial College  
London

# Welcome Information

2021/22



**Global Master of Public Health**  
(2 Year And 3 Year Option)

**Global PG Certificate of Public Health**

Delivered in partnership with

**coursera**

## Welcome



## Welcome

About the programme

FAQs

Post-acceptance

Next steps

# Welcome

We are very excited to welcome you to the Global Master of Public Health or Global PG Certificate for Public Health for 2021/22.

This welcome booklet aims to introduce you to the programme prior to enrolment and induction.

It includes key information for you to review, next steps and FAQs.

## Your programme directors



**Professor Helen Ward**

Helen trained in medicine at Sheffield University and is Clinical Professor of Public Health at Imperial College London. She has three decades of experience in research, education and applied public health, with an international reputation in the field of the epidemiology and control of sexually transmitted infections and HIV.

Helen will be teaching you as part of the Global Diseases Masterclass and Participatory Approaches in Public Health specialisations.



**Professor Paul Aylin**

Paul trained in Public Health after studying medicine at the University of Dundee. He spent three years at the Office for National Statistics as a Medical Statistician before coming to Imperial College. He leads and manages a team of researchers investigating variations in performance and safety in healthcare delivery.

Paul is the Director of Postgraduate Taught Studies for the School of Public Health and will be teaching you as part of the Research Portfolio specialisations on the GMPH.

## About the programme



### Welcome

#### About the programme

- › Admissions information
- › Admissions FAQ
- › Programme term dates
- › GMPH 2-year programme structure
- › GMPH 3-year, Direct Entry, Masters programme structure
- › PG Certificate, PG Diploma and 3-year Masters programme structure
- › Programme structure and content

#### FAQs

#### Post-acceptance

#### Next steps

# About the programme

Detailed information about the Programme Structure and Scheduling will be provided as part of your induction course.

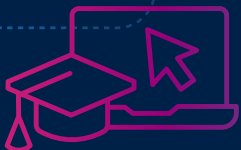
Before you enrol and ahead of the start Term 1 we aim to provide you with some key information to help you plan ahead and schedule this into your work/home calendar now. Please note that information in this booklet is subject to change ahead of the start of the academic year. Final confirmation of scheduling is confirmed as part of the induction course made available to enrolled students in September.

We have included information for you to review now including:

[Term Dates](#) [Programme Structure](#) [FAQs](#) [Pre-reading](#)



## About the programme



Welcome

### About the programme

- › **Admissions information**
- › Admissions FAQ
- › Programme term dates
- › GMPH 2-year programme structure
- › GMPH 3-year, Direct Entry, Masters programme structure
- › PG Certificate, PG Diploma and 3-year Masters programme structure
- › Programme structure and content

FAQs

Post-acceptance

Next steps

## Admissions information

### Information on completing your application

More information can be found here – [Imperial College London – How to Apply Guide](#)

Information on admissions related to Covid19 can be found on the Imperial College [website](#).

### Meeting your offer conditions

If you have been made an offer please ensure you meet the conditions of your offer as follows:

1. Paying your 10% tuition fee deposit.
2. Verifying your academic qualifications with the College Registry team.
3. Providing your English Language Test results (If required).



### Information on English Language Requirements

Please refer to our college website for postgraduate [English Language requirements](#). If you are required to take an English test as part of your offer conditions and do not have access to a test in your country, please check our Imperial College online [English assessment test](#).

### Scholarships and Funding

There are a range of scholarships available for postgraduate students to support you through your studies. Try the [Imperial College scholarships search tool](#) to see what you might be eligible for. The Faculty of Medicine offer [Dean's Masters scholarships annually](#) – please note applications are now closed for 2021/22 entry and information regarding 2022/23 entry will be made available next year via the webpages. The [School of Public Health offer scholarships annually](#) – please note applications are now closed for 2021/22 entry and information regarding 2022/23 entry will be made available next year via the webpages, by April 2022.

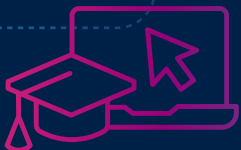
More information on external scholarship opportunities can be found here: [External Scholarships and Funding](#).

### Tuition fees

More information paying your tuition fees and our college policies can be found [online](#).

\*If you have been made an offer on the programme and have met all your offer conditions, refer to the [Post-acceptance](#) section for your enrolment info.

## About the programme



### Welcome

### About the programme

- › Admissions information
- › **Admissions FAQ**
- › Programme term dates
- › GMPH 2-year programme structure
- › GMPH 3-year, Direct Entry, Masters programme structure
- › PG Certificate, PG Diploma and 3-year Masters programme structure
- › Programme structure and content

### FAQs

### Post-acceptance

### Next steps

## Admissions FAQ

### How does the admission process work?

All applicants have to apply via the Imperial College webpages: [Apply Online](#). Your application will then be considered on review of your academic qualifications, relevant professional experience, two academic or professional references and your personal supporting statement. We aim to review applications, once all information has been submitted between 6-8 weeks. This allows us to review your application in detail and provide you with a decision.

### Would I need to have a student visa?

No, you will not need to apply for a student visa as this is a fully online programme and requires no physical attendance.

### Do you have financial assistance for foreign (non-UK) applicants?

The School of Public Health does not offer any financial assistance beyond the scholarships we have available for applicants to apply for. We encourage applicants to review where other Scholarships may be available and funding options like government funding schemes.

### What is the scope for scholarships?

For the 2021/22 entry, the School of Public Health Scholarships have now closed and the deadline passed. You can read more about these scholarships in the [Admissions Information](#) section.

If you wish to review any other available scholarships, you can search via the Imperial College [scholarships search tool](#).

### Is there any difference between the master's degree earned on campus and online?

Both programmes offer similar and related core modules/specialisations and optional choices, this online and part-time degree offers cutting-edge knowledge and skills based on the principles and methods of public health within a creative and supportive, fully-online learning environment. The core aims and learning outcomes

are comparable, but the assessments are different and have been designed and tailored specifically for an online platform.

Both are Imperial College Master's programmes and all students, on successful completion, will graduate with a Master of Public Health award.

### Will the 'online' status be mentioned in the final graduation certificate?

No, there will be no mention of "Online" on your certificate. Graduates will earn the same award as students in the on-campus programme and receive the Imperial College Master of Public Health award and transcript.

### Can I transfer credits from another university? If so how many?

It will not be possible to transfer credits into the programme. You will need to meet the entry requirements of the programme and complete it in full in order to be awarded a Master of Public Health.

### Is this degree accredited?

This degree is not accredited by any particular agency or professional body. This means our curriculum is not restricted by specific criteria, allowing us to design, develop and deliver an innovative and comprehensive public health curriculum which responds to the most recent developments in public health – this includes our own research discoveries. This sets us apart from courses in countries such as the US and Canada, where accreditation requirements are not suitable for a UK based programme. However, the core aims and outcomes of this degree do adhere to the European standards laid out by the [Agency for Public Health Education Accreditation](#).

### Who do I contact if I have any queries?

Please contact [gmpH-queries@imperial.ac.uk](mailto:gmpH-queries@imperial.ac.uk) if you have any admissions/application queries.

## About the programme



### Welcome

## About the programme

- › Admissions information
- › Admissions FAQ
- › **Programme term dates**
- › GMPH 2-year programme structure
- › GMPH 3-year, Direct Entry, Masters programme structure
- › PG Certificate, PG Diploma and 3-year Masters programme structure
- › Programme structure and content

### FAQs

### Post-acceptance

### Next steps

## Programme term dates

### Year 1 (2021/22)\*

#### Term 1 (16 weeks)

Monday 27th September 2021 – Friday 28th January 2022

*Christmas Break/College closure period (no teaching):*

*Monday 20th December 2021– Tuesday 4th January 2022*

#### Term 2 (16 weeks)

Monday 31st January 2022 – Friday 3rd June 2022

*Easter Break period (no teaching):*

*Monday 11th April– Friday 22nd April 2022*

#### Term 3 (13 weeks)

Monday 6th June 2022 – Friday 23rd September 2022

*Summer break (no teaching):*

*starting Monday of week 14 – 5th September*

\* The academic calendar remains consistent year on year. 2022/23 and 2023/24 term dates will be communicated in due course

### Other key dates for your diary

#### Imperial College Online Enrolment opens:

beginning of September 2021

#### GMPH Induction Course available:

after you enrol from beginning of September 2021

#### GMPH Induction Live Webinar event:

in September, details TBC

#### GMPH Electives Live Webinar event:

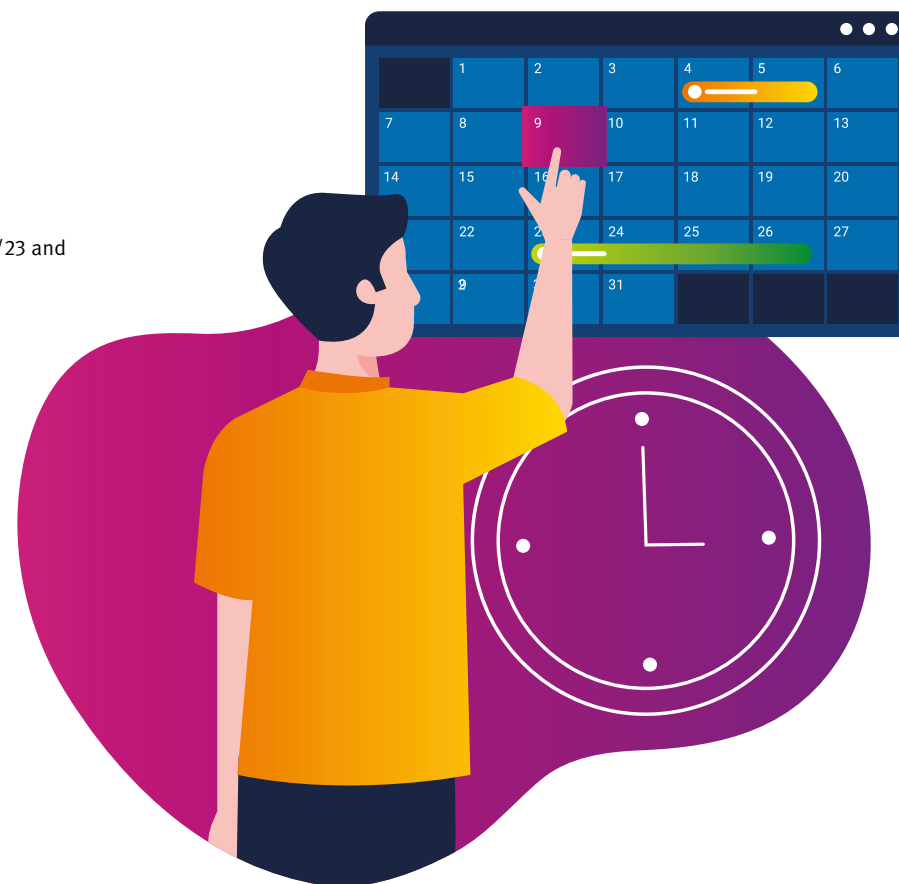
in September, details TBC

#### GMPH Tutoring System Live Webinar event:

in September, details TBC

#### GMPH Programme Teaching starts:

27th September 2021



## About the programme



### Welcome About the programme

- › Admissions information
- › Admissions FAQ
- › Programme term dates
- › **GMPH 2-year programme structure**
- › GMPH 3-year, Direct Entry, Masters programme structure
- › PG Certificate, PG Diploma and 3-year Masters programme structure
- › Programme structure and content

FAQs

Post-acceptance

Next steps

## GMPH 2-year programme structure

For 2021/22 entry, the programme structure is detailed below for the 2-year Global Master of Public Health. Further detailed information about each specialisation will be available through the Induction Course.

For the 2-year Global Master of Public Health you will undertake:

- 3 x specialisations per term, with the exception of the final Year 2, Term 6
- Elective specialisations you can choose from throughout the programme, from Term 1, Year 1.

Year 1		Year 2	
Term 1 Specialisations 16 weeks	Foundations of Public Health Practice	Pick TWO	Global Disease Masterclass
	Epidemiology for Public Health		Advanced Statistics and Data Science
	Pick ONE		Life Course Public Health
	Global Disease Masterclass		Global Health Challenges and Governance
	Life Course Public Health	Research Portfolio 2: Research Methods	
	Global Health Challenges and Governance		
Term 2 Specialisations 16 weeks	Statistics for Public Health	Pick TWO	Health Systems Development
	Pick ONE		Health Protection
	Health Systems Development		Global Health Innovations
	Health Protection		Infectious Disease Modelling
	Global Health Innovations		Quality Improvement in Healthcare
	Infectious Disease Modelling	Research Portfolio 3: Core Research Skills	
	Quality Improvement in Healthcare		
Term 3 Specialisations 16 weeks	Population Health Improvement	Research Portfolio 4: Research in Practice	
	Pick ONE		
	Digital Health		
	Participatory Approaches in Public Health		
	Health Economics		
	Research Portfolio 1: The Research Question		

Core Elective Research Portfolio

## About the programme



### Welcome

### About the programme

- › Admissions information
- › Admissions FAQ
- › Programme term dates
- › GMPH 2-year programme structure
- › **GMPH 3-year, Direct Entry, Masters programme structure**
- › PG Certificate, PG Diploma and 3-year Masters programme structure
- › Programme structure and content

### FAQs

### Post-acceptance

### Next steps

## GMPH 3-year, Direct Entry, Masters programme structure

For 2021/22 entry, the programme structure is detailed below for the 3-year Global Master of Public Health. Further detailed information about each specialisation will be available through the Induction Course.

For the direct entry Masters 3-year pathway you will undertake:

- 2 x specialisations per term
- A mix of core and electives for all terms.
- Elective specialisations you can choose from throughout the programme, from Term 1, Year 1.

	Year 1	Year 2	Year 3	
<b>Term 1</b> Specialisations 16 weeks	<b>Foundations of Public Health Practice</b> <b>Epidemiology for Public Health</b>	<b>Pick TWO</b> Global Disease Masterclass Advanced Statistics and Data Science Life Course Public Health Global Health Challenges and Governance	<b>Pick ONE</b> Advanced Statistics and Data Science Life Course Public Health Global Health Challenges and Governance <b>Research Portfolio 2: Research Methods</b>	<b>Core</b> <b>Elective</b> <b>Research Portfolio</b>
<b>Term 2</b> Specialisations 16 weeks	<b>Statistics for Public Health</b> <b>Pick ONE</b> Health Systems Development Health Protection Global Health Innovations Infectious Disease Modelling Quality Improvement in Healthcare	<b>Pick TWO</b> Health Systems Development Health Protection Global Health Innovations Infectious Disease Modelling Quality Improvement in Healthcare	<b>Research Portfolio 3: Core Research Skills</b>	
<b>Term 3</b> Specialisations 16 weeks	<b>Pick ONE</b> Population Health Improvement Digital Health Participatory Approaches in Public Health Health Economics	<b>Pick TWO</b> Population Health Improvement Digital Health Participatory Approaches in Public Health Health Economics <b>Research Portfolio 1: The Research Question</b>	<b>Research Portfolio 4: Research in Practice</b>	



## About the programme



### Welcome About the programme

- › Admissions information
- › Admissions FAQ
- › Programme term dates
- › GMPH 2-year programme structure
- › GMPH 3-year, Direct Entry, Masters programme structure
- › **PG Certificate, PG Diploma and 3-year Masters programme structure**
- › Programme structure and content

FAQs

Post-acceptance

Next steps

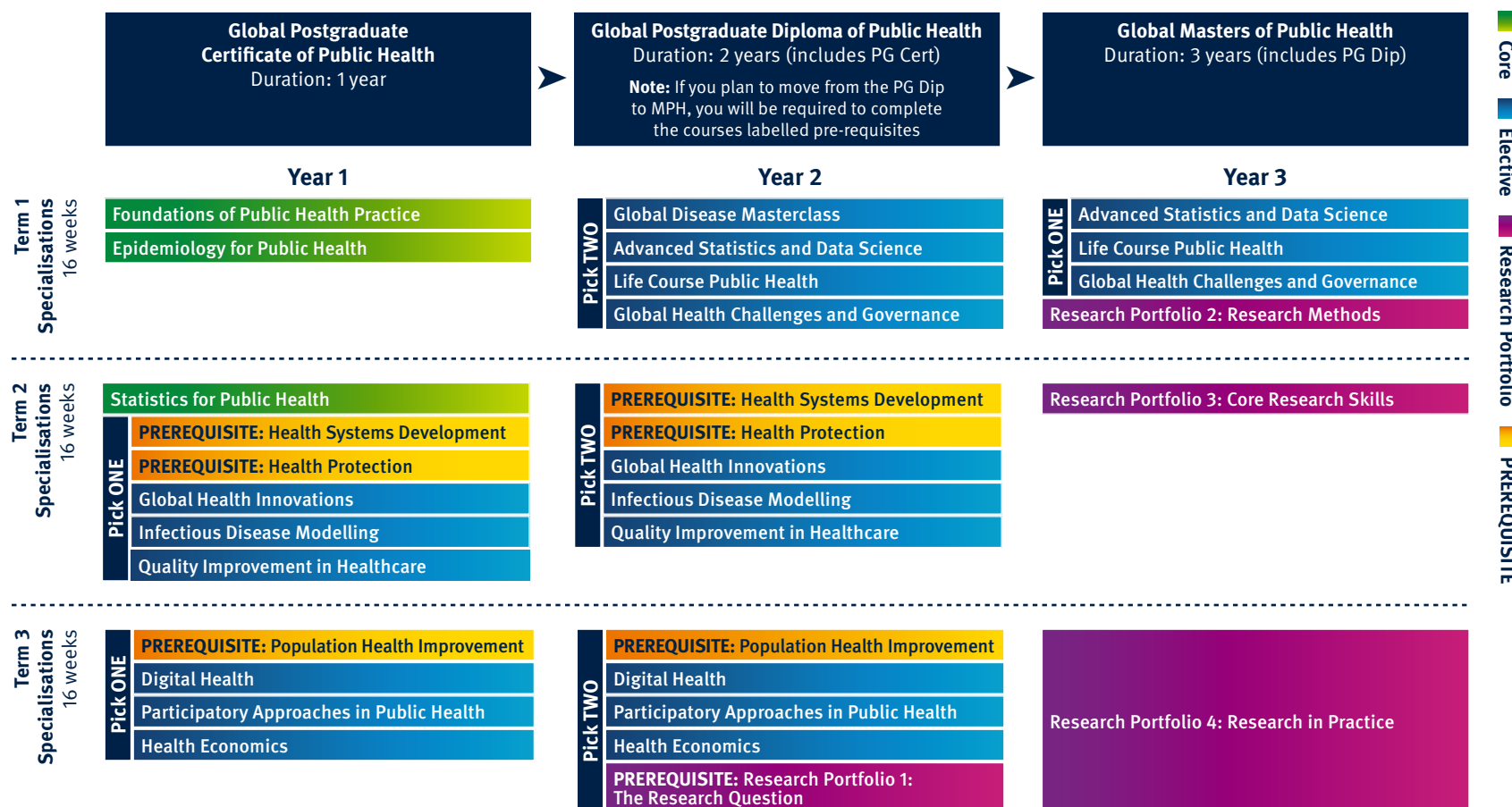
## PG Certificate, PG Diploma and 3-year Masters programme structure

For 2021/22 entry, the programme structure is detailed below for the Global PG Certificate, PG Diploma and Masters degree. Further detailed information about each specialisation will be available through the Induction Course.

These are discrete courses of study. You can choose to complete the full Masters pathway, or exit with any one of the awards.

For the PG Certificate, PG Diploma, Masters 3-year pathway you will undertake:

- 2 x specialisations per term
- A mix of core and electives for all terms.
- Elective specialisations you can choose from throughout the programme, from Term 1, Year 1.
- Required specialisations (pre-requisites) if you are progressing from PG Cert to PG Dip and to Masters



## About the programme



### Welcome

#### About the programme

- › Admissions information
- › Admissions FAQ
- › Programme term dates
- › GMPH 2-year programme structure
- › GMPH 3-year, Direct Entry, Masters programme structure
- › PG Certificate, PG Diploma and 3-year Masters programme structure
- › **Programme structure and content**

### FAQs

### Post-acceptance

### Next steps

## Programme structure and content

### What is the scope of the programme and what should students expect?

- This programme aims to provide a comprehensive grounding in public health for students who wish to pursue or advance careers in public health practice, management, policy, and/or research at local, national and/or international levels.
- The programme has a special focus on the development of quantitative analytical skills for public health, epidemiology and health services research.
- Core specialisations will focus on building core skills and knowledge in epidemiology, the spread and prevention of disease, statistical analysis and modelling, and various areas of public health practice, policy, and global health challenges.
- Students will also be able to build a degree that best suits their interests, through the selection of elective specialisations allowing students to focus their efforts on those areas of study of most importance to them and their future careers.



### Which pathway should I choose?

- You can enrol on different pathway options dependent on your ability to commit to the learning required per pathway. All pathways are part-time but require different levels of commitment in terms of study/learning hours.
- You can choose between:
  - 1-year Postgraduate Certificate,
  - 2-year Masters,
  - 3-year Masters.
- If you decide to study for a Masters degree, the choice between 2 and 3-year programme will depend on the number of hours of study you can commit to per week.
- The 2-year Masters programme as a standalone pathway, requiring you to study three specialisations per term (approx. 21-24 hours study time per week over 2 years). You would enrol directly on the Masters 2-year pathway.
- The 3-year Masters programme as a standalone pathway, requiring you to study two specialisations per term (approx. 14-16 hours per week over 3 years). You would study the same specialisations and programme content as the 2-year programme, but instead spread out over 3 years. You can enrol directly on the Masters 3-year pathway, or follow the progression route below and first enrol on the PG Cert programme. You would study the same specialisations over the 3 years if you successfully progressed through each award.
- The PG Certificate programme as a standalone pathway, requiring you to study two specialisations per term (approx. 14-16 hours per week over 3 years) for 1 year only. The specific specialisations are captured in the pathway diagram appended/available on the webpages. You can leave after 1 year with the PG Certificate as a standalone award or you can progress on to the PG Diploma for year 2 and complete the required specialisations. You can leave after Year 2 with the PG Diploma or progress further to the 3-year Masters pathway (subject to exam board approval).

## About the programme



### Welcome

#### About the programme

- › Admissions information
- › Admissions FAQ
- › Programme term dates
- › GMPH 2-year programme structure
- › GMPH 3-year, Direct Entry, Masters programme structure
- › PG Certificate, PG Diploma and 3-year Masters programme structure
- › **Programme structure and content**

### FAQs

### Post-acceptance

### Next steps

#### How many specialisations are there?

- For 2021/22, the 2-year and 3-year Masters programme structure includes:
  - 10 core specialisations
  - 10 elective specialisations (of which you chose 6)
- You will study 16 specialisations to successfully complete the GMPH degree programme.
- Of these specialisations, 4 will be comprised of the research portfolio, including devoted time to conduct your dissertation.
- For 2021/22, the PG Cert programme structure includes 6 specialisations:
  - 4 core specialisations
  - 2 elective specialisations
- You will study 6 specialisations to successfully complete the PG Cert programme.

#### Masters core specialisations:

- Statistics for Public Health
- Epidemiology for Public Health
- Foundations of Public Health Practice
- Health Systems Development
- Health Protection
- Population Health Improvement
- Research Portfolio 1: The Research Question
- Research Portfolio 2: Research Methods
- Research Portfolio 3: Core Research Skills
- Research Portfolio 4: Research in Practice

#### PG Certificate core specialisations:

- Statistics for Public Health
- Epidemiology for Public Health
- Foundations of Public Health Practice
- Health Protection

#### PG Diploma core specialisations:

- Statistics for Public Health
- Epidemiology for Public Health
- Foundations of Public Health Practice
- Health Protection
- Population Health Improvement (pre-requisite if progressing to the Masters, otherwise elective)
- Health Systems Development (pre-requisite if progressing to the Masters, otherwise elective)
- Research Portfolio 1: The Research Question

#### Elective specialisations per level/award:

##### Masters:

- Global Diseases Masterclass
- Global Health Challenges and Governance
- Global Health Innovations
- Infectious Disease Modelling
- Quality Improvement in Healthcare
- Participatory Approaches in Public Health
- Digital Health
- Advanced Statistics and Data Science
- Life Course Public Health
- Health Economics

##### PG Cert/PG Dip:

- Global Diseases Masterclass
- Global Health Challenges and Governance
- Health Systems Development
- Global Health Innovations
- Infectious Disease Modelling
- Quality Improvement in Healthcare
- Participatory Approaches in Public Health
- Digital Health
- Advanced Statistics and Data Science
- Life Course Public Health
- Health Economics
- Research Portfolio 1: The Research Question (PG Dip only)

## Frequently asked questions



### Welcome About the programme FAQs

- › Teaching and delivery
- › Assessment
- › Access and communication
- › Research Portfolio content
- › Careers and graduation
- › Previous study and Coursera courses

Post-acceptance  
Next steps

# Programme FAQ

Ahead of enrolment and starting your programme, we aim to answer some common FAQs.

Detailed information regarding the programme will be accessible once you enrol and as part of the Induction Courses.

The common FAQs have been divided into different sections:

- [Teaching and delivery](#)
- [Assessment](#)
- [Access and communication](#)
- [Research Portfolio content](#)
- [Careers and graduation](#)
- [Previous study and Coursera courses](#)

If there is anything else you need to know now, don't hesitate to reach out and contact us via [gmpH-queries@imperial.ac.uk](mailto:gmpH-queries@imperial.ac.uk)



## Frequently asked questions



### Welcome About the programme FAQs

- › **Teaching and delivery**
- › Assessment
- › Access and communication
- › Research portfolio content
- › Careers and graduation
- › Previous study and Coursera courses

### Post-acceptance Next steps

## Teaching and delivery

### When does teaching start?

- For Year 1 2021/22 entry, teaching starts the week commencing Monday 27th September 2021.
- The full and detailed schedule for Term 1 will be made available to you as part of the induction course.

### How many weeks of teaching are there a term?

- Each term has 16 weeks but not all weeks have live sessions scheduled or require you to complete content.
- The later weeks of each term are lighter and the relevant Term schedule will clearly detail this.
- Each year has 3 terms.
- Summer Term (Term 3 – Year 1) has 13 weeks of teaching and is followed by Summer holiday.

### How many lectures/teaching sessions are there a week? What time are the live sessions scheduled? How long do they last?

- You will study:
  - 3 specialisations per term if you enrolled on the 2-year Global Master of Public Health, or
  - 2 specialisations per term on the 3-year Global Master of Public Health or PG Certificate (and on to the PG Diploma>Masters 3 year pathway).
- Each specialisation has a specific day each week they will deliver their live sessions.
- You will have live sessions throughout the term in each specialisation (totalling 2 or 3 x live sessions per week or every other week depending on the pathway chosen).
- These live sessions have been scheduled and will be detailed in the Term 1 schedule. Some weeks do not have scheduled live sessions and these are also detailed.

- Your Live Events Calendar on the Coursera platform will detail all of the live events/sessions scheduled.
- Teaching Fellows will also be available for scheduled 'Office Hours' during a set time period and available to respond to Q&As and answer any questions for each specialisation.
- The majority of live sessions and office hours will start at either 10.00am, 11.00am or 15.00pm GMT. The time slot will alternate each week, for each specialisation, so that students from different time zones are able to join the live session at least every other week, for each specialisation. These sessions typically last approx. 1-2 hours.

### What if I cannot join or miss a live session? Do I have to join every live webinar?

- The programme is designed to work flexibly for different time zones and attendance to each live session is not mandatory – all recordings can be accessed shortly after the live sessions take place.
- We will try to keep to the same delivery schedule each term to help you attend.
- Each live session will be recorded and available to you on the Coursera platform, for each specialisation.
- You can access all recordings throughout the specialisation at any time.
- We highly recommend that you join as many live sessions as you can, as this maximises your learning and experience on the programme.
- You are able to talk and interact directly with the Teaching Team and your peers in these live sessions. You will also be introduced to and be able to engage with guest speakers, who are leaders in the field. The sessions will be open for you to submit questions, raise your hand and get feedback, as well as practice your new skills.

## Frequently asked questions



### Welcome About the programme FAQs

- › Teaching and delivery
- › Assessment
- › Access and communication
- › Research portfolio content
- › Careers and graduation
- › Previous study and Coursera courses

### Post-acceptance Next steps

#### How many hours do I need to study a week?

- We recommend that:
  - For 2-year Masters programme – approx. 21-24 hours are dedicated to your studies each week (7-8 hours per specialisation), including live sessions and independent study time as follows. You will study 3 specialisations per term.
  - For PG Cert and 3-year Masters programme – approx. 14-16 hours are dedicated to your studies each week (7-8 hours per specialisation), including live sessions and independent study time as follows. You will study 2 specialisations per term.
- Live sessions will make up:
  - For 2-year Master programme – approx. 4-6 hours of your study time each week (for all specialisations).
  - For PG Cert and 3-year Masters programme – approx. 2-3 hours of your study time each week (for all specialisations)
- There are also scheduled office hours each week for each specialisation where you can join a Q&A with the dedicated Teaching Fellow for the specialisation and meet with them. These are not compulsory.
- You will be required to study and work your way through each specialisation each week and keep on track with the weekly live sessions, activities and formative assessment. This is classed as independent study time and will make up:
  - For the 2-year programme – approx. 15-18 hours per week.
  - For PG Cert and 3-year Masters programme – 10-12 hours per week.
  - However, this will vary week to week and depending on the content you are learning.
- Some weeks do not schedule live sessions or formative assessment and you may be focusing purely on your summative assessment.

#### Are there any in-person requirements?

- No – the programmes are fully online and you can study from your home, work or any other location that has a secure and strong wi-fi connection. No teaching will take place on-campus.

#### How do I see the lecturers? How do I/can I speak to my other students/peers?

- You will access teaching through various different methods each week.
- Lectures/teaching content will be delivered to you each week via pre-recorded videos, and e-tivities. Each week takes you through specific content and will feature content from different lecturers/speakers who specialise in the content being taught. All the content has been scaffolded to help walk you through the content in interesting and engaging ways that also allow you to apply and practice your knowledge.
- You will have 1 live session each week, per specialisation, and be in direct contact with the Specialisation Lead and dedicated Teaching Fellow.
- In these live sessions you will have the opportunity to interact with your peers and may be asked to undertake group work/discussions.
- In addition to live sessions, you will interact with your peers through the discussions forums within each specialisation and can post questions, seek answers and generate interesting discussions between one another about the specialisation content.
- You can also connect with your peers via Slack, which is a networking and peer-to-peer communication tool. You can direct message one another and set up specific channels. More information about this will be available during the Induction Course.

#### Are there any considerations about the time zone difference?

- The majority of the live sessions will start at either 10.00am, 11.00am or 15.00pm GMT.
- The time slot will alternate each week, for each specialisation, so that students from different time zones are able to join the live webinar at least every other week, for each specialisation.
- You can access all recordings of the live sessions throughout the specialisation at any time.



## Frequently asked questions



### Welcome About the programme FAQs

- › **Teaching and delivery**
- › Assessment
- › Access and communication
- › Research portfolio content
- › Careers and graduation
- › Previous study and Coursera courses

### Post-acceptance Next steps

#### If I would like to talk to a member of the faculty, should I arrange my schedule based on London time?

- Your interaction with the Teaching team, i.e. Specialisation Leads and Teaching Fellows will happen each week via the live sessions.
- There are also scheduled office hours each week where you can join a Q&A chat with the dedicated Teaching Fellow for each specialisation and meet with them. These are not compulsory.
- We aim to schedule the above with different start times on alternate weeks to allow for students to have access to join across different time zones. Teaching teams will be monitoring the discussion forums to provide insights and support.

#### Can I change my mind and swap and drop specialisations?

- All the core specialisations need to be successfully completed as they 'core'.
- If you start an elective specialisation and want to swap this for another one, you have 2 weeks to make this decision once the specialisation has started and you may be permitted to change.

#### When do I choose my elective specialisations?

- For Year 1, you will make indicative choices for your Term 1, Term 2 and 3 elective specialisations during the Induction Course, before Term 1 starts.
- Before the end of Term 1, you can then re-review and change your indicative choices for Term 2 approx. December-January before Term 2 starts.
- For Term 3 choices, you can then re-review and change these approx. May-June before Term 3 starts.

#### Is it possible to complete only certain specialisations or would I need to do the full gmph?

- To study on the programmes, we currently offer a 2-year part-time degree, or 3-year part-time degree pathway. For the 2-year and 3-year GMPH pathway, you enrol on this full degree programme.
- For the 3-year GMPH pathway, you can also enrol first on the PG Certificate for Year 1, then progress on to the PG Diploma for Year 2 (if you wish to), and then progress on to the Masters for Year 3 (if you wish to).
- We do not currently offer individual specialisations for credit, as part of any programme.

#### I have completed one of the courses already on the coursera platform as open content, will I have to re-do it as part of the degree?

When at all possible, the formative content you have completed will remain on the platform and be combined to appear as part of the degree specialisation. We strongly suggest however that you work through material that you have completed as part of the open content to ensure you are best placed to succeed in your degree.

- Your formative assessments will be shown in a separate section. These will not count towards your progress on any part of the programme but serve as a formative benchmark for your performance. Passing these portions of the class indicate the minimum passing threshold for the course; although, individuals may have acquired more mastery.
- You are expected to review and undertake all additional degree content. This includes joining live events/webinars and completing all summative assessments as this will be additional content and new for you, and compulsory to complete the degree programme.

## Frequently asked questions



### Welcome About the programme **FAQs**

- › Teaching and delivery
- › **Assessment**
- › Access and communication
- › Research portfolio content
- › Careers and graduation
- › Previous study and Coursera courses

### Post-acceptance Next steps

## Assessment

Are all the courses and assessments done online?  
Or would one have to come to the university for examinations?

- Yes, all assessments are completed online.
- **IMPORTANT:** Before the beginning of the term, please make note of summative assessments deadlines as they are fixed, and missing assessments may impact your progress on the course. Whether it is PG Cert or Masters degree, it is still an Imperial College degree and it is held to the same assessment standards and regulations as on-campus programmes.
- Students are required to take part in group work and prepare presentations delivered either live or recorded. Please make sure you set aside the time for attending live presentations.
- There are no written examinations as part of the degree programme assessment.
- Assessment methods include both formative and summative assessments.
- Assessments have been designed to help you apply both theory and apply this to practical public health problems. We continue to innovate, so the method of assessments will vary throughout the programme.
- You may be asked to complete different types of assessment including:
  - Peer review
  - Written essays
  - Critical review papers, policy briefs, or programme proposals
  - Multiple choice quizzes
  - Data set analysis
  - Group work
  - Individual and group presentations
  - Video blog

If it's online how will you assess me? Do I just email you my essays?

- All assessment will be completed online, including formative assessments that you will carry out as part of your learning.
- Different e-tivities are built-in for you to complete directly on the platform, including MCQs and other quiz types.
- Where you are required to submit a piece of written coursework, for example an essay, you would be required to submit this by uploading directly to a submission portal on the platform.
- All assessment submission instructions will be provided to you.

What is the difference between formative and summative assessment?

- In a nutshell, formative assessments are quizzes and other pieces of work which provide the opportunity to test your knowledge and skills, and work with your peers, and should be seen as an evaluation of how you are learning material throughout each specialisation.
- Summative assessments will evaluate and test your learning in a more substantive way, which may take place mid-way or at the end of each specialisation.
- The formative marks you receive do not contribute to your overall marks but help you learn and prepare for summative
- Summative marks for each assessment are combined and will contribute to an overall specialisation mark and final degree mark/classification. assessment.



## Frequently asked questions



### Welcome About the programme **FAQs**

- › Teaching and delivery
- › Assessment
- › **Access and communication**
- › Research portfolio content
- › Careers and graduation
- › Previous study and Coursera courses

### Post-acceptance Next steps

## Access and communication

Can I access coursera platform and zoom from another device other than a laptop or computer?

- It is highly recommended that you learn and access the platform from a laptop or desktop computer.
- You are able to access content from a mobile or other device, but it will limit your learning experience on the platform.
- Please access the full technical requirements information and guidance regarding technical expectations that will ensure you are set up for success to undertake this programme. The information is available [here](#).



## Frequently asked questions



### Welcome About the programme **FAQs**

- › Teaching and delivery
- › Assessment
- › Access and communication
- › **Research portfolio content**
- › Careers and graduation
- › Previous study and Coursera courses

### Post-acceptance Next steps

## Research Portfolio content

For the 4 Research Portfolios of the programme, do I need to come up with a new project for each one of them, or will the faculty be providing us with project topics instead?

Please note that the full Research Portfolio can only be taken if you undertake the full MPH 2 or 3-year pathway.

The PG Certificate does not include any research specialisations. The PG Diploma can include Research Portfolio 1 only.

- Research Portfolio has been designed to help you work through your dissertation project in stages, starting with your question and building up to your methods and ethical approval (i.e. from Research Portfolio 1 through to Research Portfolio 4).
- You will not be required to come up with a new project for each of the specialisations. However, you may need or want make changes to your project throughout the course of the degree. You may also be in the position where some of the assessments are less relevant to your project, so you may be asked to think about these concepts more broadly in the context of research. One example might be with regards to getting ethical approval, not all projects may need ethical approval, but this is a key skill in the research process.
- The dissertation will take the form of a policy paper or a journal style article, which has been done to help students who might want to publish this work. School of Public Health and the GMPH welcome and encourage students to publish their work, and in particular outstanding work which is related to the programme. This will typically be in relation to the dissertation.

Would the programme provide me with data to fulfil the last essay of research in practice?

- Research Portfolio has been developed to support research which is contextually based to your own interests and work. There may be the opportunity to conduct your research project in partnership with an Imperial College research project, but this is not guaranteed.
- Research Portfolio team will work closely with you to think about where your interests lie and how what your options might be. The team strongly support students also using their own networks, and, where possible, doing projects that may be in line with or support their current work.
- There are a number of specialisations which will help to build your core research skills. Epidemiology for Public Health and Statistics for Public Health will help to support quantitative research within and well beyond the programme.
- Research Portfolio 2 will explore research methods, both for your own project, as well as give you a good foundation in a variety of research skills. There will also be the opportunity to undertake master classes to continue to build practical skills as you undertake Research Portfolio 4 and move into your dissertation.

## Frequently asked questions



### Welcome About the programme FAQs

- › Teaching and delivery
- › Assessment
- › Access and communication
- › **Research portfolio content**
- › Careers and graduation
- › Previous study and Coursera courses

### Post-acceptance Next steps

With regards to project selection – I'm not sure I quite understand the process from reading the course spec.

- Students will be guided through the full research process starting in the Research Portfolio 1 (Year 1 in 2-year programme and Year 2 in 3-year programme). The team will support students to help determine their research question.
- Students will be encouraged to pick a question which relates to their interest or work. Not all students will need to do primary data collection, so do not worry about this.
- The induction course will give you a bit more preliminary information to start to guide your thinking, as you begin to learn more about the public health topics presented in each specialisation.

How are research projects chosen? Are there specific suitable areas/research supervisors?

- Students will be supervised in groups, which will be formed throughout the research portfolio process. They will be directed to individuals with specific expertise, and are encouraged, if they are undertaking work with a partner, to name a partner supervisor to support the process.

Do you teach about how to organise and manage data collected for research or is that something that I need to learn about before I start your programme?

- As part of both the induction week and Research Portfolio 1, students will be guided through some of the core skills related to literature searches and the available programmes to help you conduct searches in a more systematic way.
- The student induction course and tutor system will also help to provide more direction about getting back into academic writing, literature search/research, and other study skills.



## Frequently asked questions



### Welcome About the programme **FAQs**

- › Teaching and delivery
- › Assessment
- › Access and communication
- › Research portfolio content
- › **Careers and graduation**
- › Previous study and Coursera courses

### Post-acceptance Next steps

## Careers and graduation

### What is a possible further career path after this online programme?

- In public health, the focus is on populations and communities rather than individual patients. There are a number of career options in research, public or government services or voluntary organisations and non-governmental organisations.
- Possible future career paths include roles ranging from public health analysts, health services researchers, communicable disease control consultants, environmental epidemiologists, health policy advisors or directors of public health.
- As you go through the programme, you will hear about our team's experiences, as well as those of Imperial SPH students. We encourage you to ask about career path, and explore your own interests. Public health is a very large topic, with ample opportunities depending on your interests.

### What will my career options be after I take this course?

- There are many different career options as a graduate.
- As this is a new course, there have not yet been any graduates of the programme. However, the School of Public Health also offers an on-campus MPH, taught at our St Mary's Campus in London. Graduates of this course have gone into leadership roles in academia, government, industry and non-governmental organisations such as the Gates Foundation, the United Nations, and the World Health Organisation.

### What are the advantages of this programme?

- School of Public Health at Imperial College aims to achieve better health in the population through strengthening the public health science base, training the next generation of public health leaders and influencing health policies and programmes around the world.
- To this end the Global Master of Public Health aims to provide a comprehensive grounding in public health for students who wish to pursue or advance careers in public health practice, management and/or research at local, national and/or international levels.
- This online and part-time degree offers cutting-edge knowledge and skills based on the principles and methods of public health within a creative and supportive, fully-online learning environment.
- The programme has a special focus on the development of quantitative analytical skills for public health, epidemiology and health services research.

### Will an online degree be respected for career enhancement objectives?

- Graduates will earn the same final award of the Master of Public Health as students on the on-campus program. The final degree earned is a full Masters from Imperial College London.

## Frequently asked questions



### Welcome About the programme **FAQs**

- › Teaching and delivery
- › Assessment
- › Access and communication
- › Research portfolio content
- › Careers and graduation
- › **Previous study and Coursera courses**

Post-acceptance  
Next steps

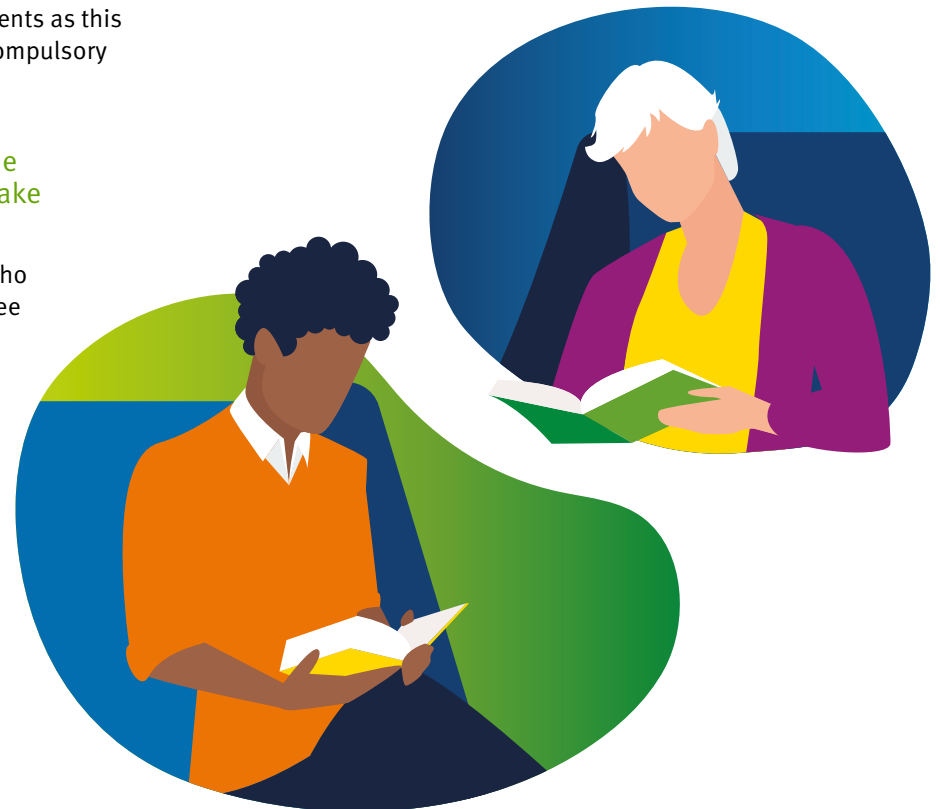
## Previous study and Coursera courses

I am currently taking one of the coursera specialisations from the programme. I understand this can be counted towards the global MPH should I apply and be accepted onto the degree programme.

- The formative content you have completed will remain on the platform and where possible will be combined to appear as part of the degree specialisation. This is not always possible for both technological or pedagogic reasons.
- However, you are expected to review and undertake all additional degree content. This includes joining live events/webinars and completing all summative assessments as this will be additional content and new for you, and compulsory to complete the degree programme.

If I have taken several statistics courses in the past, is there a way to be considered to not take statistics 1 again for example?

- At present, this is not possible and all students who enrol for 2021/22 will need to undertake the degree programme they are enrolled upon and complete all required specialisations.



## Post-acceptance



Welcome  
About the programme  
FAQs

### Post-acceptance

- › Your offer of study
- › Your enrolment
- › Your communication
- › Your induction courses
- › Your pre-programme reading

Next steps

# Post-acceptance

## Your offer of study

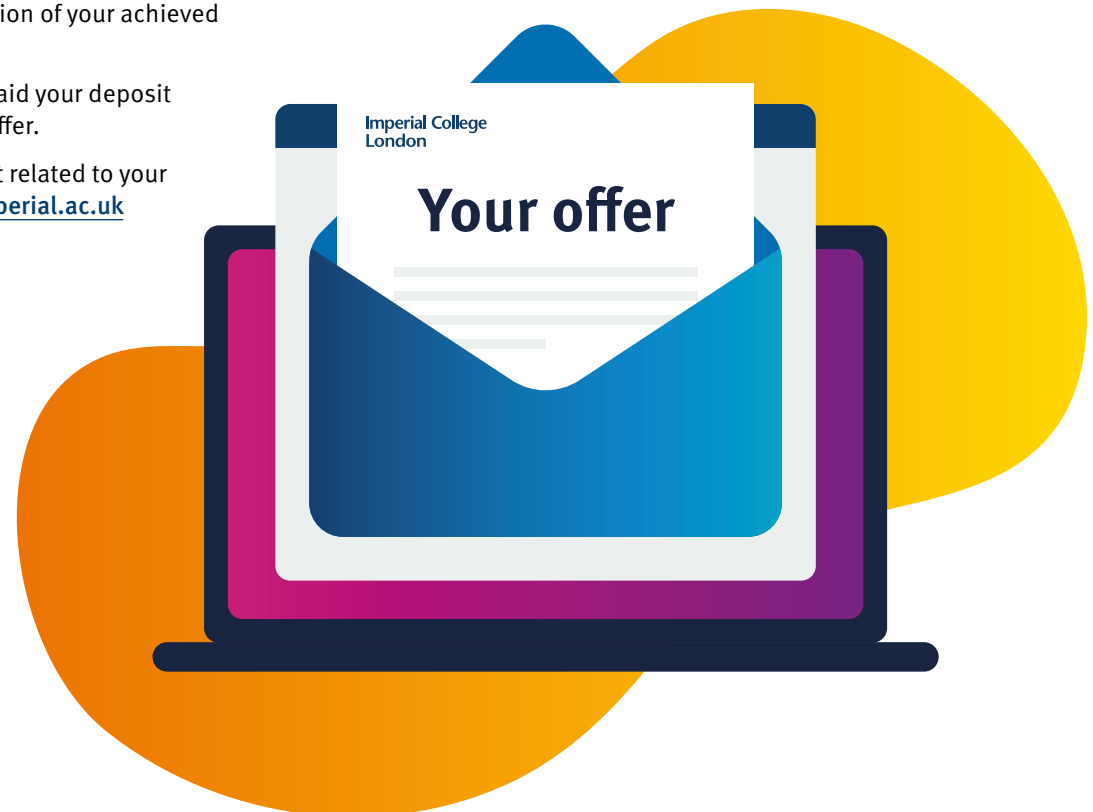
If you have been made an offer to study on the programme, congratulations!

A reminder that if you have any outstanding conditions as part of your offer of study, you will need to meet these prior to enrolment.

For example, conditions might include the need to meet the English language requirements and/or to confirm and submit evidence of your test results, or submission of your achieved qualification results.

Please note you will also need to have paid your deposit in order to meet the conditions of your offer.

If you have any queries about any aspect related to your offer, please contact [gmph-queries@imperial.ac.uk](mailto:gmph-queries@imperial.ac.uk)



## Post-acceptance



Welcome  
About the programme  
FAQs

### Post-acceptance

- › Your offer of study
- › **Your enrolment**
- › Your communication
- › Your induction courses
- › Your pre-programme reading

Next steps

## Your enrolment

If you have been made an offer and have met all of the conditions of your offer, you will receive an enrolment email/request directly from Imperial College via the email address linked to your Imperial College application with instructions to **enrol online from beginning of September 2021**.

Please follow the steps and complete the enrolment/registration process as soon as possible. Failure to enrol and formally register will impact on your student status and access to the Coursera learning platform. Please note you will not get access to the Induction course via Coursera until you have completed enrolment with Imperial College first.

Please follow Part A and Part B outlined as next steps.



### Imperial College Enrolment – Part A

#### Watch our enrolment video

You can watch the Imperial College [enrolment overview video](#) which you might find useful.

#### Check your personal email

You will receive an enrolment email from Imperial College via the email address linked to your Imperial College application with instructions to enrol online, as below.

#### Activate college account

If you hold an unconditional firm offer you will be asked to activate your college account and enrol 30 days before the programme start date.

Once you have completed online enrolment you will be assigned a student CID number and an Imperial College email address and account.

Please check how to [active your College account](#).

You can access your [Imperial Student Portal](#) here.

More information about My Imperial Student Portal is available in this [video](#).

#### Complete the registration process ASAP

Once you receive your enrolment email, as above, follow the instructions as soon as possible. Failure to register will impact on your student status and access to the Coursera learning platform.

#### If you need support (Imperial College)

If you have any problems accessing My Imperial or you have forgotten your password, please contact the College Registry Systems Team at [registry.systems@imperial.ac.uk](mailto:registry.systems@imperial.ac.uk) with your CID (College identifier) and a description of the problem. When contacting Registry Team, please CC [gmp-h-queries@imperial.ac.uk](mailto:gmp-h-queries@imperial.ac.uk) so we are aware of any issues you are experiencing.

## Post-acceptance



Welcome  
About the programme  
FAQs

### Post-acceptance

- › Your offer of study
- › **Your enrolment**
- › Your communication
- › Your induction courses
- › Your pre-programme reading

Next steps

### Coursera Enrolment – Part B

#### Check your Imperial College email

Once you have completed the steps under Part A above, and have successfully activated your account, you will receive an invitation directly to your Imperial College email account to follow Coursera joining instructions. If you have not received the invitation email, please check your spam inbox.

You will receive these instructions within 48 hours of completing Imperial College enrolment, as above.

Please activate your Coursera account as soon as possible.

#### Activate coursera account with your Imperial College email

It is important that your Coursera account and log in uses your Imperial College email account for single-sign on and degree enrolment purposes.

IMPORTANT: [Coursera Honor Policy](#) stipulates students cannot have multiple Coursera accounts. If you have an existing Coursera account, you will need to link your account and update your primary email to be your Imperial College email address.

If you accidentally create a duplicate account, Coursera support agents can help merge the accounts.

#### Access your Coursera induction course

Once you have completed the steps above to activate a Coursera account, you will have access to the School of Public Health Induction course and your programme induction course on the Coursera platform.

#### Complete your induction course

You will have access to the induction courses once you have followed the steps listed above.

Your induction courses aim to set you up for success and we recommend you work your way through the resources ahead of the start of the programme, during September.

#### If you need support (Coursera)

if you have any problems accessing Coursera or you have forgotten your password, please contact the dedicated Programme Support Team email address: [gmph-support@imperial.ac.uk](mailto:gmph-support@imperial.ac.uk) using your Imperial email account and quoting your CID (College identifier).





## Post-acceptance



Welcome  
About the programme  
FAQs

### Post-acceptance

- › Your offer of study
- › Your enrolment
- › **Your communication**
- › **Your induction courses**
- › Your pre-programme reading

Next steps

## Your communication

Please note that once you have enrolled, you are officially an Imperial College student and your Coursera log in and all degree related activity will use your Imperial College email address and account details.

This includes any email communication to and from the GMPH Programme Support Team – **please do not use any other email accounts** i.e. gmail, outlook or Hotmail etc.

Once you enrol, all Imperial College and programme level communications will be sent to your Imperial College student email address. We recommend you check this daily.

**IMPORTANT: Do not opt out from Coursera notifications as by doing so you will not be receiving programme level communication.**



## Your induction courses

Once you have successfully enrolled with Imperial College and your Coursera account is active, as above, you will have access to your Induction Courses via Coursera within a couple of days (if you have successfully completed all the required steps).

There will be a School of Public Health and programme level induction Course available for you to review and work through once you have access to this and prior to teaching which starts on Monday 27th September 2021.

We ask that you work through these courses at your own pace but that you finish the course in advance of 27th September. This will put you in the best position to start your journey on the programme.

Please note, the induction courses will continue to be available for you to access throughout the duration of the programme.

### Your live induction webinars

As part of your induction to the programme, you will have the opportunity to take part in a Live Induction Webinar Events:

1. The live Induction event will take place in September (exact date will be confirmed in late Summer) for approximately 1 hour via Zoom.

This is not a compulsory event but is an opportunity for you to meet the Programme Directors, Professor Helen Ward and Professor Paul Aylin, plus the Programme Support Team and also meet your fellow students and peers.

2. Term 1 electives webinar
3. Tutoring system webinar

The Zoom links and invites will be communicated to all students as part of the induction course and as live events but we recommend you hold those dates/times in your diary now.

If you are not able to join the webinars, they will be recorded and available for you to view via the Induction Course at a time convenient for you.

## Post-acceptance



Welcome  
About the programme  
FAQs

### Post-acceptance

- > Your offer of study
- > Your enrolment
- > Your communication
- > Your induction courses
- > **Your pre-programme reading**

Next steps

## Your pre-programme reading

Before starting the programme, you may want to start exploring some core public health readings.

This is intended as a non-exhaustive list of texts to give you a flavour of Global Health thinking and methods should you choose to read a text or two over the summer in preparation for the start of the programme.

**All texts are available in the libraries at Imperial College however we recommend that you at least obtain your own copy of the Oxford Handbook of Public Health Practice (Guest et al).**

**These core text books will likely be referred to throughout your programme and may be useful to explore:**

**EITHER: Kirkwood B and Sterne J (2003) Essential Medical Statistics (2nd ed). Blackwell Science Ltd.**

Written in an engaging style and with clarity of expression, excellent standard text book on Statistical concepts and methods of analysis (around £40 new).

**OR: Bland M (2015) An Introduction to Medical Statistics (4th ed). Oxford University Press.**

An alternative excellent standard text book. This includes multiple choice and other questions at the end of chapters, which may be useful for revision purposes (around £25). The following page gives [additional resources](#).

**Guest C, Ricciardi W, Kawachi I, Lang I (Eds) (2013). Oxford Handbook of Public Health Practice (3rd Edition). Oxford University Press, Oxford UK. (Amazon price new £31.49).**

This is the core text for the course and comprises brief chapters relating to all aspects of public health.

**Ward H, Toledano M, Shaddick G, Davies B, Elliott P (2012) Oxford Handbook of Epidemiology for Clinicians. Oxford University Press, Oxford UK. (Amazon price £29.99).**

**Bottle, Alex, and Paul Aylin. Statistical methods for healthcare performance monitoring. CRC Press, 2016.**

**Social Sciences intro to Global Health:**

**Farmer P., Kim Y.J., Kleinman A.M, Basilio M. Reimagining Global Health: An introduction. University of California Press. 2013.**

This book uses case studies to bring together ethnographic, theoretical, historical and clinical perspectives on key global health issues.

**Marmot M. The Health Gap: The Challenge of an Unequal World. Bloomsbury. 2015.**

This book takes a detailed look at the social determinants of health within and between geographical areas, linking them to a huge array of evidence on public health outcomes.

**The Ghost Map: The Story of London's Most Terrifying Epidemic — and How It Changed Science, Cities, and the Modern World. 2007.**

This book takes a multidisciplinary approach exploring intertwined histories of the spread of disease, the rise of cities, and the nature of scientific inquiry. It offers both a fascinating history and explanation of how it has shaped the world we live in.

**Wilkinson, Richard, and Kate Pickett. The spirit level: Why equality is better for everyone. Penguin UK, 2010.**

This groundbreaking book, based on years of research, provides hard evidence to show: how almost everything – from life expectancy to mental illness, violence to illiteracy – is affected not by how wealthy a society is, but how equal it is; that societies with a bigger gap between rich and poor are bad for everyone in them – including the well-off; and how we can find positive solutions and move towards a happier, fairer future.

## Post-acceptance



Welcome  
About the programme  
FAQs

### Post-acceptance

- › Your offer of study
- › Your enrolment
- › Your communication
- › Your induction courses
- › **Your pre-programme reading**

Next steps

### Intro to Global Development

**Willis K. Theories and Practices of Development. 2nd Edition. Routledge. 2011.**

This book introduces the complex debates around how development has been understood and achieved. It deals with the evolution of development ideas and policies focusing on economic, political, social, environmental and spatial dimensions.

### Pop academic “beach reading”

**Rosling, H et al. Factfulness: Ten Reasons We’re Wrong About the World — and Why Things Are Better Than You Think. Sceptre. 2018.**

This recent popular non-fiction written by the late Hans Roslin, a celebrated Global Health data guru famous for his engaging TED talks, illustrates that while progress is clearly still needed, in overall, well-being indicators in the world have been steadily improving. The book provides clear, useful advice on how to overcome our innate biases and see the world more “factfully.”

**Goldacre, B. Bad science: quacks, hacks, and big pharma flacks. Toronto, Emblem. 2011.**

This book lifts the lid on quack doctors, flaky statistics, scaremongering journalists and evil pharmaceutical corporations. Dr. Ben Goldacre’s column in the Guardian takes on dodgy medical data. This book takes this work further, exploring: MMR hoax and misleading cosmetics ads, acupuncture and homeopathy, vitamins and mankind’s vexed relationship with all manner of ‘toxins’ among other interesting and timely topics.

**Roth, Philip. Nemesis. Random House. 2010.**

This book is a work of fiction set in the summer of 1944 that tells of a polio epidemic and its effects on a closely-knit Newark community and its children.

A selection of articles showcasing Global Health themes and methodologies

**Taylor S. ‘Global health’: meaning what? BMJ Glob Health. 2018**

**Turshen. M. A global partnership for development and other unfulfilled promises of the millennium project. 2014. Third World Quarterly. 35:3, 345-357**

**Read, U.M, Adiibokah, E and Nyame, S. Local suffering and the global discourse of mental health and human rights: An ethnographic study of responses to mental illness in rural Ghana. Globalization and Health. 2009. 5:13.**

**Walt, G. Globalization and health. Medicine, Conflict and Survival. 2001. 17:1, 63-70.**

**Garrett L (2013) – Existential Challenges to Global Health – [http://cic.nyu.edu/sites/default/files/garrett\\_challenges\\_global\\_health.pdf](http://cic.nyu.edu/sites/default/files/garrett_challenges_global_health.pdf)**

**Beaglehole R, Bonita R. What is global health? Global Health Action. 2010;3. Epub 2010/04/14. doi: 10.3402/gha.v3i0.5142**

**Koplan JP, Bond TC, Merson MH, Reddy KS, Rodriguez MH, Sewankambo NK, et al. Towards a common definition of global health. The Lancet. 2009;373(9679):1993-5. (accessible through electronic library access)**



## Next steps

### Next steps

If you have any questions, please get in contact with us via [gmph-queries@imperial.ac.uk](mailto:gmph-queries@imperial.ac.uk).

Look out for any and all emails from Imperial College as part of the admissions and online enrolment processes in advance of September.

**We look forward to meeting you very soon  
and for your GMPH journey to begin!**

