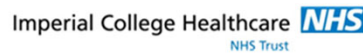
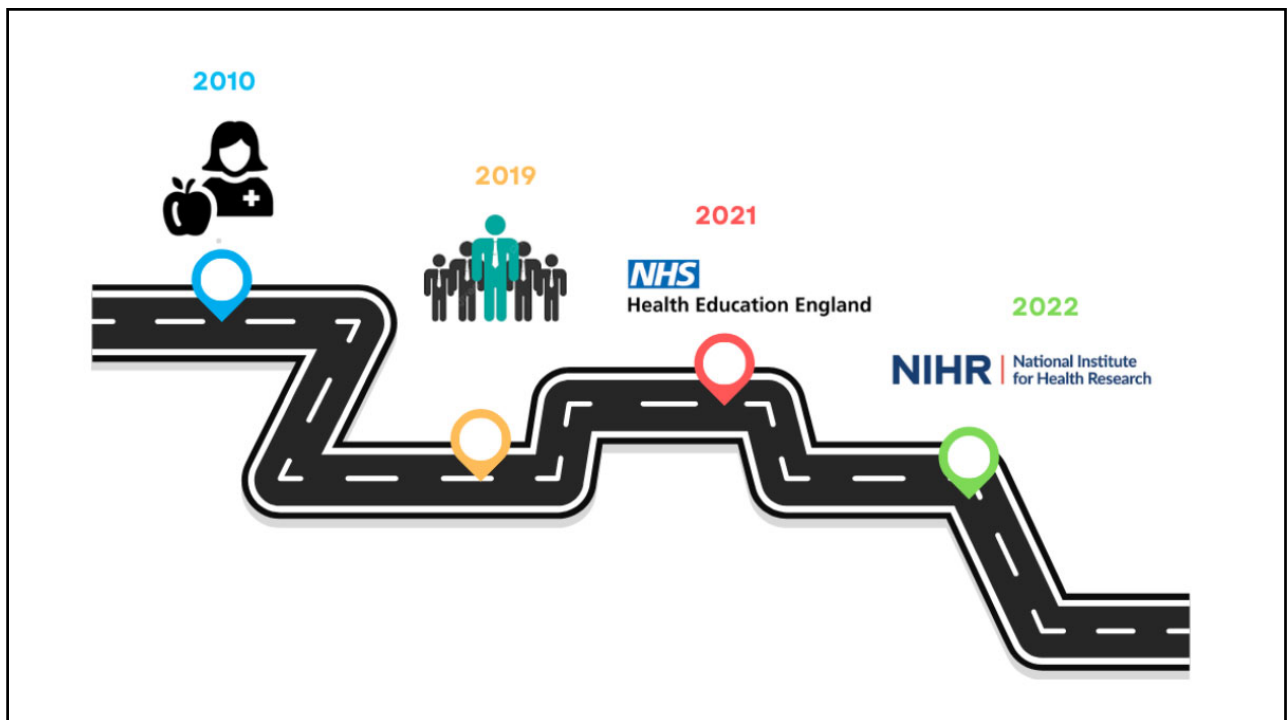


My journey

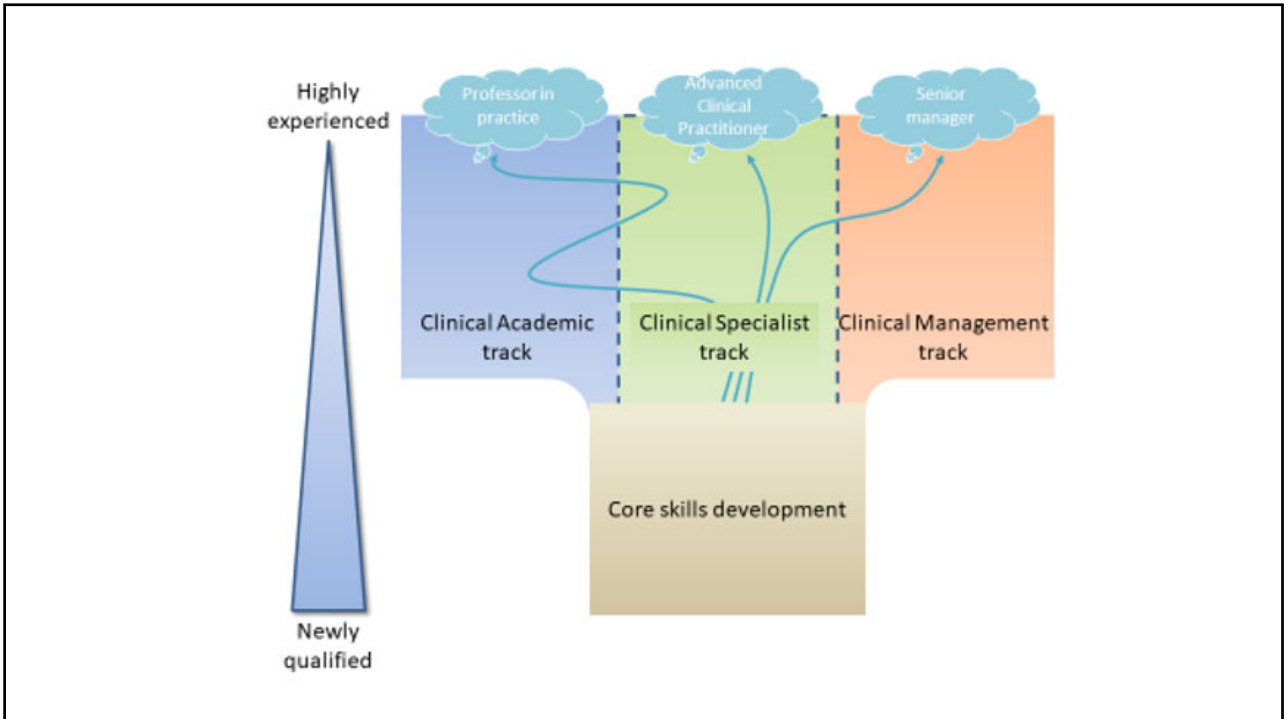
Kelly Wade-Mcbane
HEE/NIHR Pre-doctoral Clinical and Practitioner Academic Fellow
k.wade-mcbane@nhs.net



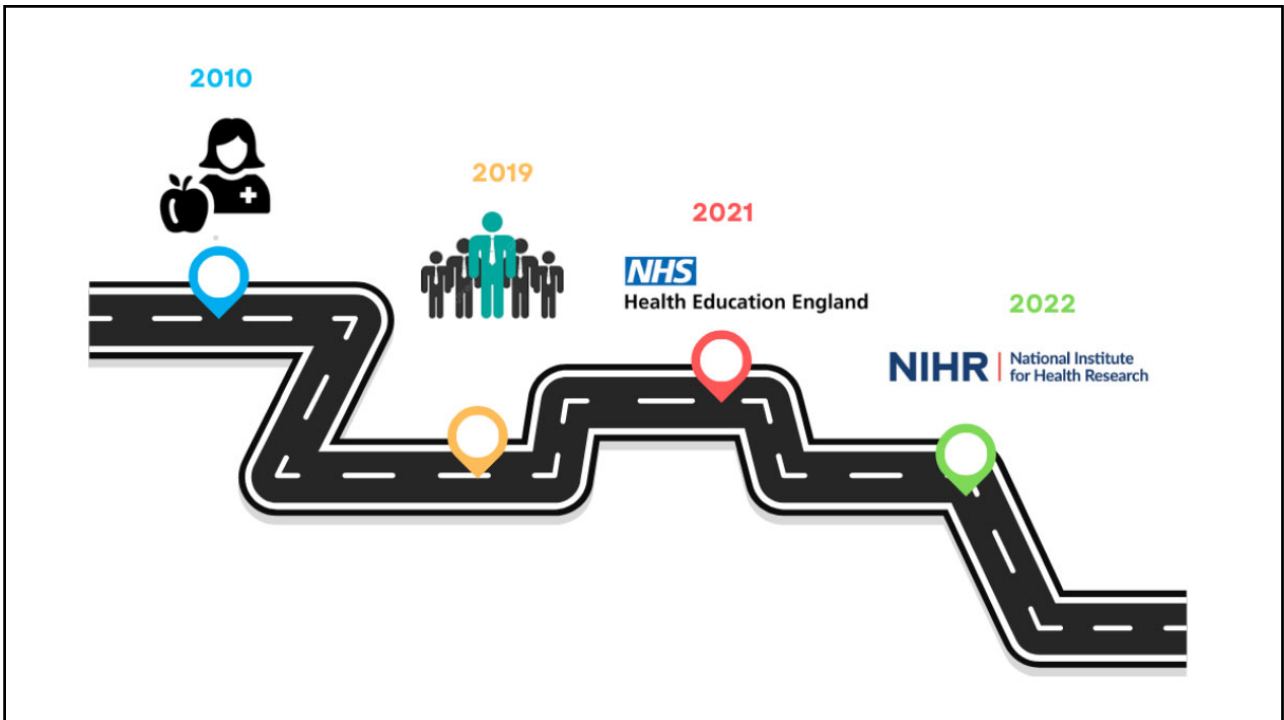
1



2



3



4

KEY OUTPUTS

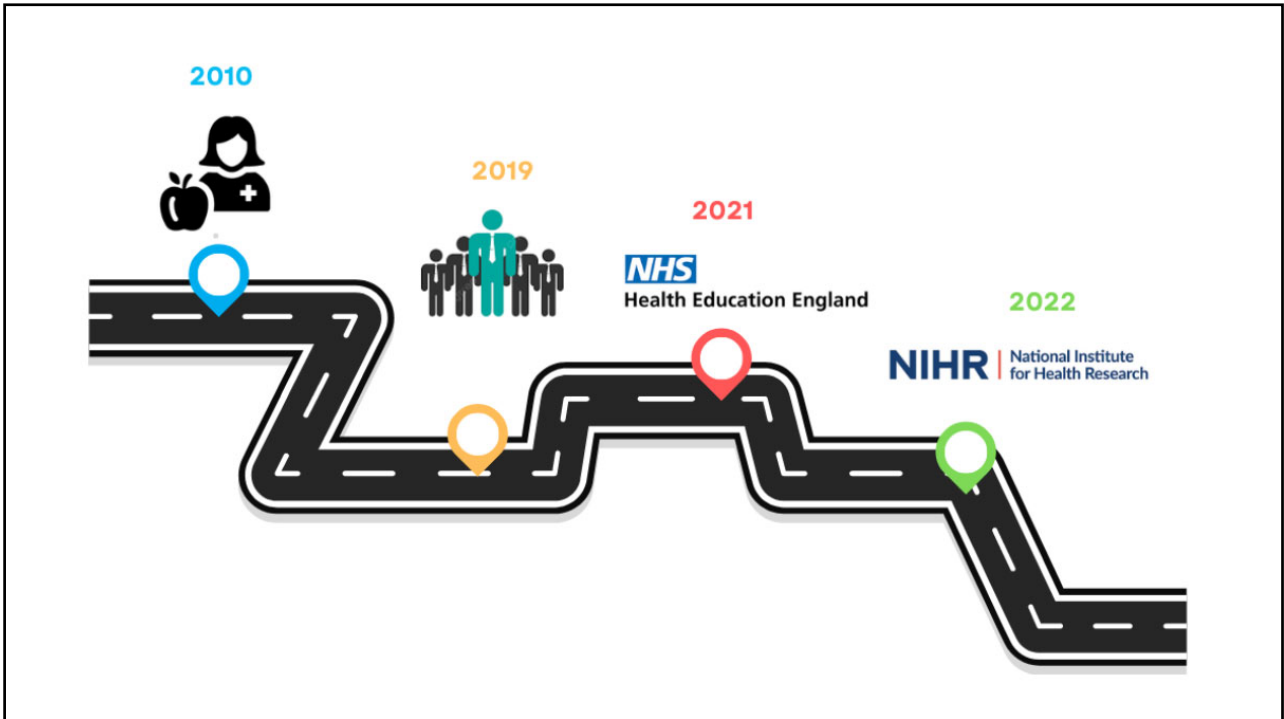
- To propose a sustainable prehabilitation model for non-surgical cancer patients being treated at ICHNT
- To complete a service evaluation including a cost-benefit analysis for the model which could be used to support business cases
- To develop an AHP skills and competency framework for non-surgical cancer prehab
- To submit an article for publication

5

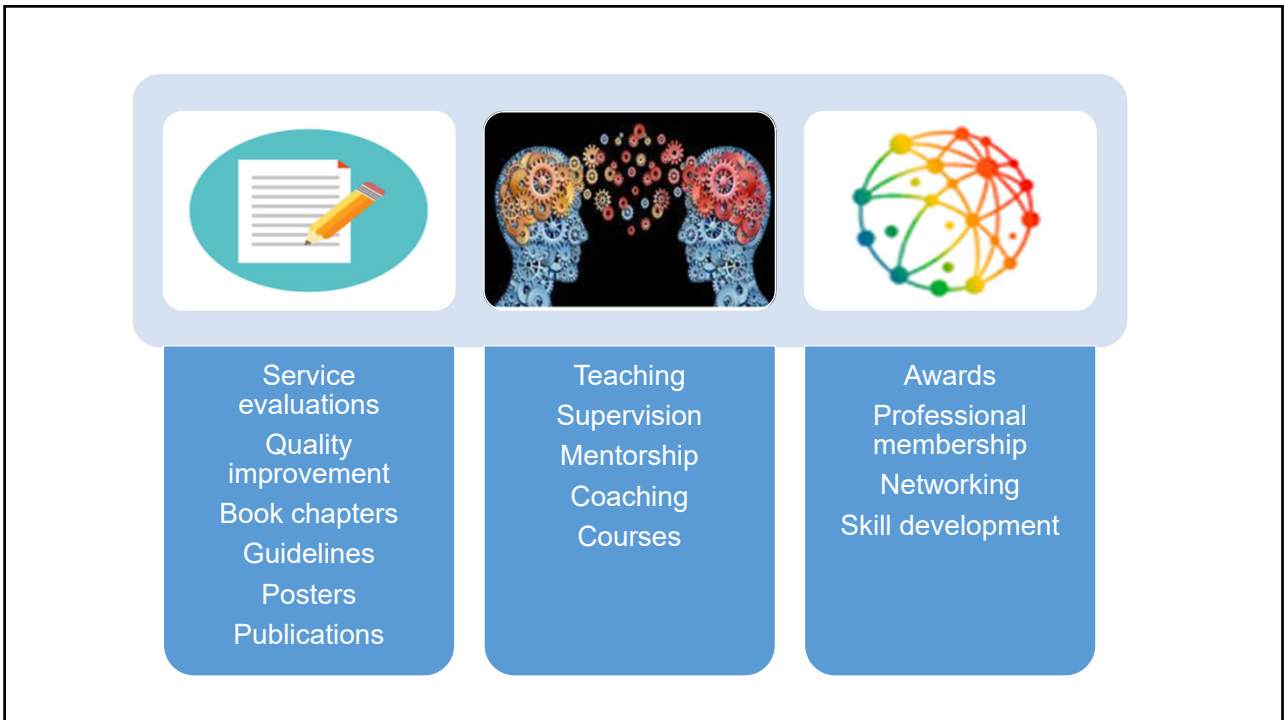
PERSON SPECIFICATION

- Experience in working with patients with a cancer diagnosis
- Ability to independently maintain a clinical caseload
- Ability to work in an unpredictable and changing environment
- Ability to manage own time effectively, meet deadlines and prioritise competing demands
- Experience of successfully planning, managing, delivering service improvement
- Good knowledge of MS Office applications
- Skilled communicator
- Provide and receive sensitive information to a wide range of differing groups, anticipating and addressing barriers to communication
- Good collaborator
- Ability to analyse and problem solve complex clinical and non-clinical issues

6



7



8

Imperial College
Academic Health
Science Centre
Improving Patient Care

Clinical Research Training Framework

2nd Edition

Approved by Imperial College Academic Health Science Centre

9

The Iceberg Illusion

Success is an iceberg

SUCCESS!

WHAT PEOPLE SEE

WHAT PEOPLE DON'T SEE

Persistence

Failure

FAIL

Sacrifice

THINGS I HAVE TO GIVE UP

1. _____

2. _____

3. _____

Disappointment

Dedication

GOAL

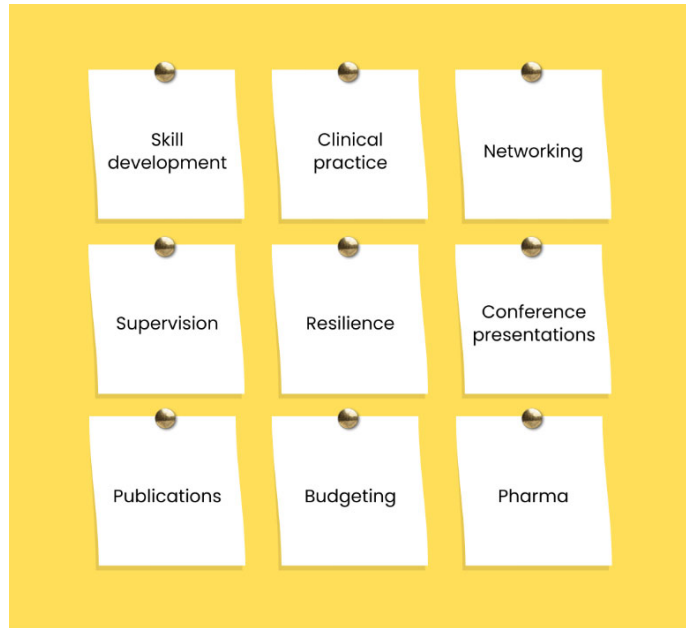
Hard work

Good habits

@sylviaaduckworth

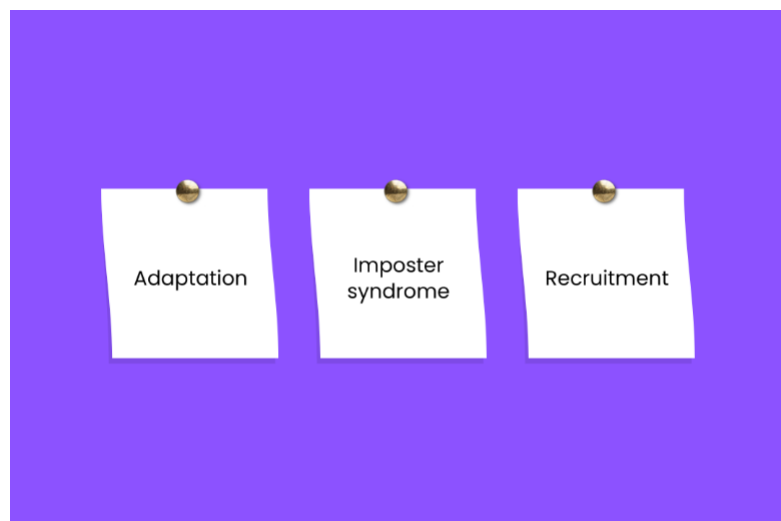
10

Personal reflections

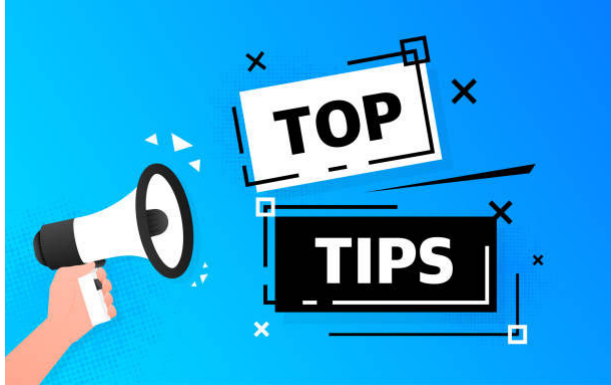


11

Personal reflections



12



- Do it!
- It's not all about publications
- Start early
- Speak to colleagues
- Supervisory support is key
- Develop your skills – use the research training framework and attend library workshops

13



14

Thank you for listening

Any questions

