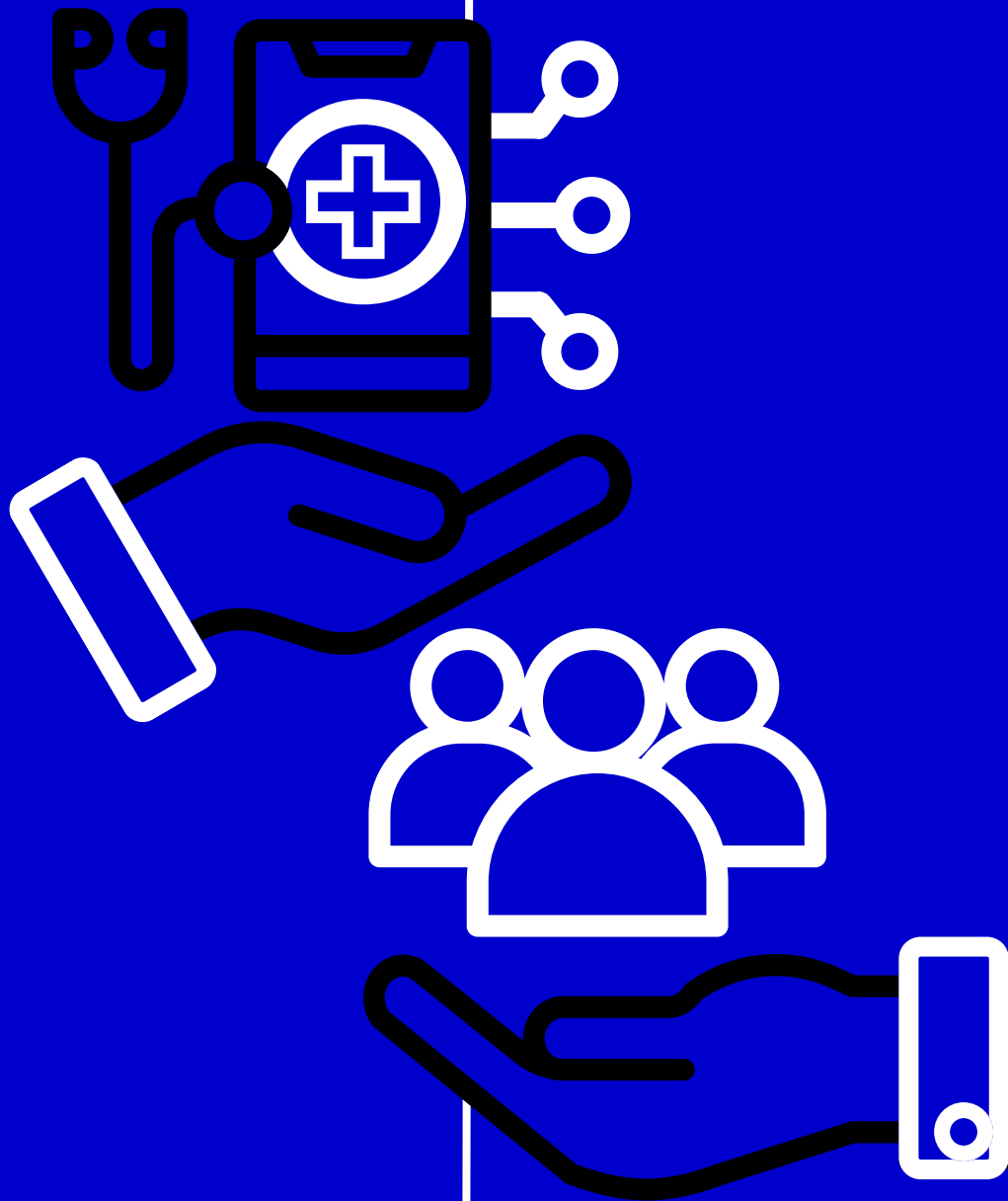

**IS MEDTECH
ONE RIGHT FOR
YOU?**



**MT1
COLLABORATIVE**





IS MEDTECH ONE RIGHT FOR YOU?

Who we are and what we do:

- MedTechOne brings together resources and programmes for all MedTech innovators at Imperial college.
- We run funding competitions for MedTech innovations with great translational potential and networking events for Medtech innovators.
- We have expertise in clinical and regulatory strategy, project management, project design and development of devices.



MEDTECH ONE STREAMS



Accelerator

For teams who would like to increase their technology readiness level and attract funding and support with QMS and commercialisation.



Foundation

For students or early career researchers interested in MedTech as well as specialised training and resources.



Collaborative

For clinical academics looking for support on the translation pathway of their MedTech innovation (or software), or for support or advice on the clinical and spinout pathways for their MedTech. We also offer support for funding and ethics applications, and for project execution.



MEDTECH ONE COLLABORATIVE

The Collaborative branch of MedTechONE specifically works with projects taking place at Imperial.

This includes coordinating national evaluations of our technologies within wider clinical trials, as well as accepting incoming devices into our medical technologies programme for support at all stages of translation, from first-in-human to early adoption.

We also run events such as the MedTech Links series to bring innovators together with clinicians, researchers, and industry partners.

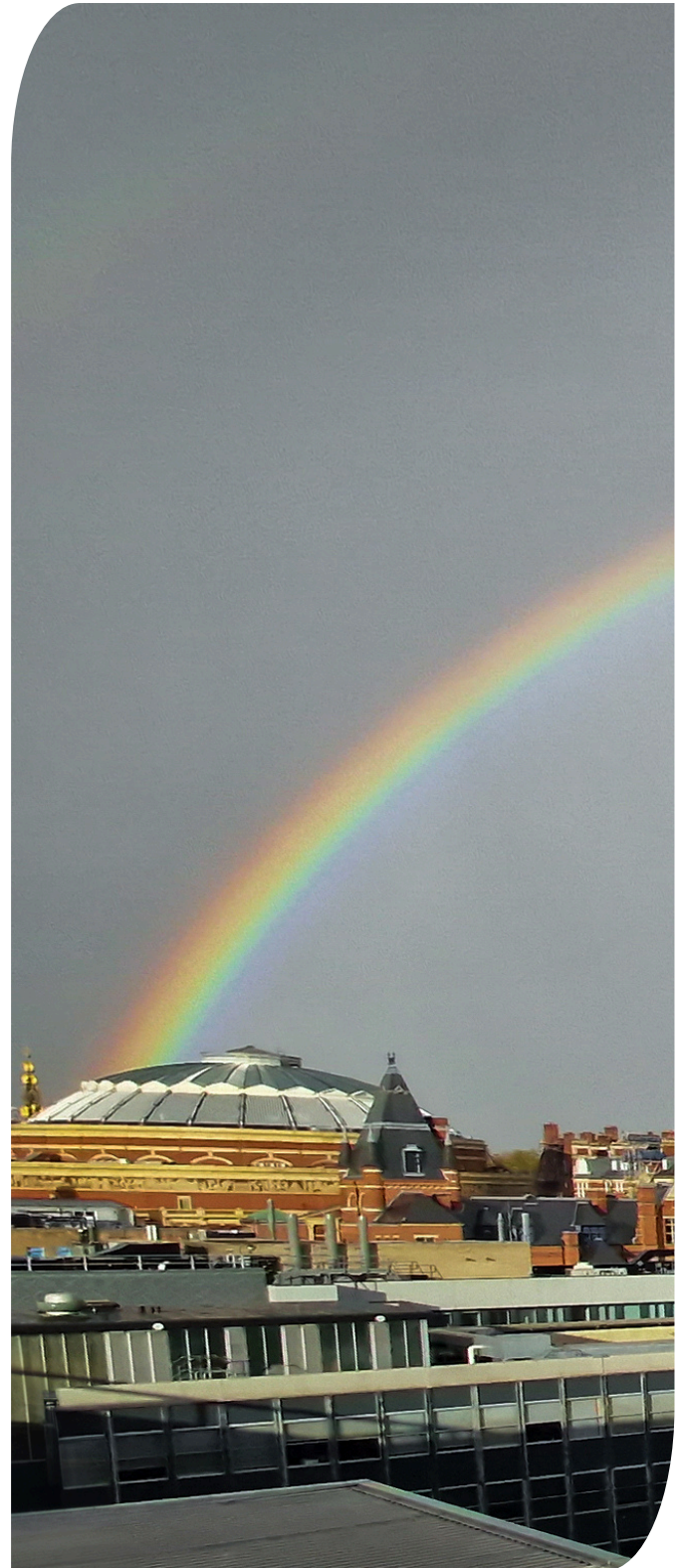
Check out our website for a link to our “Contact Us” form if you need project support



MEDTECH ONE COLLABORATIVE

How we can support projects

- Assistance with trials setup and management
- Co-ordinating evaluations of technologies in wider clinical trials
- Guidance for proof of concept
- Clinical trials support (REC through to study management/documentation support)
- Signposting to appropriate funding and calls/ who to talk to about spinouts
- Directing researchers to existing support
- Communication/ dissemination of results
- Adoption of new medical devices within the ICNHS Trust and beyond



CONTACTS



<https://www.imperial.ac.uk/medtechone/>



mt1-info@imperial.ac.uk



[LinkedIn@MedTechONE](#)

