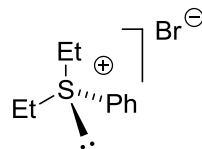
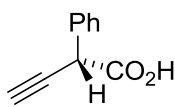
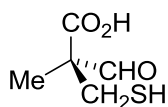


Stereochemistry 2011-2012 EXAM-STYLE QUESTION

NB. 'Half a question' (out of 12.5 marks)

Answer part (a) and **EITHER** part (b) **OR** part (c) of this question.

- (a) Assign (*R*) or (*S*) absolute stereochemical descriptors to all stereogenic centres in the following three molecules. Show your working.

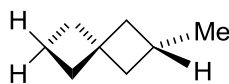


(6.5 marks)

- (b) Only one of the following molecules has an asymmetric enantiomeric form. Draw this enantiomer.



A



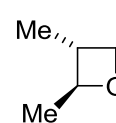
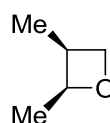
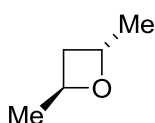
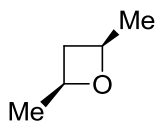
B



C

(6 marks)

- (c) Only one of the following molecules is a *meso* compound. Which is it and why?



(6 marks)