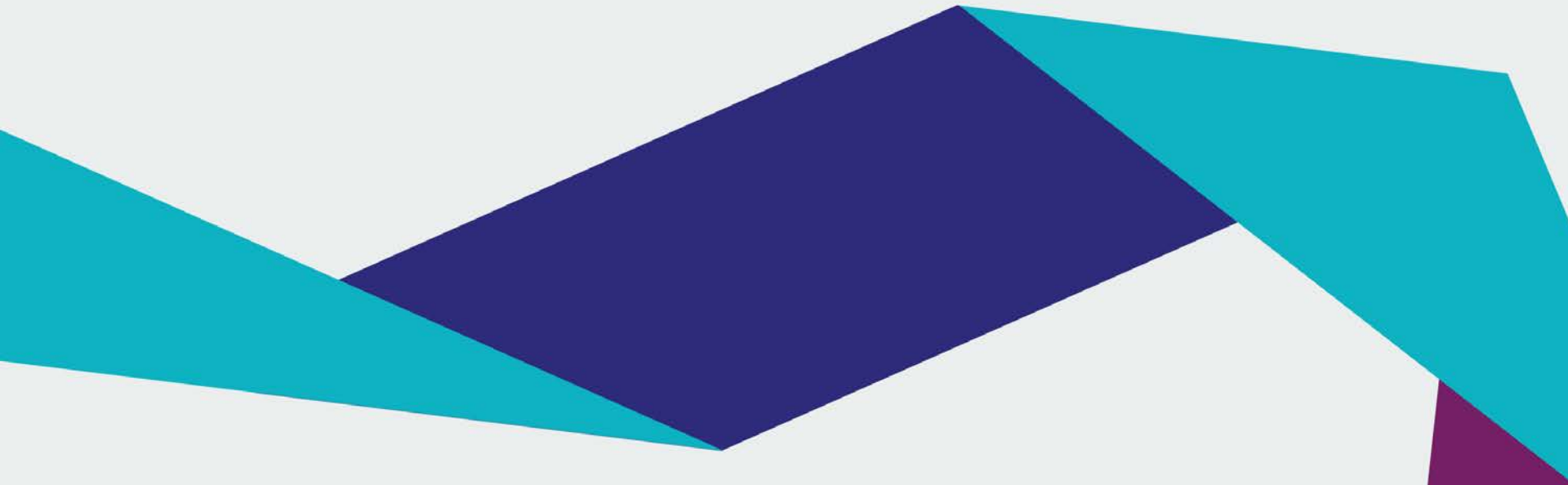


How to self-enrol

Introduction to Supervising PhD Students:

A course for main and co-supervisors



Log in to Blackboard Learn: <http://bb.imperial.ac.uk>

Imperial College London

Blackboard learn⁺

USERNAME

PASSWORD

[Forgotten Your Password?](#)

Blackboard maintenance 1-3am Wednesdays
We will be carrying out essential maintenance work on Blackboard every Wednesday from 1-3am. The system will not be available during this time.
Apologies for any inconvenience this may cause.


About this image...

Data Protection Act 1998:
Students are reminded that their use of the Blackboard learning environment will be logged and that this information, with other personal data about them contained within the system, will be used by their tutors to monitor their academic progress.

Blackboard at Risk
The Blackboard service at risk period is Wednesdays 16:00-18:00
[What's this?](#)

Imperial E-learning Links
[ICT E-learning Web Pages](#)
[ICT Service Desk](#)
[ICT Service Status Page](#)

Useful Blackboard Links
[ICT Blackboard Help Pages](#)


© 1997-2017 Blackboard Inc. All Rights Reserved. US Patent No. 7,493,396 and 7,558,853. Additional Patents Pending.
[Accessibility information](#) - [Installation details](#)

My Announcements

No Institution Announcements have been posted in the last 7 days.

- CE3-06 Environmental Engineering
- > Env Eng lectures 5 and 6

more announcements...>

My Calendar

No calendar events have been posted for the next 7 days.

more calendar events...>

My Courses

Courses where you are: Student

CE0-00 General Student Resources

CE0-10 Risk Assessment Foundation Training - Chemical Engineering

CE0-EL Electives Information

CE0-SS Safety Information

CE1-01 Chemical Engineering Mastery 1

CE1-03-2 Foundation Laboratory

CE2-03-3 Knowledge Laboratory

CE3-00 Third Year Student Resources

CE3-03-3 Particle Engineering

CE3-06 Environmental Engineering

Announcements:

> Env Eng lectures 5 and 6

CE3-07-5 Discovery Laboratory

CE3-SBG Shell Business Game

CE4-01-2 Final Year Plant Design Project

CE4-06A Advanced Process Optimisation I

CE4-22 Downstream Separation in Biotechnology

CE4-29 Nuclear Thermal Hydraulics

NQ0-007 Maths Mastery

Click on the **Courses** link in the top right corner

On your Home Screen, you will see the courses that you are already enrolled on in the **My Courses** list

Mobile Learning Update

Read, create, and comment on Discussion threads from your phone with the Blackboard app

Study Group (Wed 9pm-12am)

After looking at Homework 1 I think that forming a study group could be quite beneficial to improving...



CE8 courses

Course List

i You currently have no courses.

Course Search

Course Catalogue

- Administrative Services
- Cross-College
- Faculty of Engineering
- Faculty of Medicine
- Faculty of Natural Sciences
- Imperial College Business School

[Browse Course Catalogue](#)

Organisation Catalogue

- Cross-college
- Faculty of Medicine

[Browse Organisation Catalogue](#)

My Courses

In the course search box, type:

Course title: **Introduction to Supervising PhD Students**

If you are the main or co-supervisor, please choose the following course:

Introduction to Supervising PhD Students – A course for main and co-supervisors (all academic years)

Course Catalogue

Browse Course Catalogue

Search Catalogue Course ID Contains GS_I_S_PHD_S AND Creation Date Before 19/09/2017 Go

Browse Categories

Select a category to see only courses belonging to that category

--unspecified category-- Go

Browse Terms

Select a term to see only courses belonging to that term

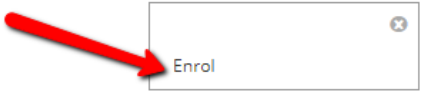
--unspecified term-- Go

COURSE ID 	COURSE NAME
COURSE_GS_I_S_PHD_S	Introduction to Supervising PhD Students

Once you have found your course, hover your mouse pointer over the **Course ID** to make the right-hand contextual menu icon appear.

Open up the contextual menu by clicking on this icon.

Click on Enrol.



Self-Enrolment

You will get a first confirmation screen.
Click on **Submit**.

ENROL IN COURSE: INTRODUCTION TO SUPERVISING PHD STUDENTS (COURSE_GS_I_S_PHD_S)

Instructor: Laura Lane
Description:
Categories: Education:Higher Education

Click **Submit** to proceed. Click **Cancel** to go back.

Cancel Submit





Valentina Cattane 29



Imperial College
London

My Blackboard

Courses

Introduction to Supervising PhD Students



Self-Enrolment



Self-Enrolment

Action Successful:Success: Enrolment in **Introduction to Supervising PhD Students (COURSE_GS_1_S_PHD_S)** as vcattane processed. Click **OK** to continue.
Monday, 18 September 2017 16:13:34 o'clock BST

You will then get a second confirmation screen with details of your enrolment.

Click on **OK**.

This will send you to the home page of the course you have just enrolled on.



← OK



Note: Self-enrolment will only allow you to enrol as a **STUDENT**

If you need further support, contact the Graduate School at

gs.digitallearning@imperial.ac.uk

