

ori P

LP

LP

LP

LP

LP

terminal proteins
(LMP-2A,B)

BNRF1

EBERs

BCRF1

BWRF1

BWRF1

BWRF1

BWRF1

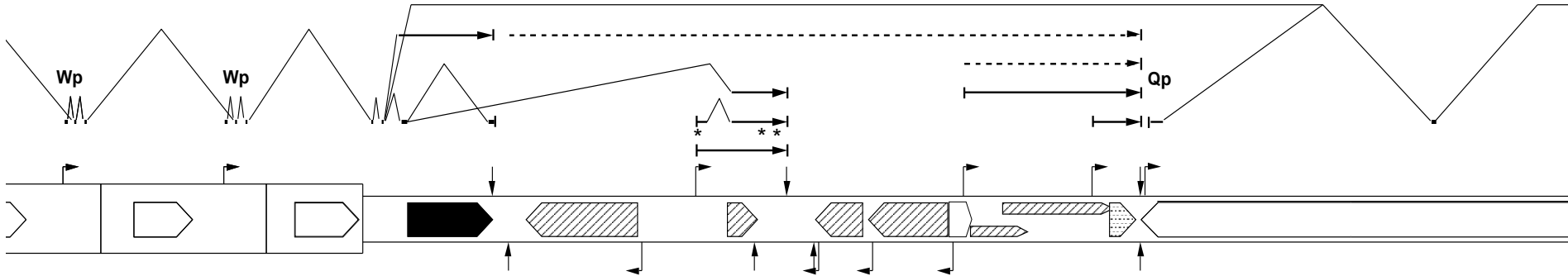
BWRF1

BWRF1

tegument
FGARAT

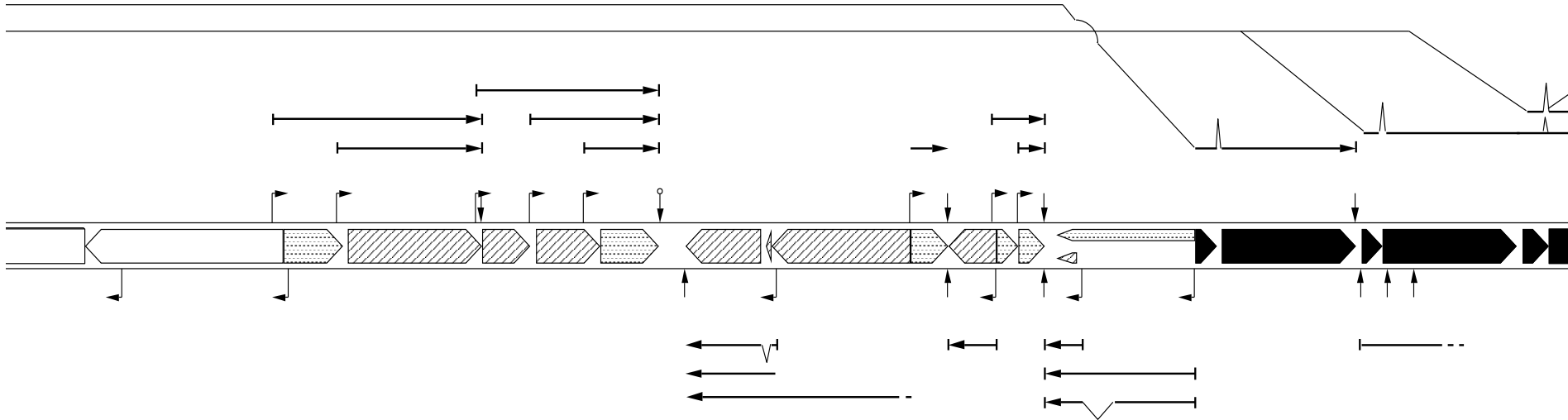
vIL-10

29 30 31 32 33 34 35 36 37 38 39 40 41 42 43 44 45 46 47 48 49 50 51 52 53 54 55 56 57



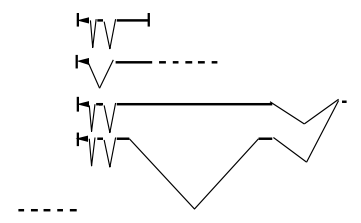
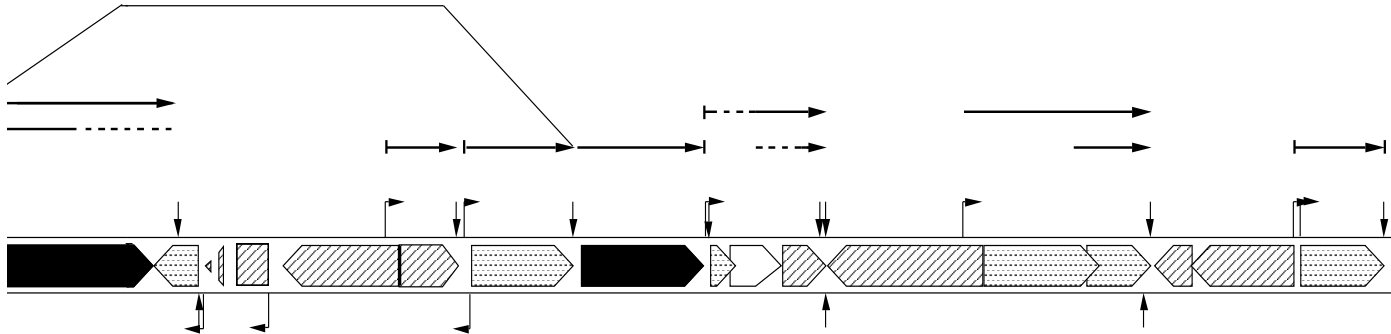
F1	BWRF1	BWRF1	BYRF1	BHLF1	BHRF1	BFLF2	BFLF1	BFRF1A BFRF1	BFRF2	BFRF3	BPLF1
			EBNA-2		bcl-2	capsid egress from nucleus		capsid docking on nuclear lamina		capsid on hexon tips	large tegument protein

58 59 60 61 62 63 64 65 66 67 68 69 70 71 72 73 74 75 76 77 78 79 80 81 82 83 84 85 86



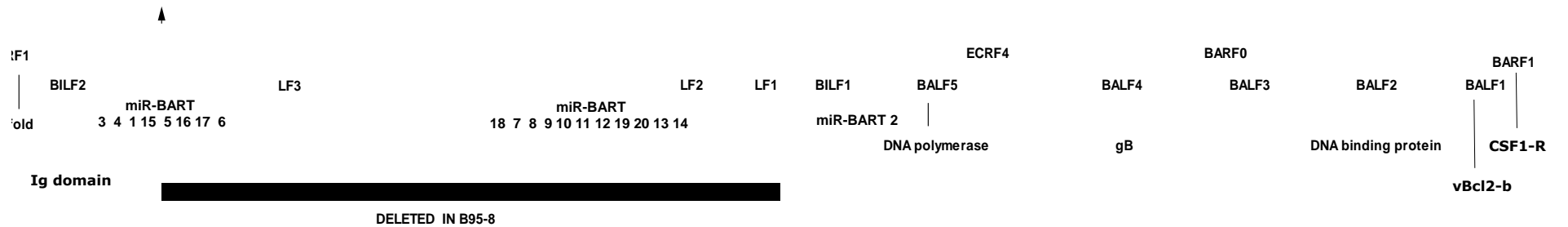
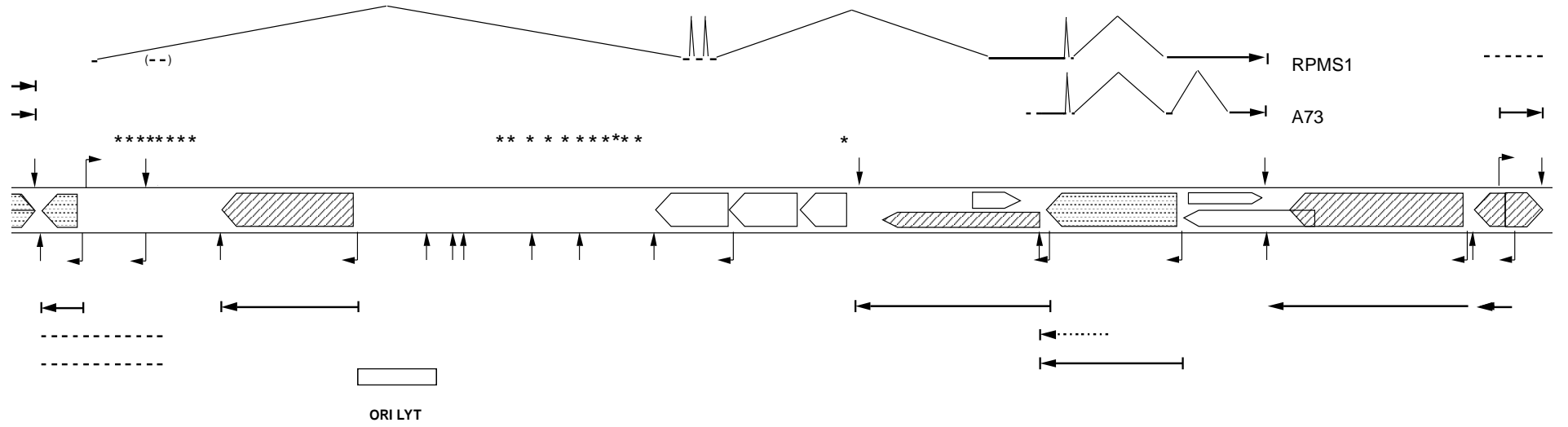
- | | | | | | | | | | | | | | | | | | | | |
|-------------------------|-------------------------------|--------------------------|-------|--------------|-------|-----------|-------|---------|-------|-------|-----------------|-------|-------------|---------|-------|---------|--------|--------|-------|
| BOLF1 | BORF1 | BORF2 | BaRF1 | BMRF1 | BMRF2 | BMLF1 | BSLF2 | BSLF1 | BSRF1 | BLLF3 | BLRF1 | BLRF2 | BLLF2 | BLLF1 | BLRF3 | BERF1 | BERF2a | BERF2b | BERF3 |
| tegument protein | capsid triplex protein | ribonucleotide reductase | | processivity | | SM | | primase | gN | | tegument | | gp350 / 220 | EBNA 3A | | EBNA 3B | | EBl | |

87 88 89 90 91 92 93 94 95 96 97 98 99 100 101 102 103 104 105 106 107 108

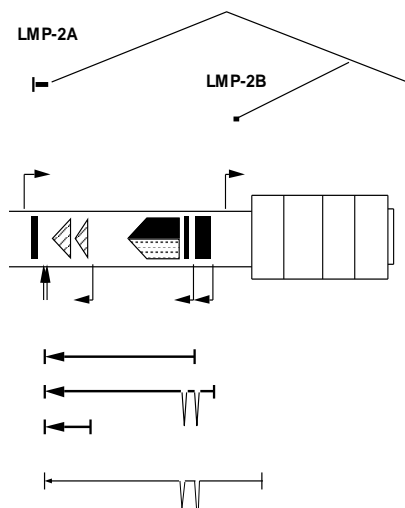


							BKRF3				BBLF3		
BERF4	BZLF2	BZLF1	BRLF1	BRRF1	BRRF2	BKRF1	BKRF2	BKRF4	BBLF4	BBRF1	BBRF2	BBLF2	BBRF3
NA 3C	gp42	immediate early transcription				EBNA-1	uracil DNA glycosylase		helicase	portal	primase assoc factor		gM
							gL			tegument			

37 138 139 140 141 142 143 144 145 146 147 148 149 150 151 152 153 154 155 156 157 158 159 160 161 162 163 164 165 166



6 167 168 169 170 171 172 173



BNLF2a,b BNLF1

reduces peptide TAP binding LMP1

Key to symbols

RNA, ends mapped accurately

RNA, ends deduced

RNA, ends not mapped

coding region of genes

latent cycle

early lytic cycle

late lytic cycle

unknown

AAUAAA poly A site

variant poly A site

transcription promoter

mi RNA